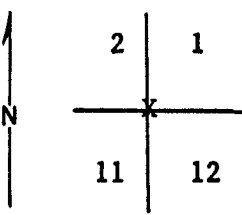


MONUMENTED

Index File No. E 21 CORNER RECORD (SEARCH) (Ref. FSM 7151.4) Tract or Survey No. _____ Cor. SW corner No. sec 1
T 2S R. 36E R.D. La Grande County Union
Merid. Will N.F. WW State Oregon

CORNER DIAGRAM



DESCRIBE CORNER MONUMENT FOUND

Mound of stone sec. tag on tree
The corner to sections 1, 2, 11, & 12 monumented with a basalt stone 24" x 14" x 7" set 10" in the ground and in a mound of stones 3' base 1 1/2' high no marks visable from which the remains of an original bearing tree

DESCRIBE BEARING TREES OR OTHER OFFICIAL ACCESSORIES FOUND

~~No trees available~~
A sawed and decayed stump 22" dia, bears N. 74° E. 178 lks. with axe marks visable (record 173 lks.)

PHOTO IDENTIFICATION DATA

Photo No. ENW 2 217
Filed At. _____
Object Ident. _____
Ident. By _____
Signature

DESCRIBE CORNER LOCATION RELATIVE TO NEAR-BY FEATURES, ALSO HOW TO REACH CORNER

Can be driven, two wheel drive vehicle/use photos

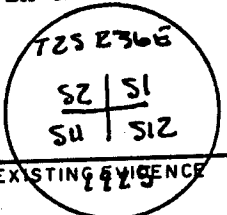
PLANE COORDINATE POSITION DATA

State _____ Zone _____
X _____
Y _____
Estab. By _____
Agency

Signature Dewey Flowers Title Engr. Division Whitman Headquarters La Grande Date 4 73 7100-52 (3/68)

CORNER RECORD (PERPETUATION)

MONUMENT: DESCRIBE NEW MONUMENT SET, OR WORK DONE TO PRESERVE EXISTING MONUMENT
At the corner point Set an iron post 28" long 2 1/2" dia. 10" in ground in a mound of stones 5' base to top marked



From which new bearing trees

ACCESSORIES : DESCRIBE NEW BT'S WITNESS OBJECTS ETC. ESTABLISHED, OR WORK DONE TO PRESERVE EXISTING

- A pine 23" dia. bears N. 58 1/2° E. 67 lks. marked T2S R36E S1 BT
 - A pine 24" dia. bears S. 49 3/4 E. 809 lks. marked T2S R36E S12 BT
 - A pine 9" dia. bears S. 15 1/4 W. 211 lks marked T2S R36E S11 BT
 - A pine 18" dia. bears N. 82 1/2° W. 442 lks. marked T2S R36E S2 BT
- Deposit corner stone along side iron post

Work Done By Garrison Title C. Surveyor Date 7/75 State Registration No. _____ or Agency _____
Certified Cor. Record Prepared? Yes No Filed At: _____ Date _____

REMARKS

Index File No. _____ T. _____ R. _____ M. _____ Tract or Surv. No. _____ Cor. _____

UNION COUNTY SURVEYOR
Date Received _____
Date Filed 12-16-87
By G. LANGLITZ, DEPUTY
File No. 178-87R

E-21

Remonumentation of Certain Original Corner Points,
T. 2 S., R. 36 E., Willamette Meridian, Oregon

CHAINS

Deposit corner stone alongside iron post.

The $\frac{1}{2}$ sec. cor. of secs. 23 and 24, determined at record bearing and distance from the original bearing trees:

A pine, 16 ins. diam., bears N. 82° W., 16 lks. dist., with scribe marks $\frac{1}{2}$ S visible on open blaze.

A pine, 30 ins. diam., bears S. 67° E., 9 lks. dist., with healed blaze.

At the corner point

Set an iron post, 28 ins. long, $2\frac{1}{2}$ ins. diam., 24 ins. in the ground, with brass cap mkd.

T 2 S R 36 E
 $\frac{1}{2}$
S 23 | S 24
1975

The cor. of secs. 1, 2, 11, and 12, monumented with a basalt stone, 24 x 14 x 7 ins., firmly set 10 ins. in the ground, and in a mound of stone, 3 ft. base, $1\frac{1}{2}$ ft. high, no marks visible, from which the remains of the original bearing tree:

A sawed and decayed pine stump, 22 ins. diam., bears N. 74° E., 178 lks. dist., with axe marks visible. (record, 173 lks.)

At the corner point

Set an iron post, 28 ins. long, $2\frac{1}{2}$ ins. diam., 10 ins. in the ground, in a mound of stone, 5 ft. base, to top, with brass cap mkd.

T 2 S R 36 E
S 2 | S 1
S 11 | S 12
1975

from which new bearing trees

A pine, 23 ins. diam., bears N. $58\frac{1}{2}^\circ$ E., 167 lks. dist., mkd. T2S R36E S1 BT.

A pine, 24 ins. diam., bears S. $49\frac{1}{2}^\circ$ E., 809 lks. dist., mkd. T2S R36E S12 BT.

A pine, 9 ins. diam., bears S. $15\frac{1}{2}^\circ$ W., 211 lks. dist., mkd. T2S R36E S11 BT.

A pine, 18 ins. diam., bears N. $82\frac{1}{2}^\circ$ W., 442 lks. dist., mkd. T2S R36E S2 BT.

Deposit corner stone alongside iron post.

The cor. of secs. 26, 27, 34, and 35, monumented with a basalt stone, 18 x 15 x 12 ins., firmly set in a mound of stone, 3 ft. base, 2 ft. high, no marks visible, from which the remains of the original bearing trees:

A burned pine stump, size indeterminate, bears S. 42° E., 23 lks. dist., no marks visible.

UNION COUNTY
SURVEYOR
Date Received 3/15/13
Date Filed 3/15/13
By [Signature]
File No. 334-2013R