

RECORD

Index File No. C-13

CORNER RECORD (SEARCH)

Tract or Survey No. \_\_\_\_\_

Cor. No. \_\_\_\_\_

T 25 R. 36E

R.D. Labrande

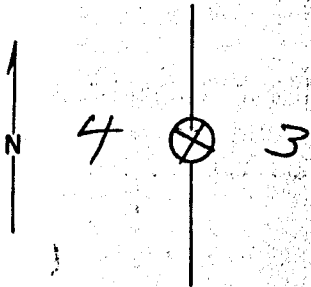
County Union

Merid. Willamette

N.F. Wallawa-Whitman

State Oregon

CORNER DIAGRAM



DESCRIBE CORNER MONUMENT FOUND

Steel fence post set by BLM 7-74

DESCRIBE BEARING TREES OR OTHER OFFICIAL ACCESSORIES FOUND

Sec. 3 - 30" D.F. Down and rotten scribe visible bears S66E 40 LKS.

PHOTO IDENTIFICATION DATA

Photo No. EWD 34-26

Filed At. \_\_\_\_\_

Object Ident. Corner

Ident. By David L. Dabstrom  
Signature

PLANE COORDINATE POSITION DATA

State \_\_\_\_\_ Zone \_\_\_\_\_

X \_\_\_\_\_

Y \_\_\_\_\_

Estab. By \_\_\_\_\_  
Agency

DESCRIBE CORNER LOCATION RELATIVE TO NEAR-BY FEATURES, ALSO HOW TO REACH CORNER

corner located approx. 100' North of old Jeep trail and just into the trees along a scab

Signature

Title

Division

Headquarters

Date

7100-52

David L. Dabstrom

CET

Labrande

6-21-75

REV. 65 5

UNION COUNTY SURVEYOR

Received \_\_\_\_\_

Dated 12-16-87

G. LAWSLITZ, DEPUTY

File No. 176-87R

C-13

Remonumentation of Certain Original Corner Points,  
T. 2 S., R. 36 E., Willamette Meridian, Oregon

CHAINS

from which new bearing trees

~~A western larch, 10 ins. diam., bears N. 28° E.,  
18 lks. dist., mkd. 1/4 S3 BT.~~

~~A western larch, 14 ins. diam., bears S. 32 3/4° W.,  
21 lks. dist., mkd. 1/4 S10 BT.~~

~~Deposit fir post remains alongside iron post.~~

The 1/4 sec. cor. of secs. 3 and 4, monumented with a  
basalt stone, 15 x 12 x 10 ins., loosely set in a mound  
of stone, mkd. 1/4 on W. face, from which the remains of  
the original bearing trees:

A root hole, bears S. 66° E., 40 lks. dist., with  
a down fir snag alongside, 30 ins. diam., with  
scribe marks 1/4 S BT visible on open and decayed  
double blaze.

At the corner point

Set an iron post, 28 ins. long, 2 1/2 ins. diam., 24 ins.  
in the ground, with brass cap mkd.

T 2 S R 36 E  
1/4  
S 4 | S 3  
1975

from which new bearing trees

A pine, 9 ins. diam., bears N. 82 3/4° E., 7 lks.  
dist., mkd. 1/4 S3 BT.

A pine, 18 ins. diam., bears S. 49 3/4° W., 89 lks.  
dist., mkd. 1/4 S4 BT.

Deposit corner stone alongside iron post.

The cor. of secs. 28, 29, 32, and 33, monumented with a  
basalt stone, 15 x 12 x 8 ins., firmly set 6 ins. in a  
mound of stone, 2 ft. base, 1 1/2 ft. high, mkd. with 4  
grooves on E. and 1 groove on S. faces, from which the  
remains of the original bearing trees:

A pine, 22 ins. diam., bears S. 73° W., 146 lks.  
dist., with scribe marks R36E S32 visible on  
opened blaze.

A pine, 28 ins. diam., bears N. 70° W., 154 lks.  
dist., with healed blaze. (Record, 152 lks.)

At the corner point

Set an iron post, 28 ins. long, 2 1/2 ins. diam., 10 ins.  
in the ground, and in a mound of stone, 4 1/2 ft. base, to  
top, with brass cap mkd.

T 2 S R 36 E  
S 29 | S 28  
S 32 | S 33  
1975

from which new bearing trees

T2S36 C13

T2S 36 V09

**UNION COUNTY  
SURVEYOR**

Date Received 3/15/13

Date Filed 3/15/13

By [Signature] DEPUTY

File No. 329-2013R

**CERTIFIED RECORD OF LAND CORNER MONUMENTATION**

**HISTORY OF ORIGINAL CORNER ESTABLISHED:**

Corner originally established by John A. Hurlburt under GLO Contract No. 201, dated August 5, 1873. Surveyor General field notes state:

Set basalt stone 15x12x10. 8 in. in the ground. for 1/4 sec cor.

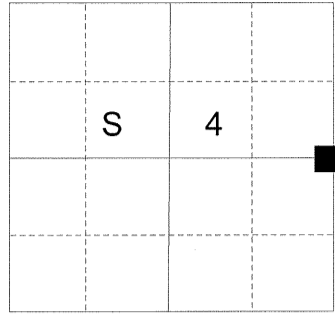
Fir 18 in dia West 13 lks  
Fir 30 in dia S66°E 40 lks

BLM Surveyor, A. Joseph Garrison brings the corner monument up to standard from original GLO evidence under Gov't Contract No. 350, dated June 16, 1975. Surveyor General field notes state:

Set an iron post, 28 ins. long, 2 1/2 ins. diam., 24 ins. in the ground with brass cap mkd. as shown below. From which:

A pine, 9 ins. diam., bears N. 82 3/4° E., 7 lks. dist., mkd. 1/4 S3 BT.  
A pine, 18 ins. diam., bears S. 49 3/4° W., 89 lks. dist., mkd. 1/4 S4 BT.

T 2 S R 36 E C-13



**DESCRIPTION OF CORNER EVIDENCE FOUND:**

Found a 2 1/2" iron pipe with a 3" brass cap marked as shown below 6" above ground in a 1 foot diameter collar of stone. From which:

A 21 inch Ponderosa Pine bears S 50° W, a distance of 58.70 feet alive and vigorous with scribe marks visible on partially healed blaze.

**DESCRIPTION OF MONUMENT AND ACCESSORIES I ESTABLISHED TO PERPETUATE THE ORIGINAL LOCATION OF THIS CORNER:**

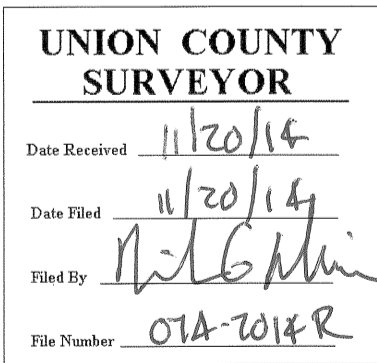
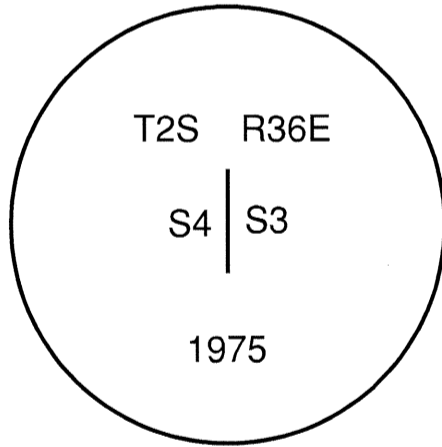
From the iron pipe monument,

**NEW BEARING TREES:**

A 8 inch Douglas Fir bears N 54° E, a distance of 30.05 feet, marked 1/4 S3 BT.  
A 9 inch Ponderosa Pine bears S 32° E, a distance of 14.00 feet, marked 1/4 S3 BT.  
A 10 inch Douglas Fir bears N 57° W, a distance of 14.00 feet, marked 1/4 S4 BT.

I hereby certify that this corner was perpetuated on November 19, 2014.

Witness: Thomas J. Kopp



I used a steel tape and magnetic compass in the establishment of the new accessories. I used 16° East declination, the distances are to a 60d spike driven into the right side of the root crown of the new bearing trees. A brass washer marked OPLS 83571 is attached to the BT blaze of the new bearing trees.