

CERTIFIED RECORD OF LAND CORNER MONUMENTATION

**HISTORY OF ORIGINAL CORNER ESTABLISHED:**

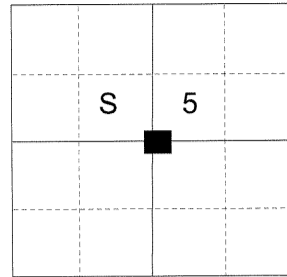
Corner not originally established

T 2 S R 36 E C-07

**DESCRIPTION OF CORNER EVIDENCE FOUND:**

None

See Survey No. 026-2015



**DESCRIPTION OF MONUMENT AND ACCESSORIES I ESTABLISHED TO PERPETUATE THE ORIGINAL LOCATION OF THIS CORNER:**

At the position determined by survey, I set a 2 ½" x 30" aluminum pipe with a 2 ½" aluminum cap marked as shown, 28" in the ground with a collar of stone 2 foot diameter. From which:

**NEW BEARING OBJECTS:**

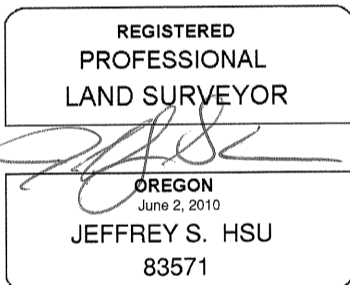
- A 9" Ponderosa Pine bears North 87° East, a distance of 3.85 feet, marked C 1/4 S5 BT.
- A 9" Ponderosa Pine bears South 10° East, a distance of 14.05 feet, marked C 1/4 S5 BT.
- A 5" Lodgepole Pine bears South 57° West, a distance of 17.05 feet, marked C 1/4 S5 BT.
- An 8" Lodgepole Pine bears North 34° West, a distance of 25.10 feet, marked C 1/4 S5 BT.

Corner monument falls 2.5 feet East of North/South running fenceline.

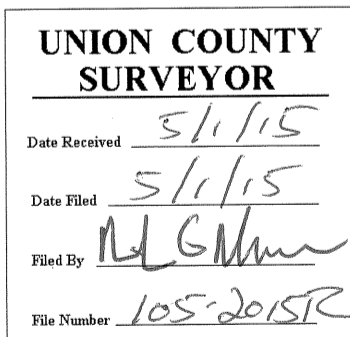
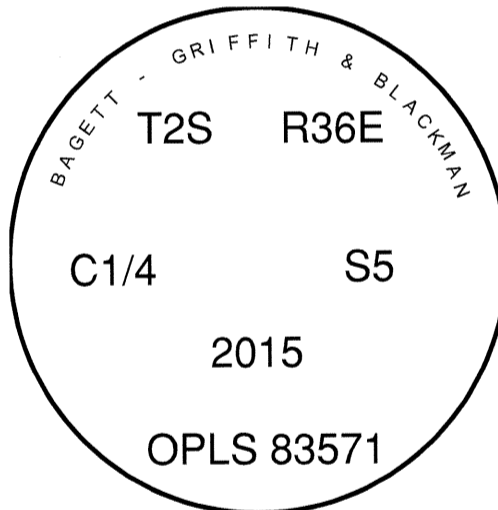
I set a steel fencepost approximately 1 foot North of corner monument.

I hereby certify that the corner was monumented on April 30, 2015.

Witness: Thomas J. Kopp



Renewal Date: June 30, 2017



I used a steel tape and magnetic compass in the establishment of the new accessories. I used 16° East declination, the distances are to a 60d spike driven into the right side of the root crown of the bearing trees. A brass washer marked OPLS 83571 is attached to the BT blaze of the new bearing trees.