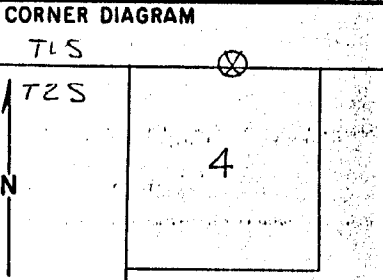


Index File No. A-11 CORNER RECORD (SEARCH) (Ref. FSM 7151.4) Tract or Survey No. \_\_\_\_\_ Cor. No. \_\_\_\_\_  
 T 2S R. 36E R.D. LAGRANDE County UNION  
 Merid. Willc N.F. W-W State OREGON



DESCRIBE CORNER MONUMENT FOUND

STONE 18" x 14" x 16" - 8" ABOVE GROUND  
(2 P.P. STUMPS CORRECTLY LOCATED)

DESCRIBE BEARING TREES OR OTHER OFFICIAL ACCESSORIES FOUND

36" P.P. STUMP - POOR COND. IN SEC 4  
NO SCRIBING VISIBLE, ONLY BOTTOM OF BLAZE  
REMAINS

PHOTO IDENTIFICATION DATA <sup>6</sup> 7/5/67  
 Photo No. ENW 4-188  
 Filed At. \_\_\_\_\_  
 Object Ident. \_\_\_\_\_  
 Ident. By prindle <sub>Signature</sub> <sup>7</sup>

DESCRIBE CORNER LOCATION RELATIVE TO NEAR-BY FEATURES, ALSO HOW TO REACH CORNER <sup>3</sup>

PLANE COORDINATE POSITION DATA

State \_\_\_\_\_ Zone \_\_\_\_\_  
 X \_\_\_\_\_  
 Y \_\_\_\_\_  
 Estab. By \_\_\_\_\_ <sub>Agency</sub> <sup>8</sup>

Signature DANLSTROM Title C&T Division \_\_\_\_\_ Headquarters L-G Date 5-16-73 7100-52 (3/68) <sup>4</sup> <sup>5</sup>

**UNION COUNTY SURVEYOR**

---

Date Received \_\_\_\_\_

Date Filed 12-16-87

By G. LANGLITZ, DEPUTY

File No. 173-87R

A-11

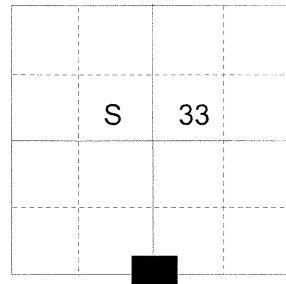
**CERTIFIED RECORD OF LAND CORNER MONUMENTATION**

**HISTORY OF ORIGINAL CORNER ESTABLISHMENT:**

Corner originally established by John A. Hurlburt under GLO Contract Number 201, dated August 5, 1873. Surveyor General record states:

T 1 S R 36 E Z-11

Set basalt stone 18x14x6-8 in. in ground for 1/4 Sec. Cor.



Union County monumentation record 173-87R is a Forest Service corner record. Record states: Stone 18"x14"x16"-8" above ground (2 P.P. stumps correctly located. 36" P.P. stump - poor cond. in sec 4. No scribing visible, only bottom of blaze remains.

**DESCRIPTION OF CORNER EVIDENCE FOUND:**

Found a basalt stone 18"x14"x6" lying flat on ground with a steel fence post with BLM K-tag along the East side, from which:  
A pine stump bears North 10° East, a distance of 14 feet.  
A pine stump bears South 28° East, a distance of 30 feet.

**DESCRIPTION OF MONUMENT AND ACCESSORIES I ESTABLISHED**

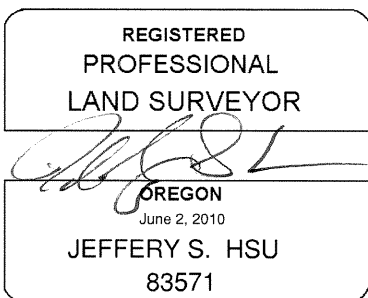
**TO PERPETUATE THE ORIGINAL LOCATION OF THIS CORNER:**

At the stone position, I set a 2 1/2" x 30" aluminum pipe with 2 1/2" aluminum cap, marked as shown below, 27 inches in the ground, with a mound of stone 2 feet diameter, from which:

- An 11 inch Douglas Fir bears North 27° East, a distance of 19.45 feet, marked 1/4 S33 BT.
- A 12 inch Ponderosa Pine bears South 46° East, a distance of 44.55 feet, marked 1/4 S4 BT.
- A 10 inch Ponderosa Pine bears South 23° West, a distance of 53.85 feet, marked 1/4 S4 BT.
- A 14 inch Ponderosa Pine bears North 46° West, a distance of 54.60 feet, marked 1/4 S33 BT.

Set steel fencepost 1 ft. East of corner monument.  
I hereby certify that the corner was perpetuated on October 30, 2012.

Witness: Rick Robinson



Renewal Date: June 30, 2013

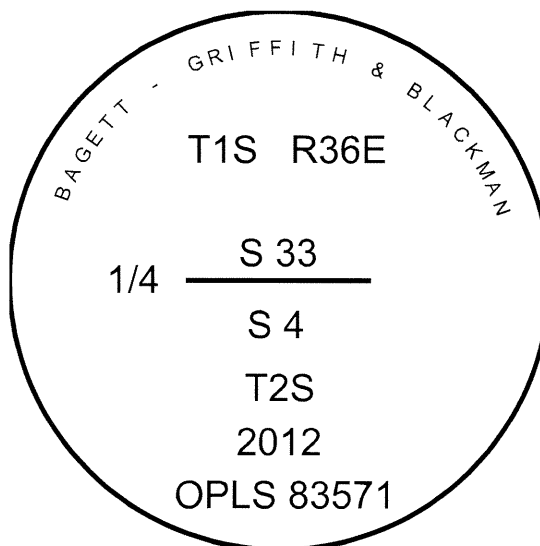
**UNION COUNTY SURVEYOR**

Date Received 11/12/12

Date Filed 11/12/12

Filed By R. ROBINSON, DEPUTY

File Number 075-2012R



I used a steel tape and magnetic compass in the recovery of the bearing tree and establishment of new trees. I used 16° East magnetic declination and the bearings and distances are to the center of root crown on old bearing tree. Distance is to a 60d spike in the right hand side of the new trees. Bearing is to a brass washer marked OPLS 83571 in the lower BT blaze.