

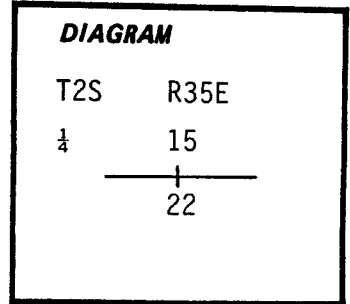
CERTIFIED RECORD OF LAND CORNER MONUMENTATION

Index File No. N-15

History of original corner establishment:

In 1882 under GLO Contract No. 451 Rufus S. Moore set a post 3 ft. long, 3 ins. square 24" in ground for 1/4 Sec. Cor. marked 1/4 S on N. face. From which:

- A Pine 6 ins. dia. bears N 23°E 23 lks. dist., marked 1/4 S BT.
- A Pine 9 ins. dia. bears S3°E, 21 lks. dist., marked 1/4 S BT.



Description of corner evidence found:

A diligent search was made and no evidence of original post or BT's could be found. Area is heavily logged with stumps cut pretty low. Rufus S. Moore blazes his trees approx. 3 - 4 feet above the ground.

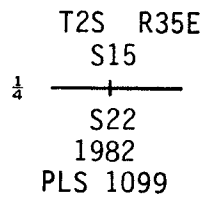
Description of monument and accessories established to perpetuate the original location of this corner:

Corner position established by proportioning between the NE and NW corners of Section 22. At surveyed point set 2½"x30" Galvanized pipe with brass cap stamped:

Set pipe 24" in ground with mound of stone and dirt to cap.

Bearing Trees:

- A Tamarack 6" dia. bears N4½°E, 49.0 ft., scribed 1/4 S15 BT.
- A Lodgepole Pine 9" dia. bears S73½°E, 64.5 ft., scribed 1/4 S22 BT.



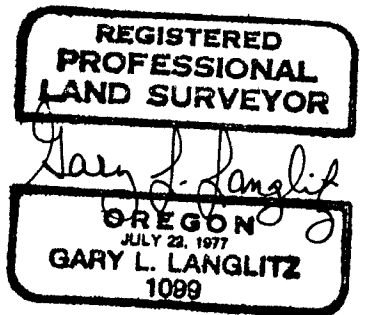
Placed wood post 7 ft. west of corner. Painted Trees and attached signs per Standard Specifications for Cadastral Surveys, USFS, Region 6, Oct., 1979.

Corner falls in heavily cut area 45 ft. north of E-W fence and cut line and 35 ft. east of N-S dirt road.

Compass Declination: 18½° E.

I hereby certify the above described corner monument and/or accessories was established on July 28, 1982.

Witnesses: R. Orton
G. Wagoner



Office of..... Surveyor..... County of..... Union.....
 State of..... Oregon..... I hereby certify that the within instrument was filed in this office
 for record on the 4 day of OCTOBER, 1982
 Howard L. Perry by Gary L. Langlitz
 (COUNTY OFFICIAL) (DEPUTY)

UNION COUNTY SURVEYOR

Date Received 798-276

Date Filed _____

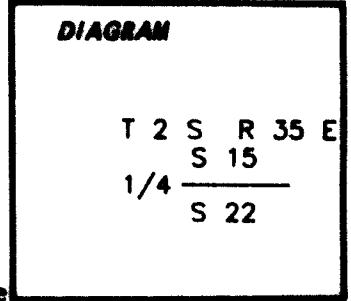
By _____

File No. 2D2-84 R

CERTIFIED RECORD OF LAND CORNER MONUMENTATION

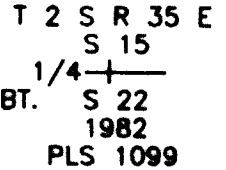
File Index N - 15

History of original corner establishment:



In 1882, Rufus S. Moore, under contract 451, set a post 3 ft. long, 3 ins. square, 24" in the ground, for the 1/4 sec. cor., mkd. 1/4 on N. face. From which:
 A Pine 6 in. in dia. bears N23°E, 23 lks. dist., mkd. 1/4 S BT.
 A Pine 9 in. in dia. bears S03°E, 21 lks. dist., mkd. 1/4 S BT.

In 1982, Gary L. Langlitz, P.L.S. 1099, states:
 Point for the 1/4 sec. cor. of secs. 15 and 22 at proportionate distance there is no remaining evidence of the original corner. Set a galvanized pipe, 30 ins. long, 2 1/2 ins. diam., 24 ins. in the ground, with brass cap mkd.
 From which:

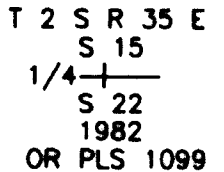


A Tamarack, 6 ins. diam., bears N. 4.5° E., 49.0 ft. dist., mkd. 1/4 S15 BT.
 A Lodgepole Pine, 9 ins. diam., bears S. 73.5° E., 64.5 ft. dist., mkd. 1/4 S22 BT.

Description of corner evidence found:

Found:

A galvanized pipe, 6 ins. above ground, 2 1/2 ins. diam., with brass cap mkd.
 From which
 A Tamarack, 9 ins. diam., bears N. 4.5° E., 49.0 ft. dist., with scribe marks visible in partially healed blaze.
 A Lodgepole Pine, 10 ins. diam., bears S. 73.5° E., 64.5 ft. dist., mkd. 1/4 S22 BT.



Description of monument and accessories I established to perpetuate the original location of this corner:

From the 1982 monument I marked new references

A Lodgepole Pine, 10 ins. diam., bears S. 46° W., 64.8 ft. dist., mkd. 1/4 S22 BT.
 A pressure treated post, 4"X4", 5 ft. above the ground, bears N. 84° W., 8.0 ft. dist.

The tree is double blazed, with a brass washer, mkd. LS 2211, nailed between the B & T. The post also has one of the washers attached.

Tools used; hand compass (declination 19.5° East) and a 200 ft. Kesson tape.

Crew members: Earl E. Strang, Tracy R. Patterson & Roger O. Green

I hereby certify the above corner point was perpetuated as hereon described, on July 28, 1993.

**REGISTERED
PROFESSIONAL
LAND SURVEYOR**

Roger O. Green

**OREGON
JULY 17, 1988
ROGER O. GREEN
2211**

SEALED: 8/3/93

Roger O. Green, LS 2211, Forest Service Land Surveyor
 3502 Highway 30, La Grande, Oregon, 97850

Office of..... County of.....
 State of....., I hereby certify that the within instrument was filed in this office
 for record on the..... day of.....
 by.....
 (COUNTY OFFICIAL)

19. UNION COUNTY
CLERK

Date Received 11/19/93
 Date Filed 12/14/93
 By [Signature]
 File No 051-1993R

CERTIFIED RECORD OF LAND CORNER MONUMENTATION

HISTORY OF ORIGINAL CORNER ESTABLISHED:

Corner originally established by Rufus S. Moore under GLO contract 451, dated June 12, 1882. Surveyor General field notes state:

Set a post 3 ft. long, 3 ins. sq. 24 ins. in the ground for 1/4 sec. cor, from which:
 A pine 6 ins. in dia. bears N23°E, 23 lks. dist. marked 1/4 S BT.
 A Pine 9 ins. in dia. bears S3°E, 21 lks. dist. marked 1/4 S BT.

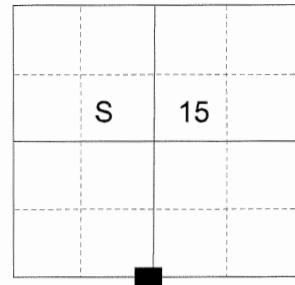
In Survey Number 43-82, Gary Langlitz finds no remains of original corner evidence and places the corner at proportionate position. Union County Monumentation record 202-84R states:
 At surveyed point set 2 1/2"x30" Galvanized pipe with brass cap stamped: Set pipe 24" in the ground with mound of stone and dirt to cap.

Bearing Trees:

A Tamarack 6" dia. bears N4 1/2°E, 49.0 ft., scribed 1/4 S15 BT.
 A Lodgepole Pine 9" dia. bears S73 1/2°E, 64.5 ft., scribed 1/4 S22 BT.

In 1993, Roger Green finds and accepts monument set by Langlitz and takes additional accessories. Union County Monumentation record 051-1993R states:
 From the 1932 monument I marked new references
 A Lodgepole Pine, 10 ins. diam. bears S46°W, 64.8 ft. dist. mkd. 1/4 S22 BT.
 A pressure treated post, 4"x4", 5ft. above the ground, bears N84°W., 8.0 ft. diat.

T 2 S R 35 E N-15



DESCRIPTION OF CORNER EVIDENCE FOUND:

Found 2 1/2" iron pipe with 2 1/2" brass cap marked as shown below, in a collar of stone, from which:

A 15" Western Larch bears North 4° East, a distance of 49.0 feet, alive and vigorous with healed blaze.
 An 11" Lodgepole Pine bears South 73° East, a distance of 64.5 feet, alive and vigorous with scribe marks '1/4 S22 BT' visible on a open blaze.
 As I did not have the Green monumentation record at the time of visitation, I did not look for the Southwest tree taken by Green. The pressure treated post was observed at the position as per monumentation records, however, this was not measured.

SEE SURVEY NUMBER 015-2016

DESCRIPTION OF MONUMENT AND ACCESSORIES I ESTABLISHED

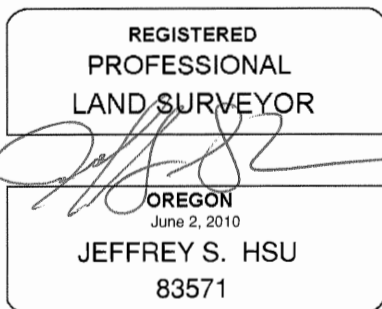
TO PERPETUATE THE ORIGINAL LOCATION OF THIS CORNER:

From the iron pipe monument:

NEW BEARING OBJECTS:

An 8 inch Lodgepole Pine bears South 37° West, a distance of 13.95 feet, marked 1/4 S22 BT.
 An 8 inch Lodgepole Pine bears North 35° West, a distance of 11.80 feet, marked 1/4 S15 BT.

Corner falls approximately 30 feet East of a North/South running road.
 I hereby certify that this monument was perpetuated May 11, 2016.



Renewal Date: June 30, 2017

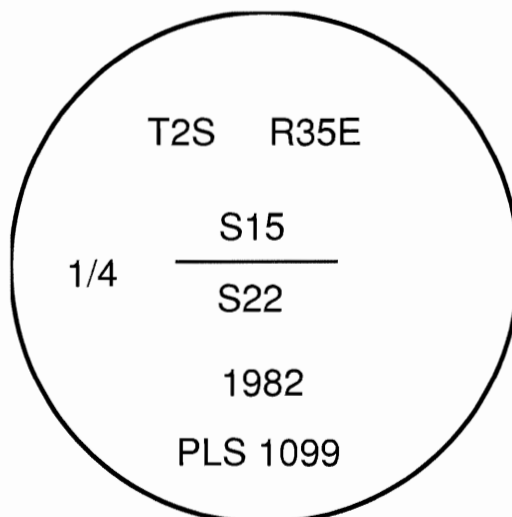
UNION COUNTY SURVEYOR

Date Received 5/16/16

Date Filed 5/16/16

Filed By [Signature]

File Number 016-2016R



I use a steel tape and magnetic compass in the establishment of the accessories. Magnetic declination used was 15° East. Distances are to a 60d spike in the right hand side of the root crown of the bearing trees.