

CERTIFIED RECORD OF LAND CORNER MONUMENTATION

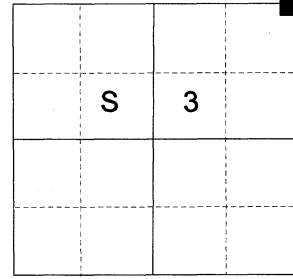
HISTORY OF ORIGINAL CORNER ESTABLISHED:

Corner originally established under GLO contract number 397, executed by Jacob Cooper dated July 1, 1881. Surveyor General field notes state:

Set post for 4 1/2 ft. long, 4 ins. square, 2 ft. in the ground, on tableland thickly set with black pine timber and spruce undergrowth for cor. to secs. 2, 3, 34, and 35 marked T1SS35 on NE, R35ES2 on SE, T2SS3 on SW, and S34 on the NW faces with 2 notches on the E and 4 notches on the W faces from which:

- A Pine 10 ins. diam bears S 56° W 17 lks dist. marked T2S R35E S3 BT.
- A Pine 9 ins. diam bears S 42° E 21 lks dist. marked T2S R35E S2 BT.
- A Pine 11 ins. diam bears N 16° W 19 lks dist. marked T1S R35E S34 BT.
- A Pine 9 ins. diam bears N 17° E 19 lks dist. marked T1S R35E S35 BT.

T 2 S R 35 E A-17



Under GLO contract number 451, executed by Rufus Moore and dated June 12, 1882, Surveyor General field notes state: cor. to secs 2 and 3, which is a post 4 ins. sq. marked T1SS35 on NE, R35ES2 on SE, T2SS3 on SW, and S34 on NW, from which:

- A Pine 18 ins. diam bears S 56° W 17 lks dist. marked T2S R35E S3 BT.
- A Pine 9 ins. diam bears S 42° E 21 lks dist. marked T2S R35E S2 BT.
- A Pine 11 ins. diam bears N 15° W 19 lks dist. marked T1S R35E S34 BT.
- A Pine 9 ins. diam bears N 17° E 19 lks dist. marked T1S R35E S35 BT.

Under GLO contract number 635, executed by Manius Buchanan and dated June 12, 1882, Surveyor General field notes state: Cor. to secs 2, 3, 34, and 35 which is a post 2 ft. high, 4 ins. square, marked T1SS35 on NE, R35ES2 on SE, T2SS3 on SW, and S34 on NW, witnessed and described by the Surveyor General and to conform to the marking on the post.

DESCRIPTION OF CORNER EVIDENCE FOUND:

Search area falls in a historically heavily logged area near a road and where multiple water courses coming together. Found very few stumps that could have existed at the time the corner was established. The topography call to the East of a creek is harmonious but indiscernible as to an exact location due to the multiple water courses as it crosses the Township line.

See Union County Survey 054-2021

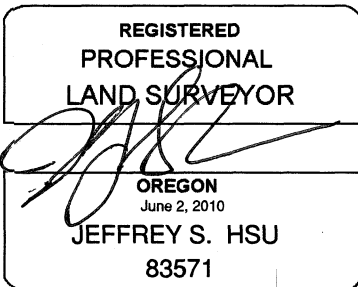
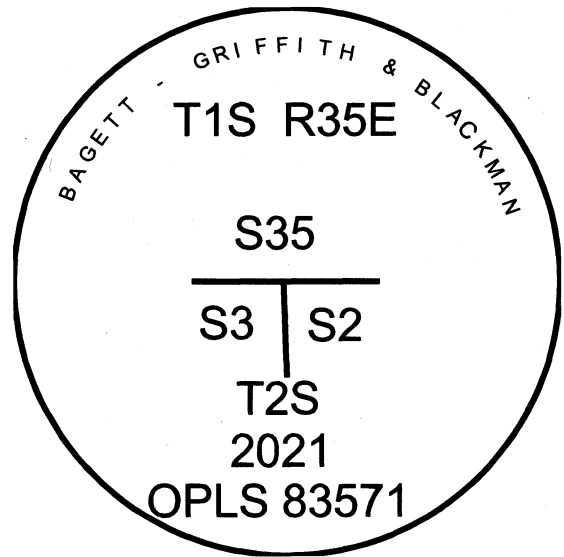
DESCRIPTION OF MONUMENT AND ACCESSORIES I ESTABLISHED TO PERPETUATE THE ORIGINAL LOCATION OF THIS CORNER:

At proportionate position I set a 2 1/2" x 30" aluminum pipe, 29" in the ground, with 3" aluminum cap marked as shown below with 2' diam. collar of stone, from which:

NEW BEARING OBJECTS:

- A 9" Lodgepole Pine bears South 53° East, a dist. of 18.15 ft., marked T2SR35ES2BT.
- A 4" Lodgepole Pine bears South 22° West, a dist. of 6.45 ft., marked T2SR35ES3BT.
- A 10" Lodgepole Pine bears West, a dist. of 2.30 ft., marked T2SR35ES3BT.
- The East end of a 3' diam. corrugated metal pipe bears North 76° West, a dist. of 15.35 ft., marked with 1/4" drill hole in center of X on top edge of culvert.

Set steel fence post approx. 1 ft. South
I hereby certify that the corner was monumented on November 11, 2021.
Witness: Kyle A. Tucker



Renewal Date: June 30, 2023

UNION COUNTY SURVEYOR

Date Received 11/19/21

Date Filed 11/19/21

Filed By [Signature]

File Number 060-2021R

I used a steel tape and magnetic compass in the establishment of the new accessories. I used 14° East declination. Distances are to a 60d spike driven into the right side of the root crown of the bearing trees. Bearings are to a brass washer marked OPLS 83571 in the BT blaze of the new bearing trees.