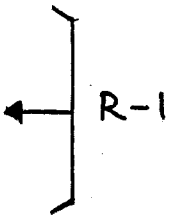


Sec Cor for 19, 20, 29, 30, 1N 41E
1 BT for Sec 19 is P.R. 13"
No other Bts found. Pile of rocks
and post for corner.

Sec Cor for 17, 18, 19, 20 1N
41E Found. Marked also
3 matches on South face
5 matches on East face

Sec Cor 31, 32 2N 41E 5 & 6
1N 41E Found. BT for
Sec 6 DDF 30" standing.
Sec 5 PP 4A 22"
Sec 31 DF A 25"
Mount of rocks for cor.

Sec Cor 24, 25 2N 42E + 19 +
30 2N 41E Mount of Stone
Bound with Hub + tack. Cruise
tag on high pine stump. No
Bts found



UNION COUNTY SURVEYOR	
Date Received	<u>1-4-88</u>
Date Filed	<u>1-7-88</u>
By	<u>G. LANGLITZ, DEPUTY</u>
File No.	<u>03-88R</u>

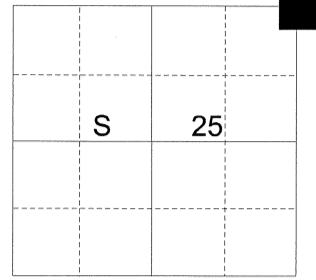
R-1

CERTIFIED RECORD OF LAND CORNER MONUMENTATION

HISTORY OF ORIGINAL CORNER ESTABLISHMENT :

Corner originally established by Rufus S. Moore under GLO contract Number 382, dated March 23, 1881. Surveyor General record states: Set basalt stone 18x12x10 in mound of stone for Cor to Secs 24, 25, from which,
A pine 34 ins diam bears N.55°E., 10 lks dist.

T 2 N R 40 E R-25



Recovered by Mark A. Fullerton under GLO Contract Number 449, dated June 13, 1882. Survey General record states: Intersect Tp. line 8 lks N. of cor to Secs. 19, 24, 25 and 30 which is a basalt stone 18x12x10 ins. firmly set in ground, marked with 2 notches on S. and 4 notches on West edges, from which,
A pine 34 in dia. bears N. 65° E., 10 lks. dist marked T2N R41E S19 BT with mound of stone alongside.

Survey done in November 1965 and revised October 1968, done by Oregon State Highway Department, and recorded later by Andrew T. Blackly as Survey Number 041-1991 calls finding the original bearing tree.

DESCRIPTION OF CORNER EVIDENCE FOUND :

Found a 20" pine stump, 5 feet high, with blaze evident and several chop marks, but no scribe marks visible. Oregon State Board of Forestry tag with dates of 6/3/56, 11/9/60, and 8/16/63 scribed attached to face of tree.

DESCRIPTION OF MONUMENT AND ACCESSORIES I ESTABLISHED TO PERPETUATE THE ORIGINAL LOCATION OF THIS CORNER :

At record bearing and distance as per the Fullerton survey, I set a 1"x30" iron pipe with 2 1/2" brass cap marked as shown, 24 inches in the ground, in a mound of stone 2 feet in diameter, from which:

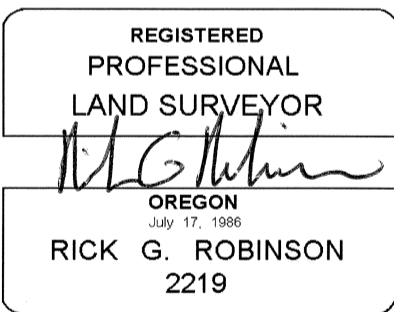
NEW BEARING OBJECTS:

- A 15" diameter Ponderosa Pine bears North 44° East, a distance of 69.37 feet, marked T2N R40E S19 BT.
- A 14" diameter Ponderosa Pine bears South 66° East, a distance of 43.09 feet, marked T2N R40E S30 BT.
- A 12" diameter Ponderosa Pine bears South 68° West, a distance of 24.43 feet, marked T2N R41E S25 BT.
- A 15" diameter Ponderosa Pine bears North 50° West, a distance of 96.38 feet, marked T2N R41E S24 BT.

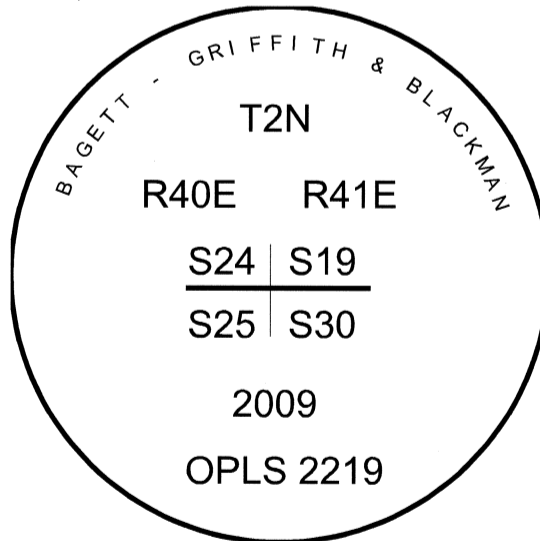
Corner sits 5 feet East of Northwest running dirt road in East/West running fenceline. A steel gate post bears West, 2 feet distant.

I hereby certify that the corner was monumented on September 2, 2009.

Witness: Jeff Hsu



Renewal Date: December 31, 2010



UNION COUNTY SURVEYOR

Date Received 9/9/09

Date Filed 12/5/09

Filed By [Signature]

File Number 035-2009R

I used a magnetic compass and steel tape in the establishment of the accessories. Distances are measured to a 60d spike set in the right hand side of the tree. Bearings are measured to a brass washer marked OPLS 2219 set in the center of the BT blaze. Magnetic declination used was 18° East.