

UNION COUNTY SURVEYOR

CERTIFIED RECORD OF LAND CORNER MONUMENTATION

HISTORY OF ORIGINAL CORNER ESTABLISHMENT:

Corner originally established by Rufus S. Moore under GLO contract Number 382, dated March 23, 1881. GLO record states:

Set Basalt stone 14x8x8 in a mound of stone for 1/4 Sec. Cor.

No record of further monumentation found in Union County survey records.

DESCRIPTION OF CORNER EVIDENCE FOUND:

NONE

See Survey Number 023-1998

DESCRIPTION OF MONUMENT AND ACCESSORIES I ESTABLISHED TO PERPETUATE THE ORIGINAL LOCATION OF THIS CORNER:

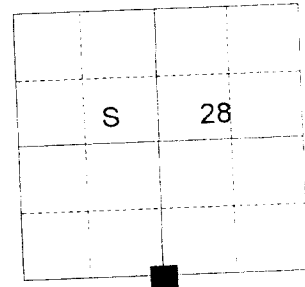
At surveyed proportionate position, I set a 5/8" x 30" Copper Clad with 2 1/2" Brass Cap marked as shown 27 inches in the ground from which:

NEW BEARING OBJECTS AND TREES:

- A 27" Ponderosa Pine bears N 1° E, a distance of 125.54 feet, marked T 2 N, R 40 E, S28, 1/4, BT
- An 11" Ponderosa Pine bears S 74° E, a distance of 80.74 feet, marked T 2 N, R 40 E, S33, 1/4, BT
- A 19" Ponderosa Pine bears S 63° W, a distance of 52.71 feet, marked T 2 N, R 40 E, S33, 1/4, BT
- A 5/8" x 30" Iron Rebar with 1 1/2" Aluminum Cap bears N 37° W, a distance of 50.69 feet, marked NW RP

I hereby certify that the corner was monumented on June 16, 1998.
Witness: Jeff Madsen, Greg Blackman Jr, and Norb Volny

T 2 N R 40 E V-11



REGISTERED
PROFESSIONAL
LAND SURVEYOR

Gregory T. Blackman

OREGON
JULY 13, 1973

GREGORY T. BLACKMAN
991

Renewal Date: December, 31 1999

BAGETT - GRIFFITH & BLACKMAN

T 2 N R 40 E

1/4 — S28
S33

1998

OPLS 991

UNION COUNTY SURVEYOR

Date Received 7/20/98

Date Filed 8/29/98

Filed By R. ROBINSON DEPUTY

File Number 034-1998R

I used a steel tape and magnetic compass in the establishment of the new accessories. I used 18° East declination, the distances are to the center of the reference object. BT distances are to a 60d spike driven into the right side of the root crown. A brass washer marked OPLS 991 is attached to the BT Blaze.

HORIZONTAL CONTROL DATA

UNION COUNTY, OREGON

OREGON STATE PLANE, NORTH ZONE (3601)

STA NAME: 2019010

1/4 SECTION CORNER COMMON TO SECTIONS 28 AND 33

TWP. 2 N RGE. 40 E.

GEODETIC COORD: NAD 83(91)

DATE TIED: January 28, 2019

LAT: 45 ° 37 ' 1.85447 " N

SURVEYOR: RICK G. ROBINSON
OPLS 2219

LONG: 117 ° 49 ' 6.85918 " W

FIRM: BAGETT, GRIFFITH, & BLACKMAN
2006 ADAMS AVENUE
LAGRANDE, OR 97850
(541) 963-6092

SP. COOR: NAD 83(91)

N: 722497.475 INT FT.

E: 8888077.461 INT FT.

TYPE: GPS

THETA: 1 ° 54 ' 5.87249196 "

ORDER: SECOND CLASS: 1

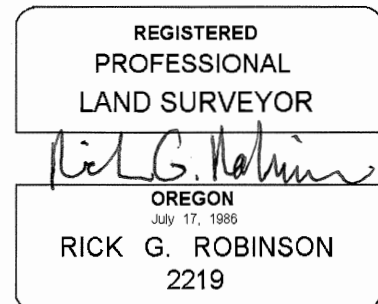
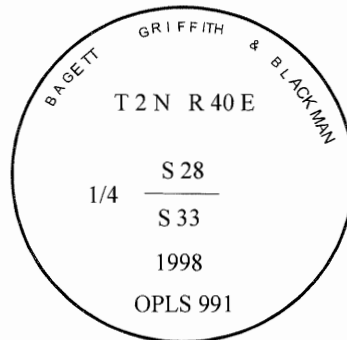
SCALE FACTOR: 0.9999251907

ELEV: 3476.12 US FT.

ELEV: DATUM: NGVD 29

COMMENTS:

2 1/2" brass cap marked as shown
3" exposed



Renewal Date: December 31, 2020

1 METER = 3.2808333333... US FEET = 39.37 INCHES

1 METER = 3.280839895 INT'L FEET OR 1 INCH = 2.54 CM

TO CALCULATE ELEVATION FACTOR (IN THE NORTH AMERICAN CONTINENT)

DIVIDE 20,906,000 BY (20,906,000 + ELLIPSOID ELEV. IN FEET)