

CERTIFIED RECORD OF LAND CORNER MONUMENTATION

HISTORY OF ORIGINAL CORNER ESTABLISHED:

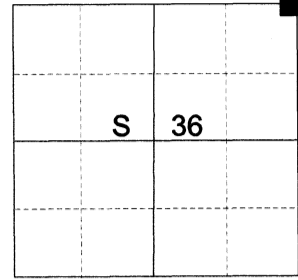
Corner originally established under GLO joint contract number 382 executed by Rufus S. Moore dated March 23rd 1881. Surveyor General field notes state:

Set Basalt Stone 15 x 8 x 6 and dug pits as per instructions for cor. to secs. 25, 36, 30, and 31, from which:

A Pine 24 in. diam. bears S8°E 164 lks dist.

Road Petition 480 indicates road intended to follow Range line.

T 2 N R 39 E V-25



DESCRIPTION OF CORNER EVIDENCE FOUND:

None Found. Accepted the centerline of Hardy Road for Easting and existing fencelines running East and West.

SEE SURVEY NUMBER 028-2026

DESCRIPTION OF MONUMENT AND ACCESSORIES I ESTABLISHED TO MONUMENT THE ORIGINAL LOCATION OF THIS CORNER:

At the intersection of the centerline of the road and the East and West fence lines, I set a 5/8" x 30" iron pin, 36" in the ground (6" under the gravel), with 3" brass cap marked as shown, from which:

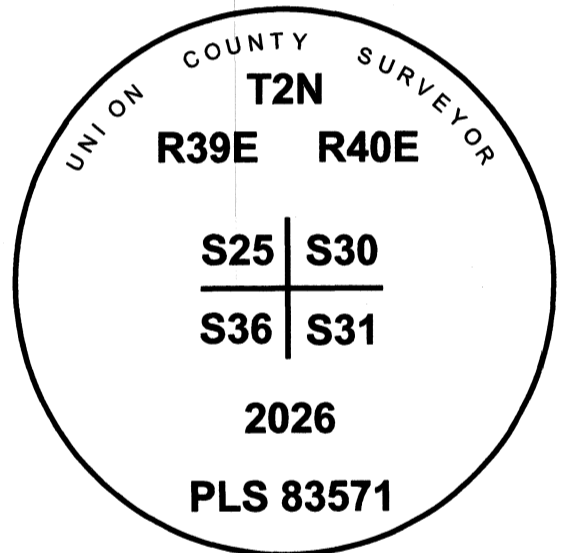
NEW BEARING OBJECTS:

A 5/8" x 15" iron pin bears North 40°07' East, a dist. of 36.57 ft., with 1 1/2" aluminum cap marked UNION COUNTY SURVEYOR NE RP.

A 5/8" x 15" iron pin bears South 29°05' East, a dist. of 51.13 ft., with 1 1/2" aluminum cap marked UNION COUNTY SURVEYOR SE RP.

A 5/8" x 15" iron pin bears South 35°24' West, a dist. of 30.56 ft., with 1 1/2" aluminum cap marked UNION COUNTY SURVEYOR SW RP.

A 5/8" x 15" iron pin bears North 25°01' West, a dist. of 58.77 ft., with 1 1/2" aluminum cap marked UNION COUNTY SURVEYOR NW RP.



I hereby certify that the corner was monumented on June 9th, 2026.

Witness: Kyle Tucker

REGISTERED
PROFESSIONAL
LAND SURVEYOR

OREGON
June 2, 2010
JEFFREY S. HSU
83571

Renewal Date: June 30, 2027

UNION COUNTY
SURVEYOR
Date Received 6/24/26
Date Filed 6/24/26
Filed By
File Number 016-2026P

I use a Leica GS 18I with RTK in the establishment of the new bearing objects. Basis of Bearing is OCRS La Grande. Bearings and distances are measured to the center of the aluminum caps.