

CERTIFIED RECORD OF LAND CORNER MONUMENTATION

HISTORY OF ORIGINAL CORNER ESTABLISHED:

Corner originally established under GLO joint contract number 382 executed by Rufus S. Moore dated March 23rd 1881. Surveyor General field notes state:

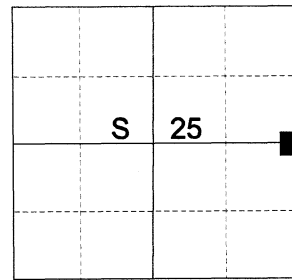
Set post for 1/4 sec. cor. from which:

A Pine 5 ins. diam. bears N32°W 51 lks. dist.

A Pine 30 ins. diam. bears S75°E 11 lks. dist.

House bears S53°E about 17 chs.

T 2 N R 39 E T-25



Survey for Road Petition 480 indicates an angle point at this corner.

DESCRIPTION OF CORNER EVIDENCE FOUND:

None. Hardy Road runs South and East from this corner. I accept the apparent point of intersection of Hardy Road, as evidenced by the constructed centerline and right of way fences as best available evidence of the corner position.

SEE SURVEY NUMBER 028-2026

DESCRIPTION OF MONUMENT AND ACCESSORIES I ESTABLISHED TO MONUMENT THE ORIGINAL LOCATION OF THIS CORNER:

At the apparent point of intersection of Hardy Rd., I set a 2 1/2" x 30" aluminum pipe, 36" in the ground, with 3" aluminum cap marked as shown, from which:

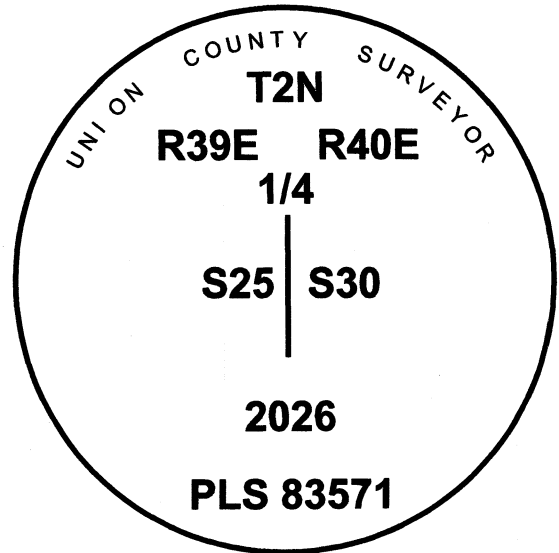
NEW BEARING OBJECTS:

A 5/8" x 30" iron pin bears North 64°04' East, a dist. of 53.64 ft., with 1 1/2" aluminum cap marked UNION COUNTY SURVEYOR NE RP.

A 5/8" x 30" iron pin bears South 64°38' East, a dist. of 54.72 ft., with 1 1/2" aluminum cap marked UNION COUNTY SURVEYOR SE RP.

A 5/8" x 30" iron pin bears South 36°03' West, a dist. of 46.13 ft., with 1 1/2" aluminum cap marked UNION COUNTY SURVEYOR SW RP.

A 5/8" x 30" iron pin bears North 32°01' West, a dist. of 19.21 ft., with 1 1/2" aluminum cap marked UNION COUNTY SURVEYOR NW RP.



I hereby certify that the corner was monumented on June 9th, 2026.

Witness: Kyle Tucker

REGISTERED
PROFESSIONAL
LAND SURVEYOR

[Signature]
OREGON
June 2, 2010
JEFFREY S. HSU
83571

Renewal Date: June 30, 2027

UNION COUNTY
SURVEYOR
Date Received 6/24/26
Date Filed 6/24/26
Filed By *[Signature]*
File Number 012-2026R

I use a Leica GS 18XI with RTK in the establishment of the new bearing objects. Basis of Bearing is OCRS La Grande. Bearings and distances are measured to the center of the aluminum caps.