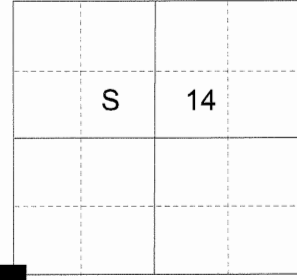


**CERTIFIED RECORD OF LAND CORNER MONUMENTATION**

**HISTORY OF ORIGINAL CORNER ESTABLISHED:**

Corner originally established by Rufus S. Moore under GLO contract Number 382, dated March 23, 1881. Surveyor General record states:  
Set basalt stone 14"x8"x6", from which:  
A Pine 24" diam bears S75°E, 107 lks.

T 2 N R 40 E N-17



Corner was re-established by James Hanley in 1984. Union County Survey record 5-85 states:  
Accepted intersection of road centerline and fence lines for section corner. Set 5/8" rebar with yellow plastic cap marked HANLEY ENGR PLS 1206 for cor. point and 5/8" x 30" rebars 40 ft. West and 40 ft. East.

**DESCRIPTION OF CORNER EVIDENCE FOUND:**

Found a 5/8" rebar at road surface, bent to the SSE.  
From which:  
A 5/8" rebar with yellow plastic cap bears EAST, a dist. of 40.00 feet.  
A 5/8" rebar with yellow plastic cap bears WEST, a dist. of 40.00 feet.

**DESCRIPTION OF MONUMENT AND ACCESSORIES I ESTABLISHED TO PERPETUATE THE ORIGINAL LOCATION OF THIS CORNER:**

At the found iron pin, I remove the bent 4" off the top and place a 2 1/2" aluminum cap, marked as shown, below on the remaining rebar, 4" below the road surface.  
From which:

**NEW BEARING OBJECT:**

A 5/8" x 30" iron pin bears South 41° West, a distance of 24.45 feet, with a 1 1/2" aluminum cap marked UNION COUNTY SURVEYOR SW RP.  
A 5/8" x 30" iron pin bears North 44° West, a distance of 21.45 feet, with a 1 1/2" aluminum cap marked UNION COUNTY SURVEYOR NW RP.

A fence line going West aligns with monument. Corner falls in the centerline of Yarrington Road.

I hereby certify that the corner was perpetuated on January 28, 2019.

Witness: Kyle Tucker

REGISTERED  
PROFESSIONAL  
LAND SURVEYOR



OREGON  
June 2, 2010  
JEFFREY S. HSU  
83571

Renewal Date: June 30, 2019

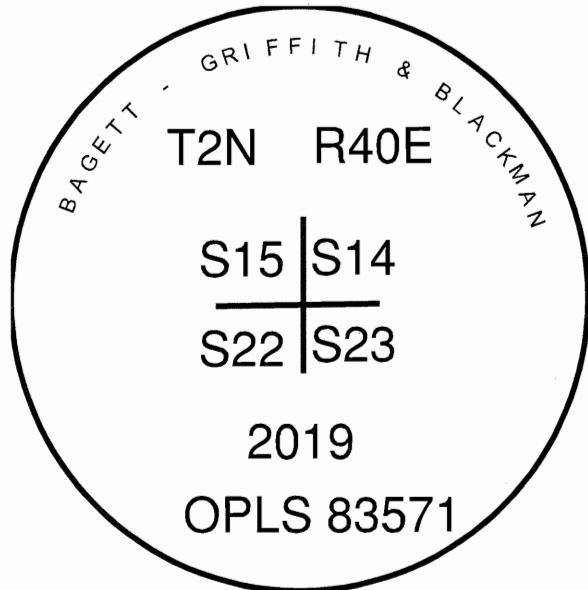
UNION COUNTY  
SURVEYOR

Date Received 2/19/19

Date Filed 2/19/19

Filed By *Nil G. Min*

File Number 006-2019R



BAGGETT - GRIFFITH & BLACKMAN

T2N R40E

S15 | S14

S22 | S23

2019

OPLS 83571

I used a steel tape and magnetic compass in the establishment of the new accessory. I used 13° East declination. Distances and bearings are to the center of the aluminum caps.

# HORIZONTAL CONTROL DATA

## UNION COUNTY, OREGON

### OREGON STATE PLANE, NORTH ZONE (3601)

STA NAME: 2019012

SECTION CORNER COMMON TO SECTIONS 14, 15, 22 AND 23

TWP. 2 N RGE. 40 E.

GEODETIC COORD: NAD 83(91)

DATE TIED: January 28, 2019

LAT: 45 ° 38 ' 45.80821 " N

SURVEYOR: RICK G. ROBINSON  
OPLS 2219

LONG: 117 ° 47 ' 17.18276 " W

FIRM: BAGETT, GRIFFITH, & BLACKMAN  
2006 ADAMS AVENUE  
LAGRANDE, OR 97850  
(541) 963-6092

SP. COOR: NAD 83(91)

N: 733280.458 INT FT.

E: 8895515.095 INT FT.

TYPE: GPS

THETA: 1 ° 55 ' 23.6534698 "

ORDER: SECOND CLASS: 1

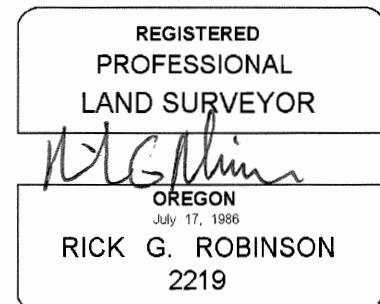
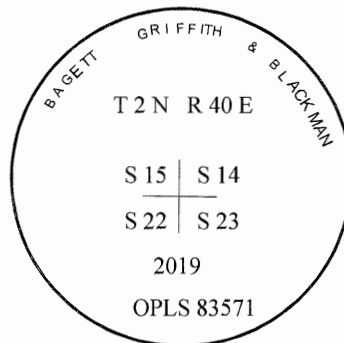
SCALE FACTOR: 0.9999292655

ELEV: 3602.06 US FT.

ELEV: DATUM: NGVD 29

#### COMMENTS:

5/8" iron pin with 2 1/2" aluminum cap  
marked as shown



Renewal Date: December 31, 2020

1 METER = 3.2808333333... US FEET = 39.37 INCHES

1 METER = 3.280839895 INT'L FEET OR 1 INCH = 2.54 CM

TO CALCULATE ELEVATION FACTOR ( IN THE NORTH AMERICAN CONTINENT)

DIVIDE 20,906,000 BY (20,906,000 + ELLIPSOID ELEV. IN FEET)