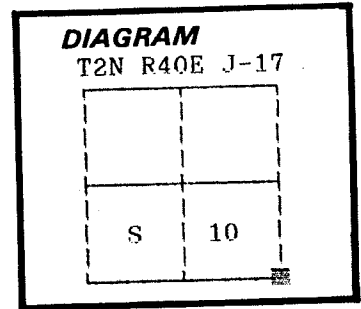


UNION COUNTY  
CERTIFIED RECORD OF LAND CORNER MONUMENTATION

**History of original corner establishment:**

Corner was originally set by Rufus S. Moore under GLO contract no. 382, dated March 23, 1881.

Corner was re-established on Union County Survey 5-85, which shows a 5/8" x 30" rebar with a yellow plastic cap marked HANLEY ENGR. PLS 1206, with rebars 50 feet West and 40 feet East of corner position.



No record of subsequent monumentation found in Union County survey records.

**Description of corner evidence found:**

Found 5/8" rebar with yellow plastic cap marked HANLEY ENGR. PLS 1206, from which:

- A 5/8" rebar bears East 40 feet
- A 5/8" rebar bears West 50 feet

**Description of monument and accessories I established to perpetuate the original location of this corner:**

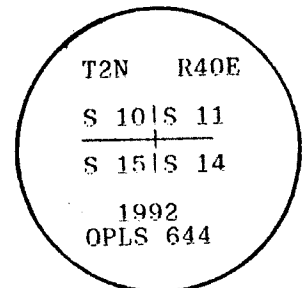
I replaced the yellow plastic cap with a 2" aluminum cap marked as shown, from which:

**NEW BEARING OBJECTS:**

- A 21" Ponderosa Pine bears S54°W, 60.15 feet marked T2N R40E S15 BT.
- A 27" Ponderosa Pine bears N28°E, 64.88 with 50d spike on left side of tree, no blaze or scribing on tree, tree in fence line wrapped with wire.
- A 21" Ponderosa Pine bears N67°W, 83.38 feet marked T2N R40E S10 BT

I hereby certify that the above corner point was perpetuated as hereon described on April 29, 1992.

Witnesses: Jeff Petersen



**REGISTERED  
PROFESSIONAL  
LAND SURVEYOR**

OREGON  
JULY 10, 1984  
**DUANE I. GRIFFITH**  
644

I used a steel tape and magnetic compass in the establishment of new accessories. I used 20° East magnetic declination. The distances are to a 50d spike driven in the right side of the root crown. I attached a brass washer marked OPLS 644 to the BT blaze.

**UNION COUNTY  
SURVEYOR**

---

Date Received 6/10/92  
Date Filed 6/20/92  
By Greg Black  
File No. 040-1992R

**CERTIFIED RECORD OF LAND CORNER MONUMENTATION**

**HISTORY OF ORIGINAL CORNER ESTABLISHED:**

Corner originally established by Rufus S. Moore under GLO contract Number 382, dated March 23, 1881. Surveyor General record states:

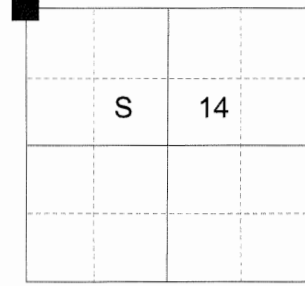
- Set post for cor. to secs. 10,11,14,15, from which:
- A Pine 16" diam bears N55°E, 62 lks.
- A Pine 40" diam bears N40°W, 20 lks.
- A Pine 14" diam bears S83°W, 22 lks.
- A Pine 9" diam bears S57°E, 35 lks.

Corner was re-established by James Hanley in 1984. Union County Survey record 5-85 states:  
Set 5/8" x 30" rebar at road P.I. with yellow plastic cap marked HANLEY ENGR PLS 1206 for cor. point and 5/8" x 30" rebars 50 ft. West and 40 ft. East. for references to cor.

Corner was perpetuated in 1992 by Duane Griffith. Union County Monumentation Record 040-1992R states: At found iron pin I replace the yellow cap with a 2" aluminum cap marked as shown, from which:

- A 21" Ponderosa Pine bears S54°W, 60.15 feet marked T2N R40E S15 BT.
- A 27" Ponderosa Pine bears N28°E, 64.88 with 50d spike on left side of tree, no blaze or scribing on tree, tree in fence line wrapped with wire.
- A 21" Ponderosa Pine bears N67°W, 83.38 feet marked T2N R40E S10 BT.

T 2 N R 40 E J-17



**DESCRIPTION OF CORNER EVIDENCE FOUND:**

Found a 5/8" rebar 6" below road surface.  
From which:

- A 5/8" rebar with yellow plastic cap bears WEST, a dist. of 50.00 feet.
- A 5/8" rebar with yellow plastic cap bears EAST, a dist. of 40.00 feet.
- A 26" Ponderosa Pine bears South 54° West, a dist. of 60.15 feet, alive and vigorous with healed blaze.
- A 32" Ponderosa Pine bears North 28° East, a dist. of 64.80, with BT tag attached. Falls in fence.
- A 25" Ponderosa Pine bears North 67° West, a dist. of 83.38 feet, alive and vigorous with healed blaze.

**DESCRIPTION OF MONUMENT AND ACCESSORIES I ESTABLISHED TO PERPETUATE THE ORIGINAL LOCATION OF THIS CORNER:**

At the found iron pin, I set a 2 1/2" aluminum cap on it, marked as shown below.  
From which:

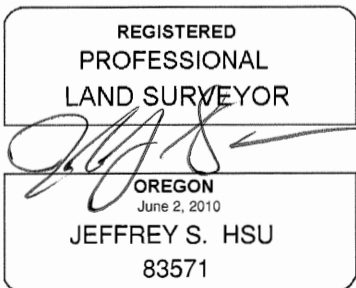
**NEW BEARING OBJECT:**

A 5/8" x 30" iron pin bears South 69° East, a distance of 42.00 feet, with a 1 1/2" aluminum cap marked UNION COUNTY SURVEYOR SE RP.

Corner falls on the North East edge of Yarrington Road.

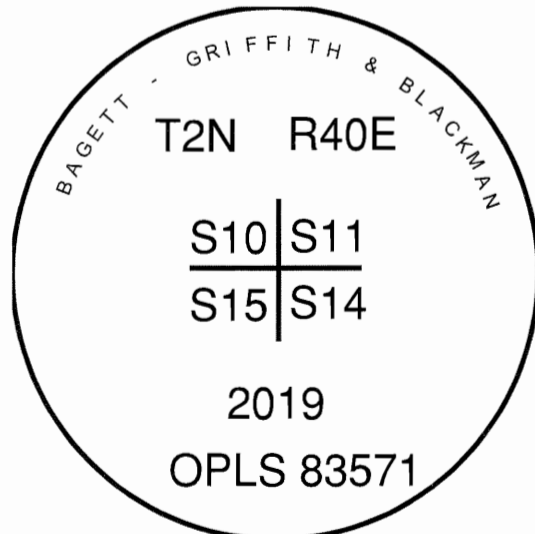
I hereby certify that the corner was perpetuated on January 25, 2019.

Witness: Kyle Tucker



Renewal Date: June 30, 2019

<b>UNION COUNTY SURVEYOR</b>	
Date Received	2/19/19
Date Filed	2/19/19
Filed By	<i>W. E. Galvin</i>
File Number	011-2019R



I used a steel tape and magnetic compass in the establishment of the new accessory. I used 13° East declination. Distances and bearings are to the center of the aluminum caps.

# HORIZONTAL CONTROL DATA

## UNION COUNTY, OREGON

### OREGON STATE PLANE, NORTH ZONE (3601)

STA NAME: 2019009

SECTION CORNER COMMON TO SECTIONS 10, 11, 14, AND 15

TWP. 2 N RGE. 40 E.

GEODETIC COORD: NAD 83(91)

DATE TIED: January 28, 2019

LAT: 45 ° 39 ' 38.61944 " N

SURVEYOR: RICK G. ROBINSON  
OPLS 2219

LONG: 117 ° 47 ' 16.88018 " W

FIRM: BAGETT, GRIFFITH, & BLACKMAN  
2006 ADAMS AVENUE  
LAGRANDE, OR 97850  
(541) 963-6092

SP. COOR: NAD 83(91)

N: 738627.095 INT FT.

E: 8895357.060 INT FT.

TYPE: GPS

THETA: 1 ° 55 ' 23.8680588 "

ORDER: SECOND CLASS: 1

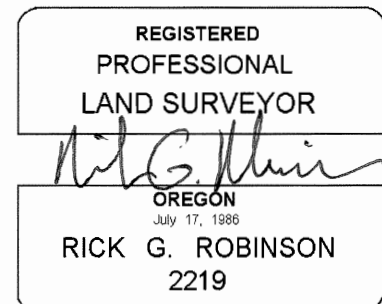
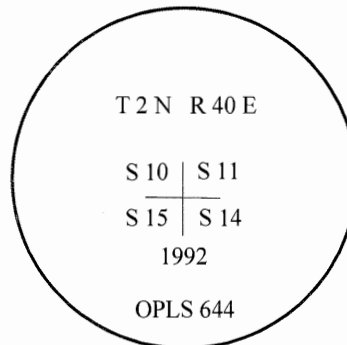
SCALE FACTOR: 0.9999314333

ELEV: 3372.51 US FT.

ELEV: DATUM: NGVD 29

COMMENTS:

5/8" iron pin with 2" aluminum cap  
marked as shown



Renewal Date: December 31, 2020

1 METER = 3.2808333333... US FEET = 39.37 INCHES

1 METER = 3.280839895 INT'L FEET OR 1 INCH = 2.54 CM

TO CALCULATE ELEVATION FACTOR ( IN THE NORTH AMERICAN CONTINENT)

DIVIDE 20,906,000 BY (20,906,000 + ELLIPSOID ELEV. IN FEET)