

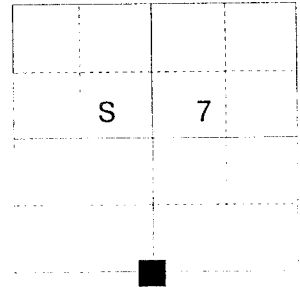
UNION COUNTY SURVEYOR

CERTIFIED RECORD OF LAND CORNER MONUMENTATION

**HISTORY OF ORIGINAL CORNER ESTABLISHMENT:**

Corner originally established by Rufus S. Moore under GLO contract Number 382, dated March 23, 1881. Surveyor General record states:  
Set post for 1/4 section corner, from which:  
A 34" Pine bears N 67° E, a distance of 59 lks.  
A 36" Pine bears S 72° E, a distance of 82 lks.

T 2 N R 40 E J-03



No record of further monumentation found in Union County survey records.

**DESCRIPTION OF CORNER EVIDENCE FOUND:**

NONE

See Survey Number 016-1998

**DESCRIPTION OF MONUMENT AND ACCESSORIES I ESTABLISHED**

**TO PERPETUATE THE ORIGINAL LOCATION OF THIS CORNER:**

At surveyed proportionate position, I set a 2 1/2"x30" aluminum pipe with aluminum cap marked as shown, 24 inches in the ground from which:

**NEW BEARING OBJECTS AND TREES:**

- A 19" Diameter Ponderosa Pine bears N 32° E, a distance of 31.33 feet, marked X BT.
- A 17" Diameter Ponderosa Pine bears S 85° E, a distance of 13.53 feet, marked 1/4 S18 BT .
- A 17" diameter Ponderosa Pine bears S 16° W, a distance of 25.75 feet, marked X BT.
- A 13" diameter Ponderosa Pine bears N 36° W, a distance of 35.81 feet, marked 1/4 S7 Bt.

I hereby certify that the corner was monumented on April 29, 1998.  
Witness: Rick Robinson, Greg Blackman Jr.

REGISTERED  
PROFESSIONAL  
LAND SURVEYOR

*Gregory T. Blackman*

OREGON  
JULY 13, 1973

**GREGORY T. BLACKMAN**  
991

Renewal Date: December, 31 1999

**UNION COUNTY  
SURVEYOR**

Date Received 5/15/98

Date Filed 8/29/98

Filed By R. Robinson, DCA, T1

File Number CA4-1998R

GRIFFITH & BLACKMAN

BAGETT

T 2 N R 40 E

S 7

1/4

S 18

1998

OPLS 991

I used a steel tape and magnetic compass in the establishment of the new accessories. I used 17° East declination, the distances are to a 60d spike driven into the right side of the root crown of the new bearing trees. A brass washer marked OPLS 991 is attached to the BT blaze of the new bearing trees.

# HORIZONTAL CONTROL DATA

## UNION COUNTY, OREGON

### OREGON STATE PLANE, NORTH ZONE (3601)

STA NAME: 2018040

1/4 SECTION CORNER COMMON TO SECTIONS 7 AND 18

TWP. 2 N RGE. 40 E.

GEODETIC COORD: NAD 83(91)

DATE TIED: December 7, 2018

LAT: 45 ° 39 ' 37.63180 " N

SURVEYOR: RICK G. ROBINSON  
OPLS 2219

LONG: 117 ° 51 ' 35.37201 " W

FIRM: BAGETT, GRIFFITH, & BLACKMAN  
2006 ADAMS AVENUE  
LAGRANDE, OR 97850  
(541) 963-6092

SP. COOR: NAD 83(91)

N: 737919.133 INT FT.

E: 8877012.025 INT FT.

TYPE: GPS

THETA: 1 ° 52 ' 20.5492682 "

ORDER: SECOND CLASS: 1

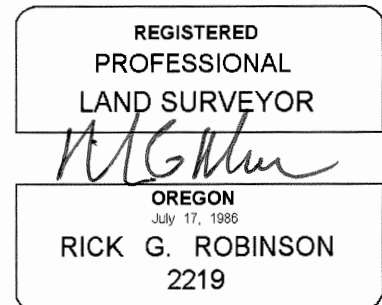
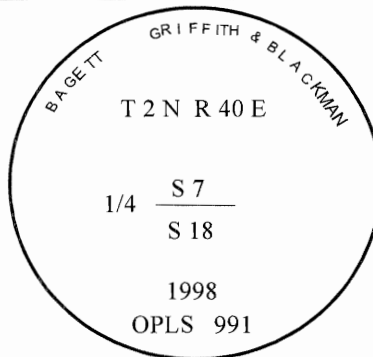
SCALE FACTOR: 0.9999313922

ELEV: 2924.52 US FT.

ELEV: DATUM: NGVD 29

**COMMENTS:**

2 1/2" aluminum pipe with 2 1/2" aluminum cap marked as shown, set in mound of stone.



Renewal Date: December 31, 2018

1 METER = 3.2808333333... US FEET = 39.37 INCHES

1 METER = 3.280839895 INT'L FEET OR 1 INCH = 2.54 CM

TO CALCULATE ELEVATION FACTOR ( IN THE NORTH AMERICAN CONTINENT)

DIVIDE 20,906,000 BY (20,906,000 + ELLIPSOID ELEV. IN FEET)