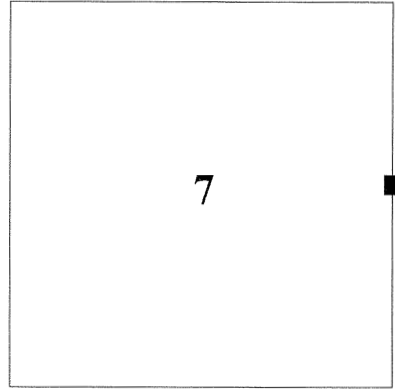


CERTIFIED RECORD OF LAND CORNER MONUMENTATION

History of original corner establishment:

Original corner set by Rufus S. Moore under contract No. 382 dated March 23, 1881, and approved March 21, 1882.
Record States:
Set post for 1/4 sec. cor.
From Which:
A pine, 32 ins. diam., bears S. 21° E., 60 lks. dist.
A pine, 42 ins. diam., bears N. 60° W., 17 lks. dist.

Township 2 North, Range 40 East
G-5

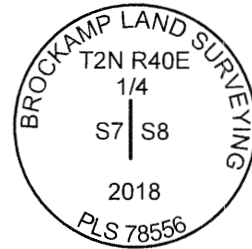


Subsequent survey:

None found

Description of evidence found:

None Found. This corner re-established by survey as defined in the 2009 Manual of Surveying Instructions.



Description of monument and accessories established to perpetuate the location of this corner.

At position determined by survey, I set a 2 ins. diam. aluminum cap, on a 5/8 ins. diam. x 30 ins long iron rod, marked as shown.

From which:

- A 5/8" x 30" long iron rod with yellow plastic cap marked "BROCKAMP LAND SURVEYING PLS 78556" bears N. 38° E., 24.0 ft. dist., in E-W fence.
- A 5/8" x 30" long iron rod with yellow plastic cap marked "BROCKAMP LAND SURVEYING PLS 78556" bears S. 42° E., 11.1 ft. dist., in E-W fence.
- A 5/8" x 30" long iron rod with yellow plastic cap marked "BROCKAMP LAND SURVEYING PLS 78556" bears S. 52° W., 11.6 ft. dist.
- A 5/8" x 30" long iron rod with yellow plastic cap marked "BROCKAMP LAND SURVEYING PLS 78556" bears N. 30° W., 20.6 ft. dist.

Corner position falls on mostly level ground in edge of hay field.

Bearings are made with a hand compass, magnetic declination = 15°E.

I hereby certify that the above corner point was perpetuated as herein described on 6/13/2018.

Witnessed by:
Matt Brockamp, LS
Haley Brockamp

REGISTERED
PROFESSIONAL
LAND SURVEYOR

OREGON
MAY 20, 2015
MATTHEW R. BROCKAMP
78556

Registration expires 12/31/2019

UNION COUNTY SURVEYOR	
Date Received	7/19/18
Date Filed	7/13/18
Filed By	<i>Haley Brockamp</i>
File Number	050-2018R



HORIZONTAL CONTROL DATA
UNION COUNTY, OREGON
OREGON STATE PLANE, NORTH ZONE (3601)

STA NAME: 2018041

1/4 SECTION CORNER COMMON TO SECTIONS 7 AND 8

TWP. 2 N RGE. 40 E.

GEODETIC COORD: NAD 83(91)

DATE TIED: December 7, 2018

LAT: 45 ° 40 ' 4.46595 " N

SURVEYOR: RICK G. ROBINSON
OPLS 2219

LONG: 117 ° 50 ' 57.57348 " W

FIRM: BAGETT, GRIFFITH, & BLACKMAN
2006 ADAMS AVENUE
LAGRANDE, OR 97850
(541) 963-6092

SP. COOR: NAD 83(91)

N: 740723.434 INT FT.

E: 8879605.937 INT FT.

TYPE: GPS

THETA: 1 ° 52 ' 47.3554574 "

ORDER: SECOND CLASS: 1

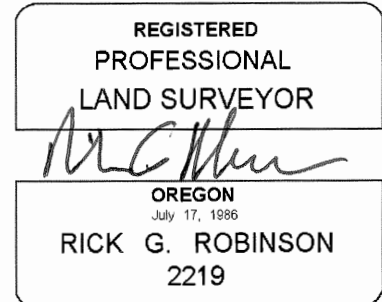
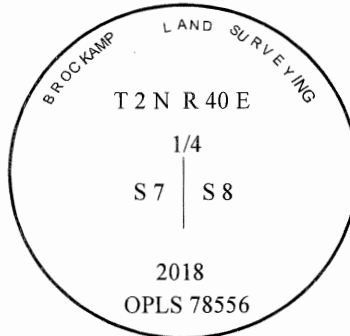
SCALE FACTOR: 0.9999325184

ELEV: 3198.94 US FT.

ELEV: DATUM: NGVD 29

COMMENTS:

5/8" iron pin with 2" aluminum cap
marked as shown.



Renewal Date: December 31, 2018

1 METER = 3.280833333... US FEET = 39.37 INCHES

1 METER = 3.280839895 INT'L FEET OR 1 INCH = 2.54 CM

TO CALCULATE ELEVATION FACTOR (IN THE NORTH AMERICAN CONTINENT)

DIVIDE 20,906,000 BY (20,906,000 + ELLIPSOID ELEV. IN FEET)