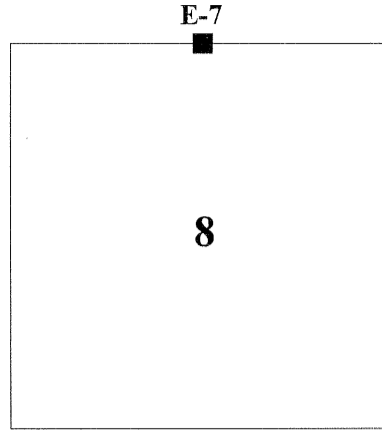


CERTIFIED RECORD OF LAND CORNER MONUMENTATION

History of original corner establishment:

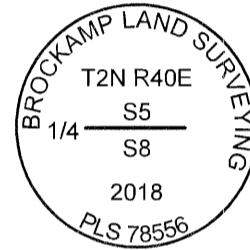
Original corner set by Rufus S. Moore under contract No. 382 dated March 23, 1881, and approved March 21, 1882.
 Record States:
 Set post for 1/4 sec. cor. at top of hill brs. N. & S.
 From Which:
 A pine, 14 ins. diam., bears N. 23° E., 96 lks. dist.
 A pine, 24 ins. diam., bears South, 34 lks. dist.

Township 2 North, Range 40 East



Subsequent survey:

None found



Description of evidence found:

Found a smooth 5/8 ins. diam. Iron Rod in a rock collar with a basalt stone marked 1/4 alongside.
 From which:
 A ponderosa pine cut high stump, 23 ins. diam., bears N. 23° E., 63.4 ft. dist., with visible scribes on an opened blaze.

Description of monument and accessories established to perpetuate the location of this corner.

At position of found iron rod, I set a 2 ins. diam. aluminum cap, on a 5/8 ins. diam. x 30 ins long iron rod, marked as shown.
 From which:
 A ponderosa pine, 10 ins. diam., bears N. 62° E., 44.9 ft. dist., marked "X BT" on a double blaze.
 A ponderosa pine, 5 ins. diam., bears S. 32° E., 33.8 ft. dist., marked "X BT" on a double blaze.
 A ponderosa pine, 13 ins. diam., bears S. 68° W., 35.1 ft. dist., marked "1/4 S8 BT" on a single blaze.
 A ponderosa pine, 14 ins. diam., bears N. 6° W., 62.9 ft. dist., marked "1/4 S5 BT" on a single blaze.

Corner position falls on edge of hill which bears N. & S.

Bearings are made with a hand compass, magnetic declination = 15°E.

I hereby certify that the above corner point was perpetuated as herein described on 5/18/2018.

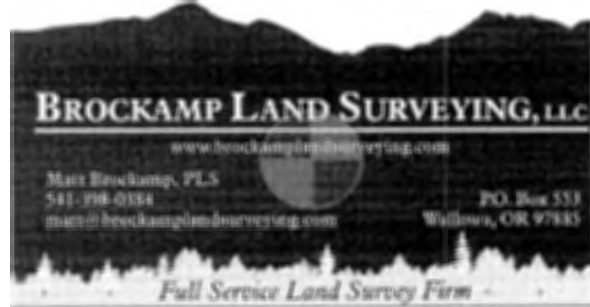
Witnessed by:
 Matt Brockamp, LS
 Austin Brockamp

**REGISTERED
 PROFESSIONAL
 LAND SURVEYOR**

(Signature)
OREGON
 MAY 20, 2015
 MATTHEW R. BROCKAMP
 78556

Registration expires 12/31/2019

UNION COUNTY SURVEYOR	
Date Received	7/19/18
Date Filed	9/13/18
Filed By	<i>(Signature)</i>
File Number	048-2018R



HORIZONTAL CONTROL DATA

UNION COUNTY, OREGON

OREGON STATE PLANE, NORTH ZONE (3601)

STA NAME: 2018043

1/4 SECTION CORNER COMMON TO SECTIONS 5 AND 8

TWP. 2 N RGE. 40 E.

GEODETIC COORD: NAD 83(91)

DATE TIED: December 11, 2018

LAT: 45 ° 40 ' 30.81854 " N

SURVEYOR: RICK G. ROBINSON
OPLS 2219

LONG: 117 ° 50 ' 19.86749 " W

FIRM: BAGETT, GRIFFITH, & BLACKMAN
2006 ADAMS AVENUE
LAGRANDE, OR 97850
(541) 963-6092

SP. COOR: NAD 83(91)

N: 743479.101 INT FT.

E: 8882194.170 INT FT.

TYPE: GPS

THETA: 1 ° 53 ' 14.0960142 "

ORDER: SECOND CLASS: 1

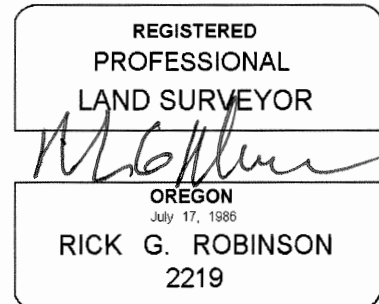
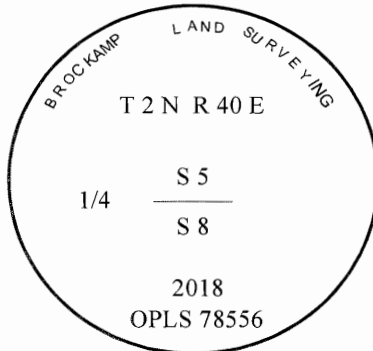
SCALE FACTOR: 0.9999336409

ELEV: 3007.91 US FT.

ELEV: DATUM: NGVD 29

COMMENTS:

5/8" iron pin with 2" aluminum cap
marked as shown.



Renewal Date: December 31, 2018

1 METER = 3.2808333333... US FEET = 39.37 INCHES

1 METER = 3.280839895 INT'L FEET OR 1 INCH = 2.54 CM

TO CALCULATE ELEVATION FACTOR (IN THE NORTH AMERICAN CONTINENT)

DIVIDE 20,906,000 BY (20,906,000 + ELLIPSOID ELEV. IN FEET)