

CERTIFIED RECORD OF LAND CORNER MONUMENTATION

History of original corner establishment:

Original corner set by Rufus S. Moore under contract No. 382 dated March 23, 1881, and approved March 21, 1882.

Record States:

Set post for sec. cor.

From Which:

A pine, 24 ins. diam., bears N. 45° E., 63 lks. dist.

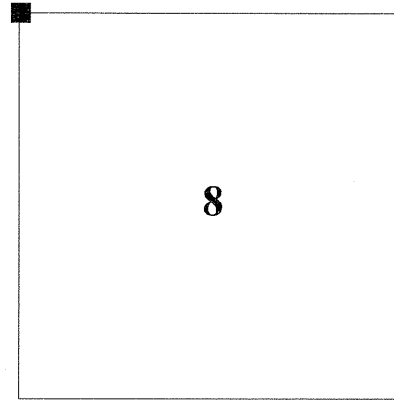
A pine, 40 ins. diam., bears N. 45° W., 7 lks. dist.

A pine, 30 ins. diam., bears S. 56° W., 11 lks. dist.

A pine, 26 ins. diam., bears S. 29° E., 46 lks. dist.

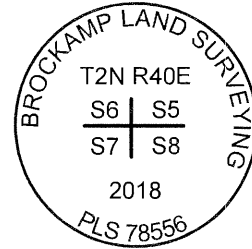
Township 2 North, Range 40 East

E-5



Subsequent survey:

None found



Description of evidence found:

None found. Corner re-established as defined in the 2009 Manual of Surveying Instructions.

Description of monument and accessories established to perpetuate the location of this corner.

At position determined by survey, I set a 2 ins. diam. aluminum cap, on a 5/8 ins. diam. x 30 ins long iron rod, marked as shown.

From which:

A 5/8" x 30" long iron rod with yellow plastic cap marked "BROCKAMP LAND SURVEYING PLS 78556" bears N. 44° E., 10.2 ft. dist.

A 5/8" x 30" long iron rod with yellow plastic cap marked "BROCKAMP LAND SURVEYING PLS 78556" bears S. 57° E., 7.9 ft. dist.

A 5/8" x 30" long iron rod with yellow plastic cap marked "BROCKAMP LAND SURVEYING PLS 78556" bears S. 51° W., 9.7 ft. dist.

A 5/8" x 30" long iron rod with yellow plastic cap marked "BROCKAMP LAND SURVEYING PLS 78556" bears N. 55° W., 13.5 ft. dist.

Corner position falls on mostly level ground in CRP field.

Bearings are made with a hand compass, magnetic declination = 15°E.

I hereby certify that the above corner point was perpetuated as herein described on 5/18/2018.

Witnessed by:

Matt Brockamp, LS

Austin Brockamp

**REGISTERED
PROFESSIONAL
LAND SURVEYOR**

OREGON
MAY 20, 2015
MATTHEW R. BROCKAMP
78556

Registration expires 12/31/2019

UNION COUNTY SURVEYOR	
Date Received	<u>7/19/18</u>
Date Filed	<u>9/13/18</u>
Filed By	<u>M. G. Miller</u>
File Number	<u>047-2018A</u>



HORIZONTAL CONTROL DATA
UNION COUNTY, OREGON
OREGON STATE PLANE, NORTH ZONE (3601)

STA NAME: 2018045

SECTION CORNER COMMON TO SECTIONS 5, 6, 7 AND 8

TWP. 2 N RGE. 40 E.

GEODETIC COORD: NAD 83(91)

DATE TIED: December 7, 2018

LAT: 45 ° 40 ' 30.59438 " N

SURVEYOR: RICK G. ROBINSON
OPLS 2219

LONG: 117 ° 50 ' 57.39423 " W

FIRM: BAGETT, GRIFFITH, & BLACKMAN
2006 ADAMS AVENUE
LAGRANDE, OR 97850
(541) 963-6092

SP. COOR: NAD 83(91)

N: 743368.832 INT FT.

E: 8879531.847 INT FT.

TYPE: GPS

THETA: 1 ° 52 ' 47.4825792 "

ORDER: SECOND CLASS: 1

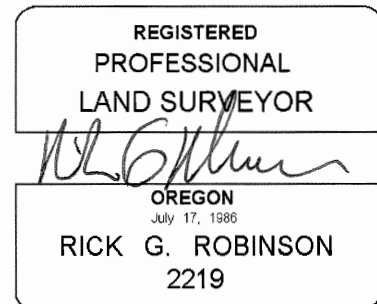
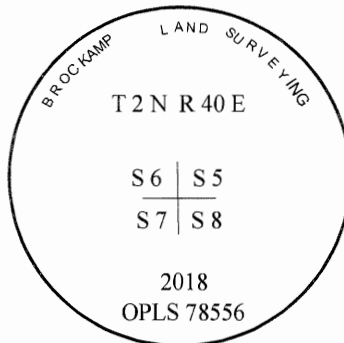
SCALE FACTOR: 0.9999336313

ELEV: 3133.79 US FT.

ELEV: DATUM: NGVD 29

COMMENTS:

5/8" iron pin with 2" aluminum cap
marked as shown.



Renewal Date: December 31, 2018

1 METER = 3.2808333333... US FEET = 39.37 INCHES

1 METER = 3.280839895 INT'L FEET OR 1 INCH = 2.54 CM

TO CALCULATE ELEVATION FACTOR (IN THE NORTH AMERICAN CONTINENT)

DIVIDE 20,906,000 BY (20,906,000 + ELLIPSOID ELEV. IN FEET)