

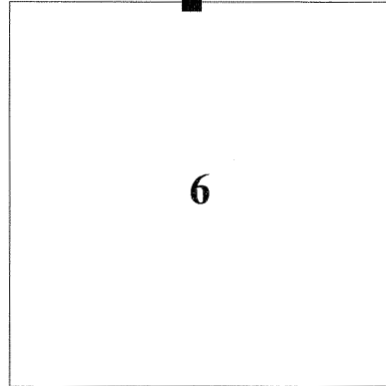
CERTIFIED RECORD OF LAND CORNER MONUMENTATION

History of original corner establishment:

Original corner set by Rufus S. Moore under contract No. 382 dated March 23, 1881, and approved March 21, 1882.
Record States:
Set basalt stone 12x8x6 in mound of stone for 1/4 sec. cor.

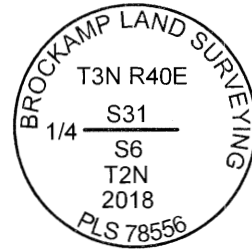
Township 2 North, Range 40 East

A-3



Subsequent survey:

Corner re-established by James H. Hambleton, LS 645, as shown on CS 003-1970.
Record States:
Made extensive search for this corner, but due to the steep rocky ground could find no evidence,. Therefore set a stone 23x8x6, marked 1/4 on North face and placed in a mound of stone.



Description of evidence found:

Found basalt stone 23x8x6, marked 1/4 on North face and placed in a mound of stone.

Description of monument and accessories established to perpetuate the location of this corner.

At position of found stone, I set a 2 ins. diam. aluminum cap, on a 5/8 ins. diam. x 30 ins. long iron rod, marked as shown.
From which:

- A basalt stone, 20x8x3 ins., bears N. 24 E., 18.8 ft. dist., marked "XBO".
- A 5/8" x 30" long iron rod with yellow plastic cap marked "BROCKAMP LAND SURVEYING PLS 78556" bears S. 65° E., 10.4 ft. dist.
- A ponderosa pine, 16 ins. diam., bears S. 10° W., 62.2 ft. dist., marked "1/4 S6 BT" on a single blaze.
- A 5/8" x 30" long iron rod with yellow plastic cap marked "BROCKAMP LAND SURVEYING PLS 78556" bears N. 78° W., 13.3 ft. dist.

Corner position falls on steep W. slope in rock slide infested with rattle snakes.

Bearings are made with a hand compass, magnetic declination = 15°E.

I hereby certify that the above corner point was perpetuated as herein described on 5/18/2018.

Witnessed by:
Matt Brockamp, LS
Austin Brockamp

REGISTERED
PROFESSIONAL
LAND SURVEYOR

OREGON
MAY 20, 2015
MATTHEW R. BROCKAMP
78556

Registration expires 12/31/2019

| | |
|----------------------------------|------------|
| UNION COUNTY SURVEYOR | |
| Date Received | 7/19/18 |
| Date Filed | 9/13/18 |
| Filed By | Ash Gilman |
| File Number | 040-2018R |



HORIZONTAL CONTROL DATA

UNION COUNTY, OREGON

OREGON STATE PLANE, NORTH ZONE (3601)

STA NAME: 2018042

1/4 SECTION CORNER COMMON TO SECTIONS 6 AND 31

TWP. 2 & 3N RGE. 40 E.

GEODETIC COORD: NAD 83(91)

DATE TIED: December 11, 2018

LAT: 45 ° 41 ' 22.14349 " N

SURVEYOR: RICK G. ROBINSON
OPLS 2219

LONG: 117 ° 51 ' 37.29087 " W

FIRM: BAGETT, GRIFFITH, & BLACKMAN
2006 ADAMS AVENUE
LAGRANDE, OR 97850
(541) 963-6092

SP. COOR: NAD 83(91)

N: 748494.458 INT FT.

E: 8876530.026 INT FT.

TYPE: GPS

THETA: 1 ° 52 ' 19.1884395 "

ORDER: SECOND CLASS: 1

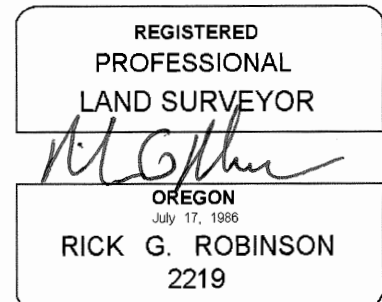
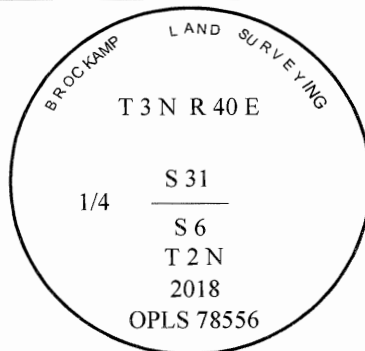
SCALE FACTOR: 0.9999358742

ELEV: 2699.77 US FT.

ELEV: DATUM: NGVD 29

COMMENTS:

5/8" iron pin with 2" aluminum cap
marked as shown.



Renewal Date: December 31, 2018

1 METER = 3.2808333333... US FEET = 39.37 INCHES

1 METER = 3.280839895 INT'L FEET OR 1 INCH = 2.54 CM

TO CALCULATE ELEVATION FACTOR (IN THE NORTH AMERICAN CONTINENT)

DIVIDE 20,906,000 BY (20,906,000 + ELLIPSOID ELEV. IN FEET)