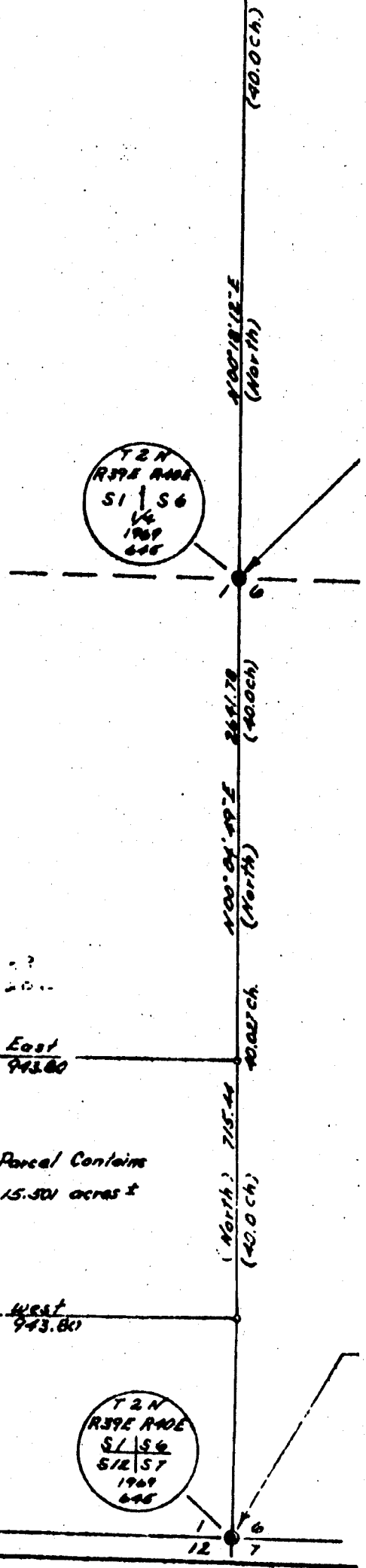


INDEX FILE No. ~~177-83R~~ 5

Found Section corner and one bearing tree stump, as identified by G.L.O. notes. (T3N R39E)

RECORD OF SURVEY PLAT
SURVEY of SECTION LINE
Between Sections 1 & 6, T2N, R39 & 40E
Surveyed JUNE 17 & 18, 1969 Scale 1" = 400'
FOR MARVIN STANLEY

Meridian by Solar Observation



UNION COUNTY SURVEYOR	
Date Received	_____
Date Filed	_____
By	_____
File No.	177-83R

REGISTERED
ORIGINAL
LAPID
James H. Hambley
9-9-69
JULY 17, 1969
JAMES H. HAMBLEY
645

Retracement of Range Line Between Sections 1 and 6
T. 2 N., R. 39 & 40 E., N.M.
Union County, Oregon

Chains

This is a retracement survey of the Range Line between sections 1 and 6, T 2 N, R 39 and 40 E, W., Union County Oregon as originally surveyed by Rufus S. Moore, Deputy Surveyor under Contract No. 382, dated March 23, 1981.

After making an extensive search in the area of the 1/4 corner between sections 1 and 6, T 2 N, R 39 & 40 E, W., I found the 1/4 corner accessories as described in the original field notes, being a tamarack 24 ins. diameter which bears N 50 E, 16 lks. distance, now being only a stump with BT scribed on the face,
A tamarack 40 ins. dia. which bears N 45 W, 50 lks. dist, now being a badly rotted stump that checks to the original notes.

To restore the 1/4 corner for future use, I set a 1" x 30" pipe with cap in a mound of stone, from the existing bearing trees, stamped:

T 2 N
R 39 E R 40 E
S 1 S 6
1/4
1969
645

From which I set two new bearing trees being:
A Pine 10" dia. which bears N 40 00 W, 10 lks. dist. scribed S 1 1/4 ET.
A Fir 11" dia. which bears N 36 30 E, 28 lks. dist. scribed S 1 1/4 BT.

Thence by backsighting on the section corner common to sections 31, 36, 1, & 6 of T 1 & 2 N, R 39 & 40 E, W. of which was visible on the distant ridge top, I then plunged the line south on a bearing of S 00° 18' 12" W determined by a solar observation.

40.027

Set a temporary point opposite of a small circle of stones that looked very suspicious. I then made an extensive search of the area and found additional evidence of corner accessories as described in the original field notes, being two badly rotted stumps:
A pine stump about 22" dia. bears S 42 E, 89 lks. from the circle of stone, with chine of rotted wood showing evidence of scribing.
A Pine stump about 26" dia. bears S 59 W, 28 lks. from the circle of stone being very badly rotted.

Thus accepting this evidence as the original corner and to restore the section corner for future use, I set a 1" x 30" pipe with cap in a mound of stone, from the existing bearing trees, stamped:

T 2 N
R 39 E R 40 E
S 1 S 6
S 12 S 7
1969
645

From which I set four new bearing trees being:
A Pine 5" dia. which bears S 80 W, 15.3 lks, scribed T 2 N, R 39 E, S 12 BT.
A Pine 5" dia. which bears N 35 N, 32.9 lks, scribed T 2 N, R 39 E, S 1 BT.
A Pine 7" dia. which bears N 57 E, 16.8 lks, scribed T 2 N, R 40 E, S 6 BT.
A Pine 5" dia. which bears S 38 E, 87.0 lks, scribed T 2 N, R 40 E, S 7 BT.

SEARCHED
INDEXED
SERIALIZED
FILED
MAY 9 1969
JAMES H. HAMBLETON
645

UNION COUNTY SURVEYOR

Date Received _____

Date Filed _____

By _____

File No. 177-83R

REFER TO SURVEY 24-70

(T2N R40E)

With the true section corner established at a point being 15.4 lks. east of my temporary point; hence I made the necessary adjustment so that the true line between the section corner common to 1, 12 & 6, 7, T 2 N, R 39 & 40 E and the 1/4 corner common to sections 1 and 6, T 2 N, R 39 & 40 E, W. bears N 00° 04' 49" E a distance of 40.087 chains, thus completing this survey.

LAND SURVEYOR

James H. Hambleton
P. P. - 09

JULY 10 1964
JAMES H. HAMBLETON
645

UNION COUNTY SURVEYOR	
Date Received	_____
Date Filed	_____
By	_____
File No.	<u>177 - 83R</u>

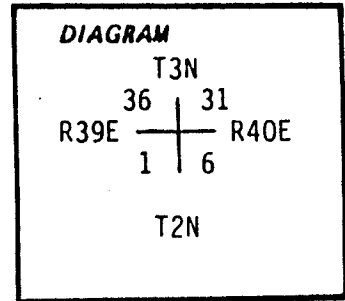
CERTIFIED RECORD OF LAND CORNER MONUMENTATION

A-1

History of original corner establishment:

Original survey by Rufus Moore in 1881 states:

- Set post for Cor. to Townships 2, 3 North, Ranges 39 and 40 East on top of hill bears E & W, from which
- A Pine 12 ins. diam. bears N39°E 26 lks. dist.
- A Pine 6 ins. diam. bears N22°W 59 lks. dist.,
- A Pine 14 ins. diam. bears S55°W 28 lks. dist.,
- A Pine 24 ins. diam. bears S27°E 42 lks. dist.



Description of corner evidence found:

Found the original SW bearing tree, an 18" Ponderosa Pine stump, with previously opened and burnt double blaze, no markings visible.

No other physical evidence of the original corner was found.

The original SW bearing tree is located in an E-W fence line.

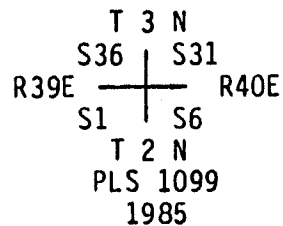


Description of monument and accessories I established to perpetuate the original location of this corner:

We establish the original corner point at the record bearing and distance from the blazed face of the original SW bearing tree. At the corner point, we set a 2"x30" aluminum pipe, 26" in the ground, with aluminum cap, marked:

From which we mark the following new bearing trees:

- A 14" Ponderosa Pine, scribed "T3N R40E S31 BT" on a double blaze, bears N35°E 84.7 feet,
 - An 18" Ponderosa Pine, scribed "T2N R40E S6 BT" on a double blaze bears S22°E 114.1 feet,
 - A 14" Ponderosa Pine, scribed "T2N R39E S1 BT" on a double blaze bears S70°W 38.5 feet,
 - and a 14" Ponderosa Pine, scribed "T3N R39E S36 BT" on a double blaze bears N13°W 72.0 feet.
- Attached brass washer marked "LS 1099" to lower blaze of new BT's.



Magnetic compass (20° East Declination)
Steel Tape

Corner is located beneath a N-S power line, 12' north of a N-W fence corner and 3' East of a N-S fence.

May 3, 1985

Gary Langlitz LS1099
Greg Orton

Office of..... County of.....
State of..... I hereby certify that the within instrument was filed in this office
for record on the..... day of....., 19.....
..... by
(COUNTY OFFICIAL) (DEPUTY)

UNION COUNTY SURVIVOR	
Date Received	<u>6-3-85</u>
Date Filed	<u>6-24-85</u>
By	<u>H.L.P.</u>
File No.	<u>36-85 R</u>

HORIZONTAL CONTROL DATA

UNION COUNTY, OREGON

OREGON STATE PLANE, NORTH ZONE (3601)

STA NAME: 2017014

SECTION CORNER COMMON TO SECTIONS 1, 6, 31 AND 36

TWP. 2 & 3N RGE. 39 & 40 E. GEODETIC COORD: NAD 83(91)

DATE TIED: June 28, 2017 LAT: 45 ° 41 ' 22.07508 " N

SURVEYOR: RICK G. ROBINSON OPLS 2219 LONG: 117 ° 52 ' 11.73153 " W

FIRM: BAGETT, GRIFFITH, & BLACKMAN SP. COOR: NAD 83(91)
 2006 ADAMS AVENUE
 LAGRANDE, OR 97850 N: 748407.816 INT FT.
 (541) 963-6092 E: 8874086.780 INT FT.

TYPE: GPS THETA: 1 ° 51 ' 54.7636056 "

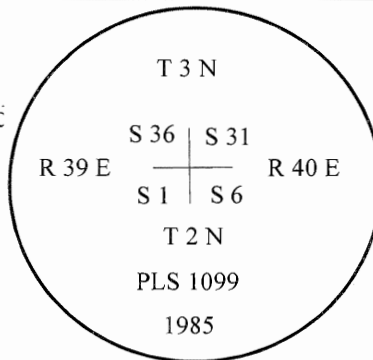
ORDER: SECOND CLASS: 1 SCALE FACTOR: 0.9999358712

ELEV: 2874.63 US FT.

ELEV: DATUM: NGVD 29

COMMENTS:

2" aluminum pipe with aluminum cap marked as shown, beneath a North-South power line



REGISTERED
PROFESSIONAL
LAND SURVEYOR

Rick G. Robinson

OREGON
July 17, 1986
RICK G. ROBINSON
2219

Renewal Date: December 31, 2018

1 METER = 3.2808333333... US FEET = 39.37 INCHES

1 METER = 3.280839895 INT'L FEET OR 1 INCH = 2.54 CM

TO CALCULATE ELEVATION FACTOR (IN THE NORTH AMERICAN CONTINENT)

DIVIDE 20,906,000 BY (20,906,000 + ELLIPSOID ELEV. IN FEET)