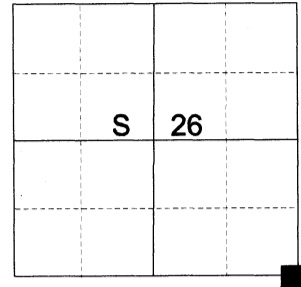


CERTIFIED RECORD OF LAND CORNER MONUMENTATION

HISTORY OF ORIGINAL CORNER ESTABLISHED:

Corner established under GLO joint contract number 382 executed by Rufus S. Moore dated March 23rd 1881. Surveyor General field notes state: Set Basalt stone 20 x 9 x 6 and dug pits as per instructions for cor. to secs. 25, 26, 35, & 36, from which:
A Pine 36 in. diam. bears N74°E 101 lks. dist.

T 2 N R 39 E V-21



In 1916, Oregon Washington Navigation and Railroad Track Map indicates that this corner was not found.

DESCRIPTION OF CORNER EVIDENCE FOUND:

None.

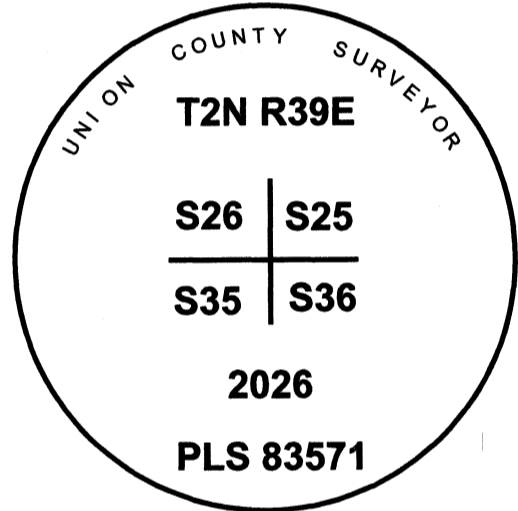
SEE SURVEY NUMBER 028-2026

DESCRIPTION OF MONUMENT AND ACCESSORIES I ESTABLISHED TO MONUMENT THE ORIGINAL LOCATION OF THIS CORNER:

At proportionate position, I set a 2 1/2" x 30" aluminum pipe, 27" in the ground, with 3" aluminum cap marked as shown in a 2 ft. diam. collar of stone, from which:

NEW BEARING OBJECTS:

- A 5/8" x 15" iron pin bears North 48°10' East, a dist. of 30.65 ft., marked UNION COUNTY SURVEYOR NE RP.
- A 12" Ponderosa Pine bears South 20°47 East, a dist. of 38.85 ft., marked T2N R39E S36 BT.
- A 7" Ponderosa Pine bears South 56°51 West, a dist. of 33.05 ft., marked T2N R39E S35 BT.
- A 16" Ponderosa Pine bears North 74°28 West, a dist. of 20.05 ft., marked T2N R39E S26 BT.



I hereby certify that the corner was monumented on June 18th, 2026.

Witness: Kyle Tucker

I use a tape and Leica GS 18X GPS with RTK in the establishment of the new bearing objects. Basis of Bearing is as per OCRS La Grande and measured to a brass washer labeled "OPLS 83571" in the BT blaze at the base of the tree or the center of the aluminum cap. Distances are to a 60D nail in the right side of the base of the center of the tree or the center of

REGISTERED
PROFESSIONAL
LAND SURVEYOR



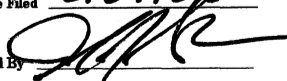
OREGON
June 2, 2010
JEFFREY S. HSU
83571

Renewal Date: June 30, 2027

UNION COUNTY
SURVEYOR

Date Received 6/24/26

Date Filed 6/24/26

Filed By 

File Number 014-202612