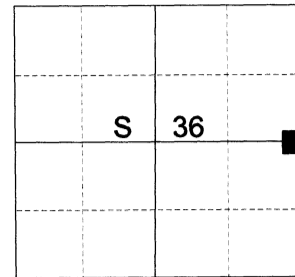


CERTIFIED RECORD OF LAND CORNER MONUMENTATION

HISTORY OF ORIGINAL CORNER ESTABLISHED:

Corner originally established under GLO joint contract number 382 executed by Rufus S. Moore dated March 23rd 1881. Surveyor General field notes state:
Set Basalt Stone 12 x 10 x 8 and dug pits as per instructions for 1/4 sec. cor.

T 2 N R 39 E X-25



Road Petition 480 indicates county road corners at this corner.

DESCRIPTION OF CORNER EVIDENCE FOUND:

None found. Hardy Road runs North and East from this corner. Held the apparent point of intersection of road as evidenced by constructed centerline and right of way fences.

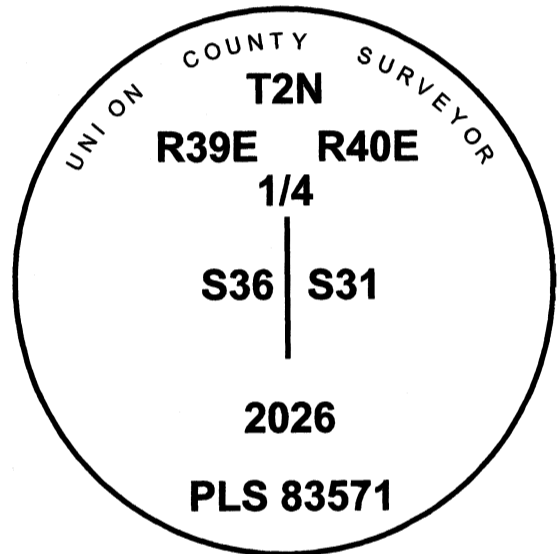
SEE SURVEY NUMBER 028-2026

DESCRIPTION OF MONUMENT AND ACCESSORIES I ESTABLISHED TO MONUMENT THE ORIGINAL LOCATION OF THIS CORNER:

At the apparent point of intersection, I set a 2 1/2" x 30" aluminum pipe, 36" in the ground, with 3" aluminum cap marked as shown, from which:

NEW BEARING OBJECTS:

- A 5/8" x 30" iron pin bears North 47°27' East, a dist. of 60.55 ft., with 1 1/2" aluminum cap marked UNION COUNTY SURVEYOR NE RP.
- A 5/8" x 30" iron pin bears South 61°21' East, a dist. of 48.62 ft., with 1 1/2" aluminum cap marked UNION COUNTY SURVEYOR SE RP.
- A 5/8" x 30" iron pin bears South 17°24' West, a dist. of 26.13 ft., with 1 1/2" aluminum cap marked UNION COUNTY SURVEYOR SW RP.
- A 5/8" x 30" iron pin bears North 29°10' West, a dist. of 29.53 ft., with 1 1/2" aluminum cap marked UNION COUNTY SURVEYOR NW RP.



I hereby certify that the corner was monumented on June 9th, 2026.

Witness: Kyle Tucker

REGISTERED
PROFESSIONAL
LAND SURVEYOR



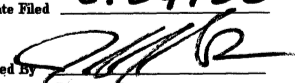
OREGON
June 2, 2010
JEFFREY S. HSU
83571

Renewal Date: June 30, 2027

**UNION COUNTY
SURVEYOR**

Date Received 6/24/26

Date Filed 6/24/26

Filed By 

File Number 018-2026R

I use a Leica GS 18I with RTK in the establishment of the new bearing objects. Basis of Bearing is as per OCRS La Grande. Bearings and distances are measured to the center of the aluminum caps.