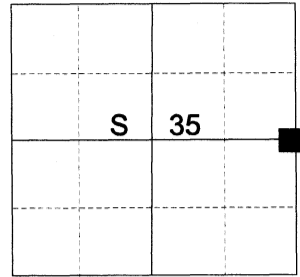


CERTIFIED RECORD OF LAND CORNER MONUMENTATION

HISTORY OF ORIGINAL CORNER ESTABLISHED:

Corner established under GLO joint contract number 382 executed by Rufus S. Moore dated March 23rd 1881. Surveyor General field notes state: Set Basalt Stone 20 x 10 x 6 and dug pits as per instructions for 1/4 sec. cor.

T 2 N R 39 E X-21



DESCRIPTION OF CORNER EVIDENCE FOUND:

None. A prominent North/South running fenceline runs through this corner. An older downed fence runs to the West, with remnants of an older fence running to the East at a position approximately 80 feet North. Multiple stones of called size but no discernible marks found. I accept the intersection of the West fenceline and the North/South running fenceline as best available evidence of the original corner position.

SEE SURVEY NUMBER 028-2026

DESCRIPTION OF MONUMENT AND ACCESSORIES I ESTABLISHED TO MONUMENT THE ORIGINAL LOCATION OF THIS CORNER:

At position of found fence corner, I set a 2 1/2" x 30" aluminum pipe, 28" in the ground and 2 ft. diam. collar of stone, with aluminum cap marked as shown, from which:

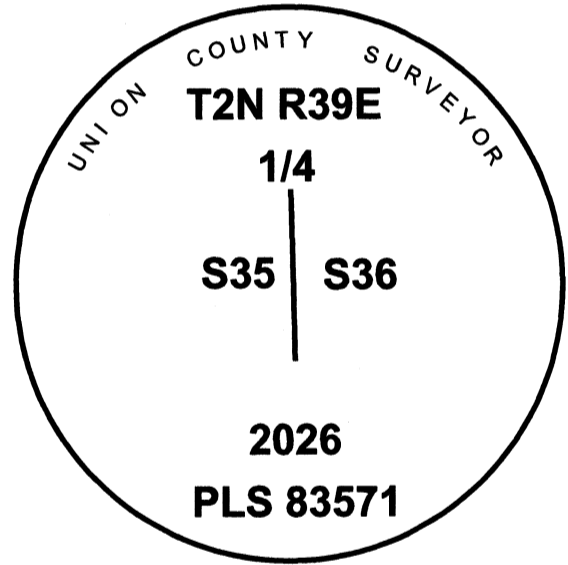
NEW BEARING OBJECTS:

A 5/8" x 15" iron pin bears North 54°29' East, a dist. of 19.51 ft., with 1 1/2" aluminum cap marked UNION COUNTY SURVEYOR NE RP.

A 5/8" x 15" iron pin bears South 39°04' East, a dist. of 22.01 ft., with 1 1/2" aluminum cap marked UNION COUNTY SURVEYOR SE RP.

A 5/8" x 15" iron pin bears South 47°53' West, a dist. of 31.85 ft., with 1 1/2" aluminum cap marked UNION COUNTY SURVEYOR SW RP.

A 5/8" x 15" iron pin bears North 54°30' West, a dist. of 25.60 ft., with 1 1/2" aluminum cap marked UNION COUNTY SURVEYOR NW RP.



REGISTERED
PROFESSIONAL
LAND SURVEYOR

[Signature]
OREGON
June 2, 2010
JEFFREY S. HSU
83571

Renewal Date: June 30, 2027

I hereby certify that the corner was monumented on June 17th, 2026.

Witness: Kyle Tucker

I use a Leica GS 18XI with RTK in the establishment of the new bearing objects. Basis of Bearing is as per OCRS La Grande. Bearings and distances are measured to the center of the aluminum caps. of the tree.

UNION COUNTY
SURVEYOR
Date Received 6/24/26
Date Filed 6/24/26
Filed By *[Signature]*
File Number 017-2026R