

CERTIFIED RECORD OF LAND CORNER MONUMENTATION

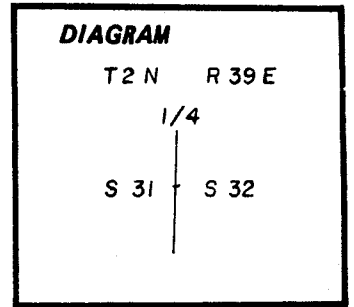
X-5

History of original corner establishment:

Corner originally set in 1881 by Rufus S. Moore under Government Contract No. 382. Surveyor Genral Notes state:

Set post for 1/4 section corner from which:

A tamarack 20" diameter bears N 30° W, 30 links distant
A fir 12" diameter bears S 74° E, 26 links distant



No record of subsequent survey found in record

Description of corner evidence found:

None.

See survey number 1-81 as recorded in the office of the Union County Surveyor

Description of monument and accessories I established to perpetuate the original location of this corner:

At single proportionate distance I set a 1" x 30" galvanized iron pipe with brass cap marked as shown, 6 inches below the road surface, from which:

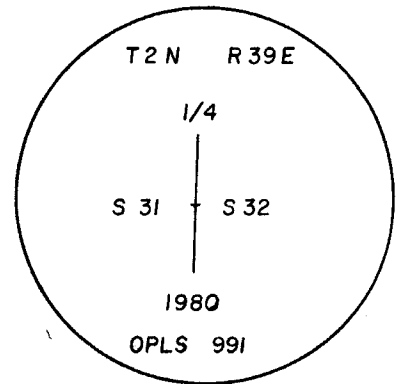
New BTs:

A 19" tamarack bears N 75° W, 67.2 ft marked 1/4 S31 BT
A 23" fir bears N 63° E, 62.6 ft marked 1/4 S32 BT.

**REGISTERED
PROFESSIONAL
LAND SURVEYOR**

Gregory T. Blackman

**OREGON
JULY 13, 1973
GREGORY T. BLACKMAN
991**



I used a steel tape and a magnetic compass with 20° E declination.
I set a brass washer marked OPLS 991 at the BT blaze.

Office of..... County of.....
State of..... I hereby certify that the within instrument was filed in this office
for record on the..... day of....., 19.....
..... by
(COUNTY OFFICIAL) (DEPUTY)

**UNION COUNTY
SURVEYOR**

Date Received _____
Date Filed _____ ☆ GPO-798-276
By _____
File No. 299-83R

HORIZONTAL CONTROL DATA

UNION COUNTY, OREGON

OREGON STATE PLANE, NORTH ZONE (3601)

STA NAME: 2018028

1/4 SECTION CORNER COMMON TO SECTIONS 31 AND 32

TWP. 2 N RGE. 39 E.

GEODETIC COORD: NAD 83(91)

DATE TIED: August 29, 2018

LAT: 45 ° 36 ' 32.71785 " N

SURVEYOR: RICK G. ROBINSON
OPLS 2219

LONG: 117 ° 58 ' 24.22374 " W

FIRM: BAGETT, GRIFFITH, & BLACKMAN
2006 ADAMS AVENUE
LAGRANDE, OR 97850
(541) 963-6092

SP. COOR: NAD 83(91)

N: 718271.252 INT FT.

E: 8848575.243 INT FT.

TYPE: GPS

THETA: 1 ° 47 ' 30.5973363 "

ORDER: SECOND CLASS: 1

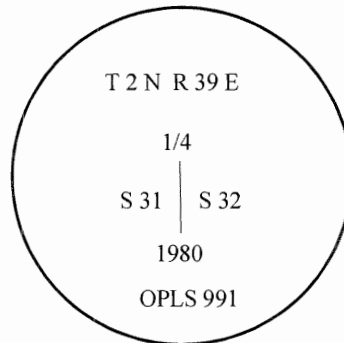
SCALE FACTOR: 0.9999240945

ELEV: 3172.43 US FT.

ELEV: DATUM: NGVD 29

COMMENTS:

2 1/2" brass cap on 1" iron pipe set
in roadway, 10" below road surface, with
cap being marked as shown.



REGISTERED
PROFESSIONAL
LAND SURVEYOR

Rick G. Robinson
OREGON
July 17, 1986
RICK G. ROBINSON
2219

Renewal Date: December 31, 2018

1 METER = 3.2808333333... US FEET = 39.37 INCHES

1 METER = 3.280839895 INT'L FEET OR 1 INCH = 2.54 CM

TO CALCULATE ELEVATION FACTOR (IN THE NORTH AMERICAN CONTINENT)

DIVIDE 20,906,000 BY (20,906,000 + ELLIPSOID ELEV. IN FEET)

CERTIFIED RECORD OF LAND CORNER MONUMENTATION

HISTORY OF ORIGINAL CORNER ESTABLISHED:

Corner originally established by Rufus S. Moore under GLO contract number 382 dated March 23, 1881. Surveyor General field notes state:

Set post for 1/4 sec. cor. from which:

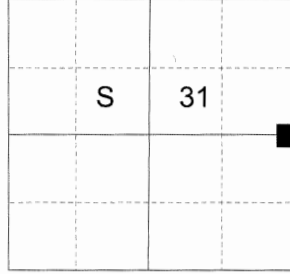
- A tamarack 20 ins diam bears N 30° W 30 lks dist
- A fir 12 ins diam bears S 74° E 26 lks dist

Corner monumented by Gregory T. Blackman in Survey Number 1-81. Union County Monumentation record 299-83R states:

At single proportionate distance I set a 1"x30" galvanized iron pipe with brass cap marked as shown, 6" below the road surface, from which:

- New BTs:
- A 19" tamarack bears N 75° W, 67.2 ft marked ¼ S31 BT
- A 23" fir bears N 63° E, 62.6 ft marked ¼ S32 BT.

T 2 N R 39 E X-5



DESCRIPTION OF CORNER EVIDENCE FOUND:

Found a 2½" brass cap marked as shown 10" under the road surface from which:

- A 28" stump 32" tall bears North 63° East a dist. of 62.60 ft., rotting with "BT" scribes visible.
- A 23" Western Larch bears North 75° West a dist. of 67.20 ft., alive and vigorous with healed blaze.

Cap falls in the middle of Southwest half of the roadway.

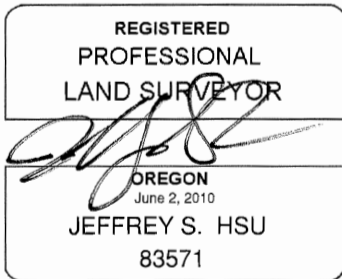
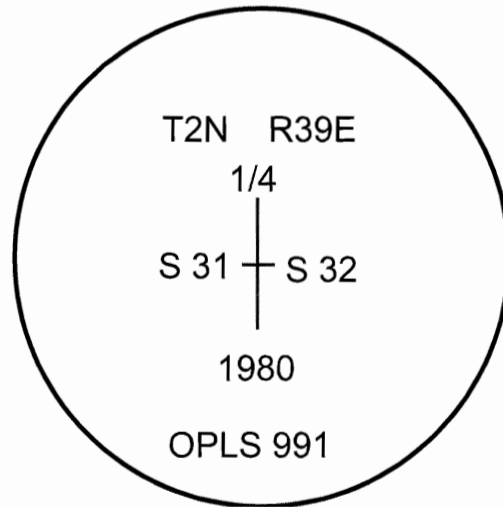
DESCRIPTION OF MONUMENT AND ACCESSORIES I ESTABLISHED TO PERPETUATE THE ORIGINAL LOCATION OF THIS CORNER:

From the brass cap monument:

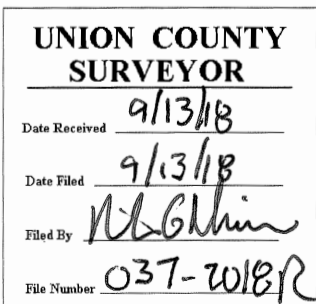
NEW BEARING TREES:

- A 6" White fir bears North 85° East a dist. of 22.40 ft., marked "1/4 S32 BT".
- A 6" White fir bears South 14° East a dist. of 34.65 ft., marked "1/4 S32 BT"
- A 7" White fir bears South 43° West a dist. of 31.35 ft., marked "1/4 S31 BT".

I hereby certify that the corner was perpetuated on August 29, 2018.
Witness: Kyle A. Tucker, Ryan Skeen



Renewal Date: June 30, 2019



I used a steel tape and magnetic compass in the establishment of the new accessories. I used 13° East declination. The distances are to a 60d spike driven into the right side of the root crown of the bearing trees. A brass washer marked OPLS 83571 is attached to the BT blaze of the new bearing trees.