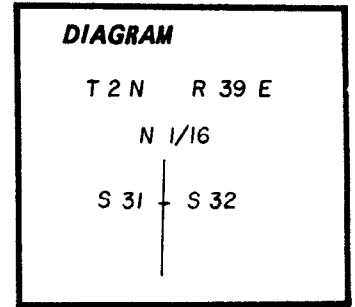


CERTIFIED RECORD OF LAND CORNER MONUMENTATION

W-5

History of original corner establishment:

Corner not previously set



Description of corner evidence found:

Corner not previously set

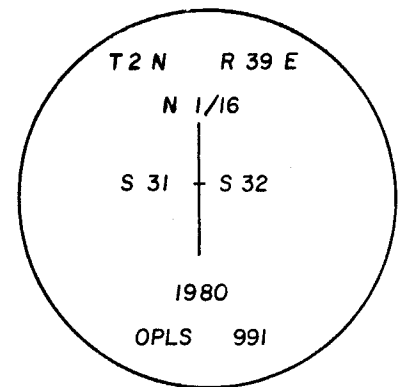
See survey number 1-81 as recorded in the office of the Union County Surveyor.

Description of monument and accessories I established to perpetuate the original location of this corner:

At proportionate distance I set a 1" x 30" pipe with brass cap marked as shown 26" in the ground.

New BTs

- A 12" red fir bears S 55° E, 34.4 ft marked N 1/16 S32 Bt
- A 14" pine bears S 28° W, 17.0 ft marked N 1/16 S31 BT



**REGISTERED
PROFESSIONAL
LAND SURVEYOR**

Gregory T. Blackman

OREGON
JULY 13, 1973
GREGORY T. BLACKMAN
991

I used a steel tape and magnetic compass with 20° E declination
I set a brass washer marked OPLS 991 at the BT blaze.

Office of..... County of.....
 State of....., I hereby certify that the within instrument was filed in this office
 for record on the..... day of....., 19.....

..... by

(COUNTY OFFICIAL) (DEPUTY)

**UNION COUNTY
SURVEYOR**

Date Received _____

Date Filed _____ ☆ GPO—788-276

By _____

File No. 298-83R

CERTIFIED RECORD OF LAND CORNER MONUMENTATION

HISTORY OF ORIGINAL CORNER ESTABLISHED:

Corner originally established by Gregory T Blackman in Survey Number 1-81. Union County monumentation record 298-83R states:

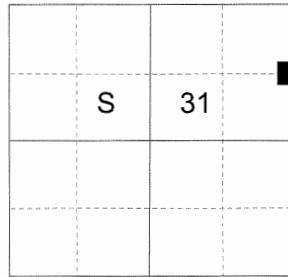
At proportionate distance I set a 1"x30" pipe with brass cap marked as shown 26" in the ground.

New BTs

A 12" red fir bears S 55° E, 34.4 ft marked N 1/16 S32 Bt

A 14" pine bears S 28° W, 17.0 ft marked N1/16 S31 BT

T 2 N R 39 E W-5



DESCRIPTION OF CORNER EVIDENCE FOUND:

Found a 1" galvanized iron pipe 2" above ground with 2½" brass cap marked as shown, from which:

A Douglas fir bears South 55° East a dist. of 34.40 ft., alive and vigorous with healed blaze.

A pine stump 14" tall bears South 28° West a dist. of 17.00 ft., dead with the B.T. scribes visible on opened blaze.

DESCRIPTION OF MONUMENT AND ACCESSORIES I ESTABLISHED TO PERPETUATE THE ORIGINAL LOCATION OF THIS CORNER:

From the iron pipe monument:

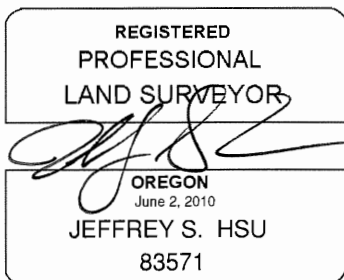
NEW BEARING TREES:

A 4" Ponderosa pine bears North 72° West a dist. of 18.10 ft., marked "X BT".

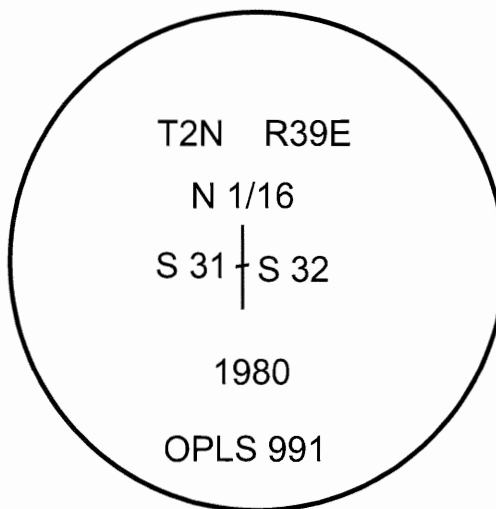
Set a steel post approximately 1 ft from the monument.

I hereby certify that the corner was perpetuated on August 29, 2018.

Witness: Kyle A. Tucker, Ryan Skeen



Renewal Date: June 30, 2019



UNION COUNTY SURVEYOR

Date Received 9/13/18

Date Filed 9/13/18

Filed By [Signature]

File Number 039-2018

I used a steel tape and magnetic compass in the establishment of the new accessories. I used 13° East declination. The distances are to a 60d spike driven into the right side of the root crown of the bearing trees. A brass washer marked OPLS 83571 is attached to the BT blaze of the new bearing trees.