

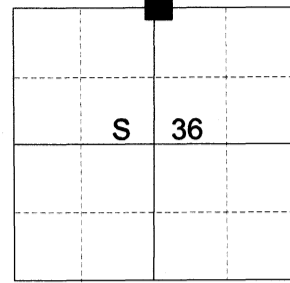
CERTIFIED RECORD OF LAND CORNER MONUMENTATION

HISTORY OF ORIGINAL CORNER ESTABLISHED:

Corner originally established under GLO joint contract number 382 executed by Rufus S. Moore dated March 23rd 1881. Surveyor General field notes state:

Set Basalt Stone 12 x 12 x 6 and dug pits as per instructions for 1/4 sec. cor. from which:
A Pine 15 in. diam. bears S66°W 163 lks dist.

T 2 N R 39 E V-23



DESCRIPTION OF CORNER EVIDENCE FOUND:

Found a rock jack fence corner to North, East, and West bearing fence lines with remnants of barbed wire the pattern of which dates to the early 1900's. Many stones of called size exist but no marks could be found. Land owners on either side of the fences attest to this corner being locally known as the "bearing tree corner". Land owner to the South attests he thought he remembered the tree dying and in an effort to reduce the spread of a pine beetle had piled trees in the area with it and burned it. I find no remains of the bearing tree.

SEE SURVEY NUMBER 028-2026

DESCRIPTION OF MONUMENT AND ACCESSORIES I ESTABLISHED TO MONUMENT THE ORIGINAL LOCATION OF THIS CORNER:

At the found fence corner, I set a 2 1/2" x 30" aluminum pipe, 28" in the ground, with 3" aluminum cap marked as shown and in a 2 ft. mound of stone, from which:

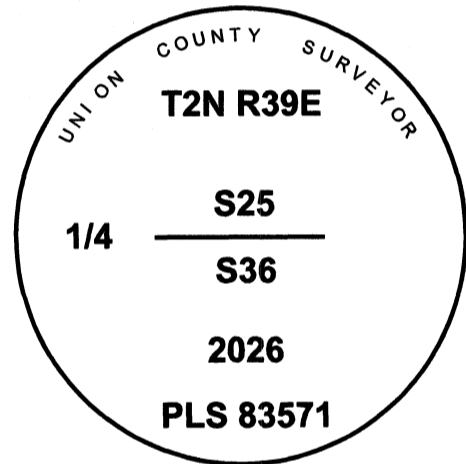
NEW BEARING OBJECTS:

A 5/8" x 15" iron pin bears North 51°38' East, a dist. of 15.01 ft., marked UNION COUNTY SURVEYOR NE RP.

A 5/8" x 15" iron pin bears South 44°47' East, a dist. of 25.30 ft., marked UNION COUNTY SURVEYOR SE RP.

A 5/8" x 15" iron pin bears South 27°33' West, a dist. of 31.14 ft., marked UNION COUNTY SURVEYOR SW RP.

A 5/8" x 15" iron pin bears North 65°15' West, a dist. of 29.61 ft., marked UNION COUNTY SURVEYOR NW RP.



I hereby certify that the corner was monumented on June 9th, 2026.

Witnesses: Kyle Tucker

REGISTERED
PROFESSIONAL
LAND SURVEYOR

[Signature]
OREGON
June 2, 2010
JEFFREY S. HSU
83571

Renewal Date: June 30, 2027

I use a Leica GS 18XI with RTK in the establishment of the new bearing objects. Basis of Bearing is as per OCRS La Grande. Bearings and distances are measured to the center of the aluminum caps.

UNION COUNTY
SURVEYOR
Date Received 6/24/26
Date Filed 6/24/26
Filed By *[Signature]*
File Number 015-2026R