

**CERTIFIED RECORD OF LAND CORNER MONUMENTATION**

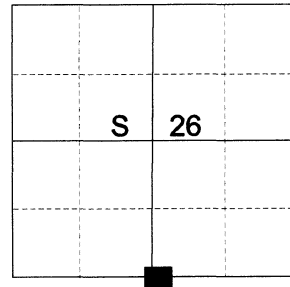
**HISTORY OF ORIGINAL CORNER ESTABLISHED:**

Corner established under GLO joint contract number 382 executed by Rufus S. Moore dated March 23<sup>rd</sup> 1881. Surveyor General field notes state: Set Basalt stone 22 x 14 x 4 in mound of stone for 1/4 sec. cor.

In 1962 Arthur Graham, as part of Union County Survey 18-62, uses a fence corner as the monument.

Fence corner accepted by James Voelz in Survey Number 35-73

T 2 N R 39 E V-19



**DESCRIPTION OF CORNER EVIDENCE FOUND:**

A fence corner to North/East/South bearing fence lines. No remaining original evidence.

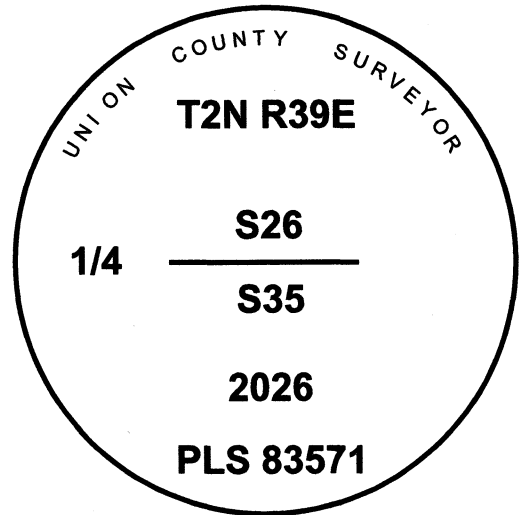
SEE SURVEY NUMBER 028-2026

**DESCRIPTION OF MONUMENT AND ACCESSORIES I ESTABLISHED TO MONUMENT THE ORIGINAL LOCATION OF THIS CORNER:**

At position of the found fence corner, I set a 2 1/2" x 30" aluminum pipe, 27" in the ground and marked as shown with 2 ft. diam. collar of stone, from which:

**NEW BEARING OBJECTS:**

- A 10" Ponderosa Pine bears North 37° East, a dist. of 72.30 ft., marked 1/4 S26 BT.
- A 5/8" x 15" iron pin bears South 34° East, a dist. of 29.85 ft., with 1 1/2" aluminum cap marked UNION COUNTY SURVEYOR SE RP.
- A 5/8" x 15" iron pin bears South 48° West, a dist. of 39.10 ft., with 1 1/2" aluminum cap marked UNION COUNTY SURVEYOR SW RP.
- A 12" Ponderosa Pine bears North 51° West, a dist. of 42.10 ft., marked 1/4 S26 BT.



I hereby certify that the corner was monumented on June 18th, 2026.

Witness: Kyle Tucker

I use a tape and compass in the establishment of the new bearing objects. 14° East was used for declination and measured to a brass washer labeled "OPLS 83571" in the BT blaze at the base of the tree. Distances are to a 60D nail in the right side of the base of the center of the tree.

**REGISTERED PROFESSIONAL LAND SURVEYOR**



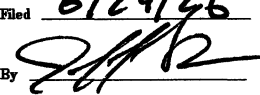
OREGON  
June 2, 2010  
JEFFREY S. HSU  
83571

Renewal Date: June 30, 2027

**UNION COUNTY SURVEYOR**

Date Received 6/24/26

Date Filed 6/24/26

Filed By 

File Number 013-2026R