

CERTIFIED RECORD OF LAND CORNER MONUMENTATION

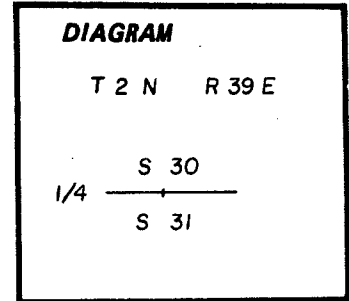
v-3

History of original corner establishment:

Corner originally set in 1881 by Rufus S. Moore under Government Contract Number 382. Surveyor General Notes state:

Set post for 1/4 section corner from which:

- A tamarack 10" diameter bears N 20° E, 27 links dist.
- A tamarack 24" diameter bears S 72° E, 33 links dist.



No re-survey found in records.

Description of corner evidence found:

None

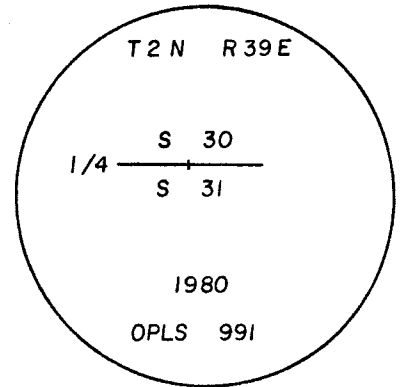
Heavy logging in this area.

See survey number 1-81 as recorded in the office of the union County Surveyor

Description of monument and accessories I established to perpetuate the original location of this corner:

At single proportionate distance I set a 1" x 30" galvanized iron pipe with brass cap marked as shown, 28" in the ground, from which New BTs:

- A tamarack 6" in diameter bears S 43° W, 30.5 ft marked 1/4 S31 BT
- A tamarack 5" in diameter bears N 10° E, 67.2 ft marked 1/4 S30 BT



REGISTERED  
PROFESSIONAL  
LAND SURVEYOR

*Gregory T. Blackman*

OREGON  
JULY 13, 1973  
GREGORY T. BLACKMAN  
991

I used a steel tape and a magnetic compass with 20° E, declination. I set a brass washer marked OPLS 991 at the BT blaze.

Office of..... County of.....

State of....., I hereby certify that the within instrument was filed in this office for record on the..... day of....., 19.....

..... by ..... (COUNTY OFFICIAL) (DEPUTY)

Form R6-7100-57 (9/71)

UNION COUNTY SURVEYOR

Date Received \_\_\_\_\_

Date Filed \_\_\_\_\_ ☆ GPO-798-276

By \_\_\_\_\_

File No. 293-83R

**CERTIFIED RECORD OF LAND CORNER MONUMENTATION**

**HISTORY OF ORIGINAL CORNER ESTABLISHED:**

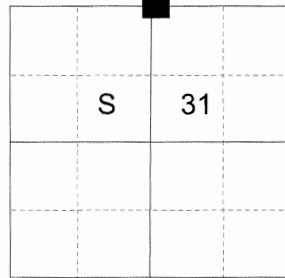
Corner originally established by Rufus S. Moore under GLO contract number 382 dated March 23, 1881. Surveyor General field notes state:

Set post for 1/4 sec. cor. from which:

A tamarack 10 ins diam bears N 2° E 27 lks dist  
 A tamarack 24 ins diam bears S 72° E 33 lks dist

Corner monumented by Gregory T. Blackman in Survey Number 1-81. Union County Monumentation record 293-83R states:

T 2 N R 39 E V-3



At single proportionate distance I set a 1"x30" galvanized iron pipe with brass cap marked as shown, 28" in the ground, from which New Bts:

A tamarack 6" in diameter bears S 43° W, 30.5 ft marked ¼ S31 BT  
 A tamarack 5" in diameter bears N 10° E, 67.2 ft marked ¼ S30 Bt

**DESCRIPTION OF CORNER EVIDENCE FOUND:**

Found a 1" galvanized iron pipe, 3" above ground with 2½" brass cap marked as shown, from which:

A 18" Western Larch bears North 10° East a dist. of 67.20 ft., alive and vigorous with healed blaze.

A 15" Tamarack bears South 43° West a dist. of 30.50 ft., alive and vigorous with healed blaze.

Steel fencepost bears East 5'

**DESCRIPTION OF MONUMENT AND ACCESSORIES I ESTABLISHED TO PERPETUATE THE ORIGINAL LOCATION OF THIS CORNER:**

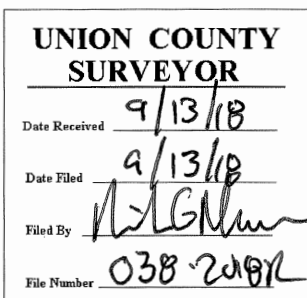
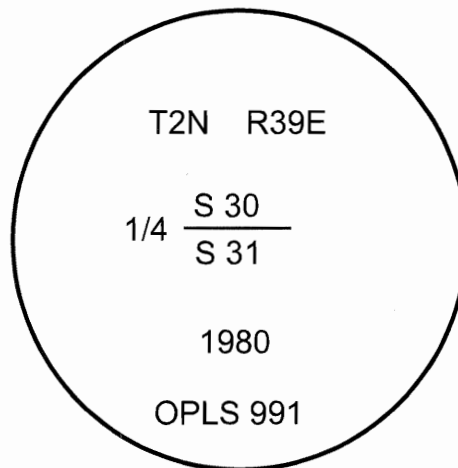
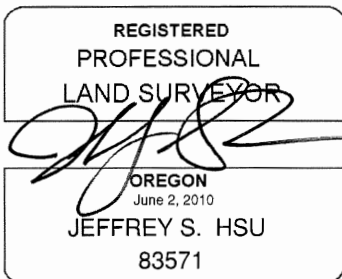
From the iron pipe monument:

**NEW BEARING TREES:**

A 15" White fir bears South 4° East a dist. of 25.90 ft., marked "1/4 S31 BT".

A 13" Western Larch bears North 67° West a dist. of 13.50 ft., marked "1/4 S30 BT".

I hereby certify that the corner was perpetuated on August 29, 2018.  
 Witness: Kyle A. Tucker, Ryan Skeen



I used a steel tape and magnetic compass in the establishment of the new accessories. I used 13° East declination. The distances are to a 60d spike driven into the right side of the root crown of the bearing trees. A brass washer marked OPLS 83571 is attached to the BT blaze of the new bearing trees.