

**UNION COUNTY SURVEYOR**

**CERTIFIED RECORD OF LAND CORNER MONUMENTATION**

**HISTORY OF ORIGINAL CORNER ESTABLISHMENT:**

Corner originally established by Barry B. Barbor under Boise Cascade contract, dated April 1979. Survey No. 033-1979 states:

Set 1 1/4" x 30" Pipe & B.C.

A Pine 18" dia. bears S34°E, 36.4 feet.  
A Pine 15" dia. bears N71° W, 41.9 feet.

No record of subsequent monumentation found in Union County survey records.

**DESCRIPTION OF CORNER EVIDENCE FOUND:**

Found a 16" Ponderosa Pine that bears S 71° E, a distance of 41.9 feet, tree alive and scribes visible.  
Found a 20" Stump, that bears N34° W, a distance of 36.40 feet, tree cut too low to see any scribes.

No evidence of corner monument found, possibly destroyed by farming operations.

See Union County Survey 033-1979

**DESCRIPTION OF MONUMENT AND ACCESSORIES I ESTABLISHED TO PERPETUATE THE ORIGINAL LOCATION OF THIS CORNER:**

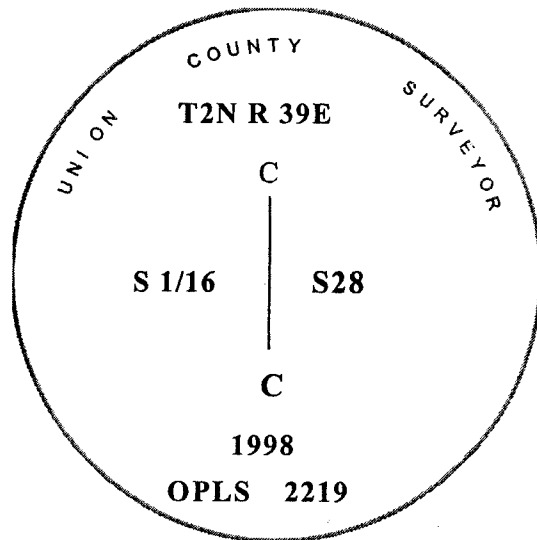
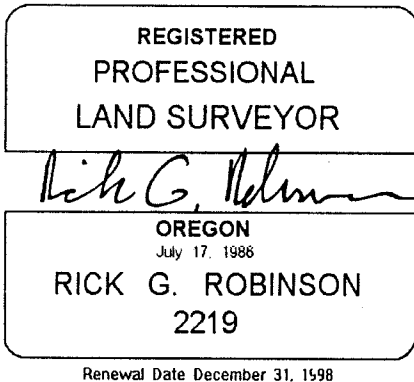
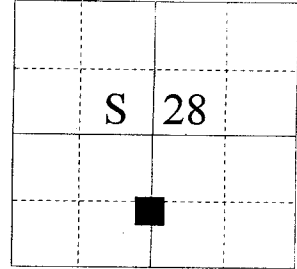
At record bearing and distance from existing bearing trees, I set a 2 1/2" x 30" aluminum pipe with aluminum cap marked as shown below, 38" in the ground from which:

**NEW BEARING TREES.**

A 13 inch Ponderosa Pine bears N42°W, a distance of 43.21 feet, marked CS 1/16 S16 BT.

I hereby certify that the corner was monumented on December 3, 1998.  
Witness: Norbert Volny and Greg Engelgau

T 2 N R 39 E U - 11



**UNION COUNTY SURVEYOR**

Date Received 12/15/98

Date Filed 12/18/98

Filed By [Signature]

File Number 183-1998R

I used a steel tape and a magnetic compass in the establishment of the new accessories. I used 20° east magnetic declination. The distances are to a 60d spike driven into the root crown of the bearing tree. A brass washer marked OPLS 2219 is attached to the BT blaze.

**UNION COUNTY SURVEYOR**

**CERTIFIED RECORD OF LAND CORNER MONUMENTATION**

**HISTORY OF ORIGINAL CORNER ESTABLISHMENT:**

Corner originally established by Barry B. Barbor under Boise Cascade contract, dated April 1979. Survey No. 033-1979 states:

Set 1 1/4" x 30" Pipe & B.C.

A Pine 18" dia. bears S34°E, 36.4 feet.  
A Pine 15" dia. bears N71° W, 41.9 feet.

No record of subsequent monumentation found in Union County survey records.

**DESCRIPTION OF CORNER EVIDENCE FOUND:**

Found a 16" Ponderosa Pine that bears N 71° W, a distance of 42.0 feet, tree alive and scribes visible.  
Found a 20" Stump, that bears N34° W, a distance of 36.40 feet, tree cut too low to see any scribes.

No evidence of corner monument found, possibly destroyed by farming operations.

See Union County Survey 033-1979

**DESCRIPTION OF MONUMENT AND ACCESSORIES I ESTABLISHED TO PERPETUATE THE ORIGINAL LOCATION OF THIS CORNER:**

At record bearing and distance from existing bearing trees, I set a 2 1/2" x 30" aluminum pipe with aluminum cap marked as shown below, 38" in the ground from which:

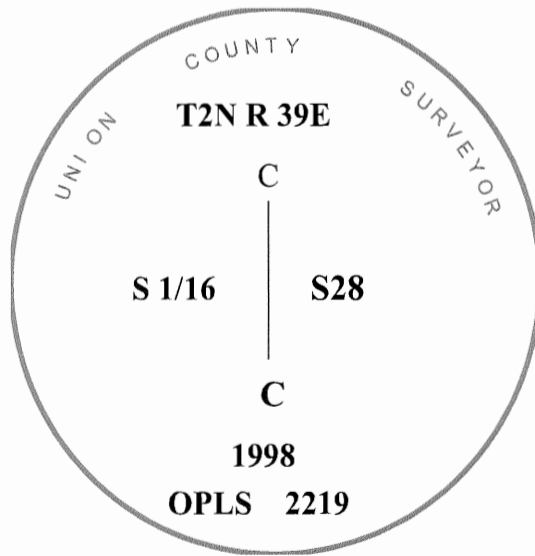
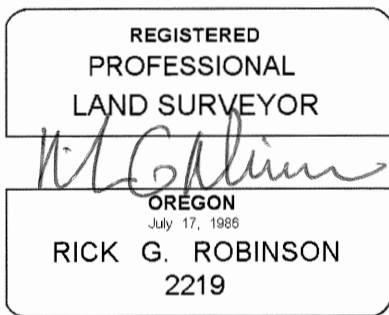
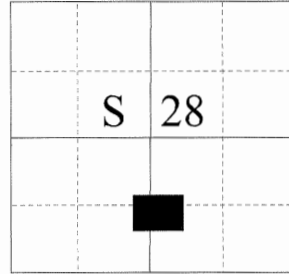
**NEW BEARING TREES.**

A 13 inch Ponderosa Pine bears S42°E, a distance of 43.21 feet, marked CS 1/16 S16 BT.

I hereby certify that the corner was affirmed on May 29, 2018  
Witness: Kyle Tucker

**NOTE: This monumentation record is being filed to correct inaccurate data shown on monumentation record 183-1998R**

T 2 N R 39 E U - 11



**UNION COUNTY SURVEYOR**  
Date Received 5/30/18  
Date Filed 5/30/18  
Filed By [Signature]  
File Number 024-2018R

I used a steel tape and a magnetic compass in the establishment of the new accessories. I used 20° east magnetic declination. The distances are to a 60d spike driven into the root crown of the bearing tree. A brass washer marked OPLS 2219 is attached to the BT blaze.