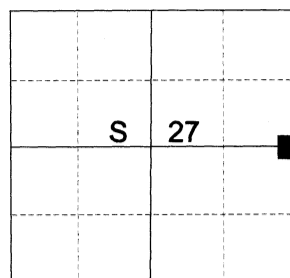


CERTIFIED RECORD OF LAND CORNER MONUMENTATION

HISTORY OF ORIGINAL CORNER ESTABLISHED:

Corner established under GLO joint contract number 382 executed by Rufus S. Moore dated March 23rd 1881. Surveyor General field notes state: Set post for 1/4 sec. cor. from which:
A Pine 34 in. diam. bears N44°E 106 lks. dist.
A Pine 30 in. diam. bears S44°W 74 lks. dist.

T 2 N R 39 E T-17



In 1977 James Hambleton, as part of Union County Survey 108-77, shows setting the corner by proportion.

In 2014, as part of Union County Survey 025-2014, I searched for the corner and proportioned the corner but did not set it.

DESCRIPTION OF CORNER EVIDENCE FOUND:

Position falls in a cultivated field. No original evidence found.

SEE SURVEY NUMBER 028-2026

DESCRIPTION OF MONUMENT AND ACCESSORIES I ESTABLISHED TO MONUMENT THE ORIGINAL LOCATION OF THIS CORNER:

At proportionate position, I set a 2 1/2" x 30" aluminum pipe, 40" in the ground, with aluminum cap marked as shown, from which:

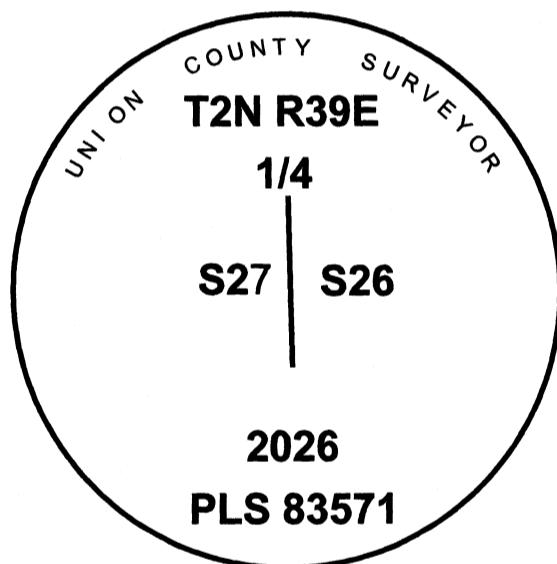
NEW BEARING OBJECTS:

A 5/8" x 30" iron pin bears North 43°17' East, a dist. of 25.00 ft., with 1 1/2" aluminum cap marked UNION COUNTY SURVEYOR NE RP.

A 9" Ponderosa Pine bears South 4° East, a dist. of 69.80 ft., mkd. 1/4 S26 BT.

A 5/8" x 30" iron pin bears South 50°57' West, a dist. of 53.85 ft., with 1 1/2" aluminum cap marked UNION COUNTY SURVEYOR SW RP.

A 13" Ponderosa Pine bears North 89° West, a dist. of 110.30 ft., mkd. 1/4 S27 BT.



I hereby certify that the corner was monumented on June 18th, 2026.

Witness: Kyle Tucker

I use a Leica GS 18I with RTK in the establishment of the new bearing objects. Basis of Bearing is OCRS La Grande. Bearings and distances are measured to the center of the aluminum caps. I use a tape and compass in the establishment of the new bearing trees. 14° East was used for declination and measured to a brass washer labeled "OPLS 83571" in

REGISTERED PROFESSIONAL LAND SURVEYOR
[Signature]
OREGON June 2, 2010
JEFFREY S. HSU
83571

Renewal Date: June 30, 2027

UNION COUNTY SURVEYOR
Date Received 6/24/26
Date Filed 6/24/26
Filed By *[Signature]*
File Number 010-2026R