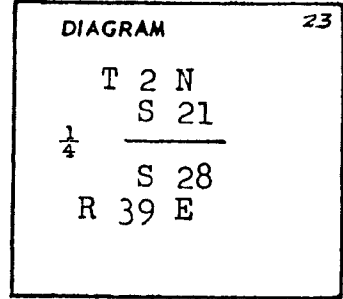


CERTIFIED RECORD OF LAND CORNER MONUMENTATION

History of original corner establishment:

A basalt stone 10" x 8" x 8" in a mound of stone, was set for the  $\frac{1}{4}$  corner from which:  
A pine 36" dia. bears S 43 W, 84 lks. dist.



Description of corner evidence found:

Found a stone 10" x 8" x 8" in bottom of a mound of stone, could not identify any markings on the stone. Found a badly rotted pine tree laying on the ground which bears S 43 W, 84 lks. distance from the mound of stone. Thus evidence corresponds with the GLO notes.

Description of monument and accessories established to perpetuate the original location of this corner

I placed a  $\frac{5}{8}$ " x 30" iron pin along side the 10" x 8" x 8" stone in a large mound of stone and set two new bearing trees as follows:  
A pine 16" dia. which bears N 54 W, 46.5 feet scribed  $\frac{1}{4}$ S S 21 BT.  
A douglas fir 8" dia. which bears S 25 W, 37.6 feet scribed  $\frac{1}{4}$ S S 28 BT.

REGISTERED  
PROFESSIONAL  
LAND SURVEYOR

*James H. Hambleton*  
12-20-77

OREGON  
JULY 10, 1964  
JAMES H. HAMBLETON  
645

Office of..... County of.....  
State of....., I hereby certify that the within instrument was filed in this office  
for record on the ..... day of .....

..... by .....

(COUNTY OFFICIAL) (DEPUTY)

**UNION COUNTY  
SURVEYOR**

Date Received \_\_\_\_\_  
Date Filed \_\_\_\_\_  
By \_\_\_\_\_  
File No. 284-83R

GPO 776-363

**CERTIFIED RECORD OF LAND CORNER MONUMENTATION**

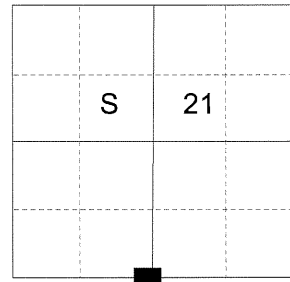
**HISTORY OF ORIGINAL CORNER ESTABLISHED:**

Corner originally established by Rufus S. Moore under GLO contract number 382 dated March 23, 1881. Surveyor General record states:  
Set basalt stone 10"x8"x8" in a mound of stone for 1/4 sec. cor. from which:  
A pine 36" dia. bears S43°W, 84 lks. dist.

In 1977 Corner evidence was found by James H. Hambleton OPLS 645. Union County Monumentation record states: "Found a stone 10x8x8 in bottom of a mound of stone, could not identify any markings on the stone. Found a badly rotted pine tree laying on the ground which bears S43°W, 84 lks. distance from the mound of stone. Thus evidence corresponds with the GLO notes." He then set a 5/8 x 30 iron pin along side the 10x8x8 stone in the mound of stone from which:  
A Pine 16" dia. bears N54°W, 46.5 feet scribed 1/4S S21 BT  
A Douglas Fir 8" dia. bears S25°W, 37.6 feet scribed 1/4S S28 BT

In 1979 corner was remonumented by Barry B. Barbour OPLS 1051 on Union County survey number 33-79. His map states: Corner remonumented from original corner evidence. 1 1/4" x 30" Pipe & B.C.  
Found: 8" Fir S27°W, 37.7 ft.  
Found: 16" Pine N51°W, 47.2 ft.

T 2 N R 39 E R-11



**DESCRIPTION OF CORNER EVIDENCE FOUND:**

Found 1" iron pipe with 2 1/2" Brass cap marked as shown below, 10" above ground, from which:  
A 13" Douglas Fir bears North 27° East 37.60 feet, alive with healed blaze and dead top.  
A 25" Ponderosa Pine bears North 51° West 46.50 feet, alive and vigorous with healed blaze.  
  
Boise Cascade location poster bears South 72° West 17.9 feet  
Monument falls in fence corner with rock jack from which fences bear North, South, and East

**DESCRIPTION OF MONUMENT AND ACCESSORIES I ESTABLISHED TO PERPETUATE THE ORIGINAL LOCATION OF THIS CORNER:**

From the iron pipe monument:

**NEW BEARING OBJECTS:**

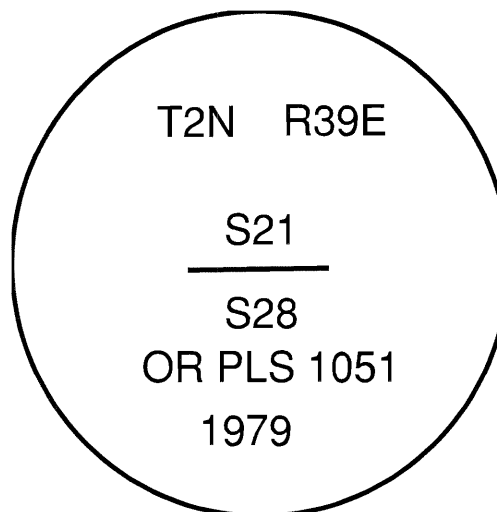
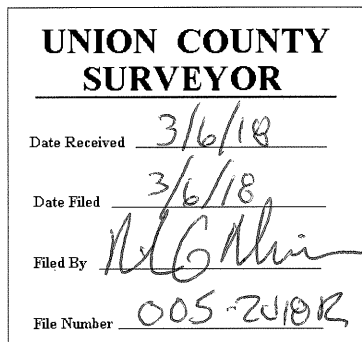
A 17" Ponderosa Pine bears North 43° East, a distance of 83.70 feet, marked 1/4 S21 BT.  
A 29" Ponderosa Pine bears South 80° East, a distance of 44.95 feet, marked 1/4 S28 BT.

I hereby certify that the corner was perpetuated on February 8, 2018.

Witness: Kyle Tucker



Renewal Date: June 30, 2019



I used a steel tape and magnetic compass in the establishment of the new accessories. I used 13° East declination, the distances are to a 60d spike driven into the right side of the root crown of the bearing trees. A brass washer marked OPLS 83571 is attached to the BT blaze of the new bearing trees.

# HORIZONTAL CONTROL DATA

## UNION COUNTY, OREGON

### OREGON STATE PLANE, NORTH ZONE (3601)

STA NAME: 2018019

1/4 SECTION CORNER COMMON TO SECTIONS 21 AND 28

TWP. 2 N RGE. 39 E.

GEODETIC COORD: NAD 83(91)

DATE TIED: February 8, 2018

LAT: 45 ° 37 ' 51.66518 " N

SURVEYOR: RICK G. ROBINSON  
OPLS 2219

LONG: 117 ° 56 ' 32.83585 " W

FIRM: BAGETT, GRIFFITH, & BLACKMAN  
2006 ADAMS AVENUE  
LAGRANDE, OR 97850  
(541) 963-6092

SP. COOR: NAD 83(91)

N: 726512.355 INT FT.

E: 8856236.344 INT FT.

TYPE: GPS

THETA: 1 ° 48 ' 49.5920691 "

ORDER: SECOND CLASS: 1

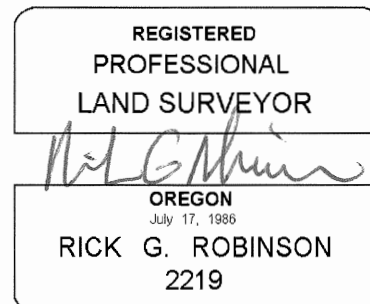
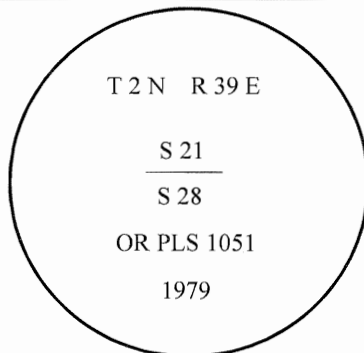
SCALE FACTOR: 0.9999271113

ELEV: 3462.31 US FT.

ELEV: DATUM: NGVD 29

#### COMMENTS:

1" Iron pipe with 2 1/2" brass cap marked  
as shown. Set in Fence Corner N-S-E.



Renewal Date: December 31, 2018

1 METER = 3.2808333333... US FEET = 39.37 INCHES

1 METER = 3.280839895 INT'L FEET OR 1 INCH = 2.54 CM

TO CALCULATE ELEVATION FACTOR ( IN THE NORTH AMERICAN CONTINENT)

DIVIDE 20,906,000 BY (20,906,000 + ELLIPSOID ELEV. IN FEET)