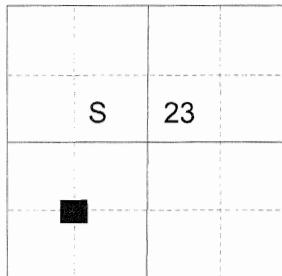


CERTIFIED RECORD OF LAND CORNER MONUMENTATION

**HISTORY OF ORIGINAL CORNER ESTABLISHED:**

None Established

T 2 N R 39 E Q-18



**DESCRIPTION OF CORNER EVIDENCE FOUND:**

None

SEE SURVEY NUMBER 049-2017

**DESCRIPTION OF MONUMENT AND ACCESSORIES I ESTABLISHED**

**TO PERPETUATE THE ORIGINAL LOCATION OF THIS CORNER:**

At position by survey I set a 5/8" x 30" iron pin with 2 1/2" aluminum cap marked as shown, 28" in the ground

from which:

**NEW BEARING TREES:**

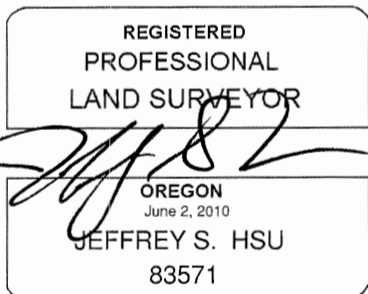
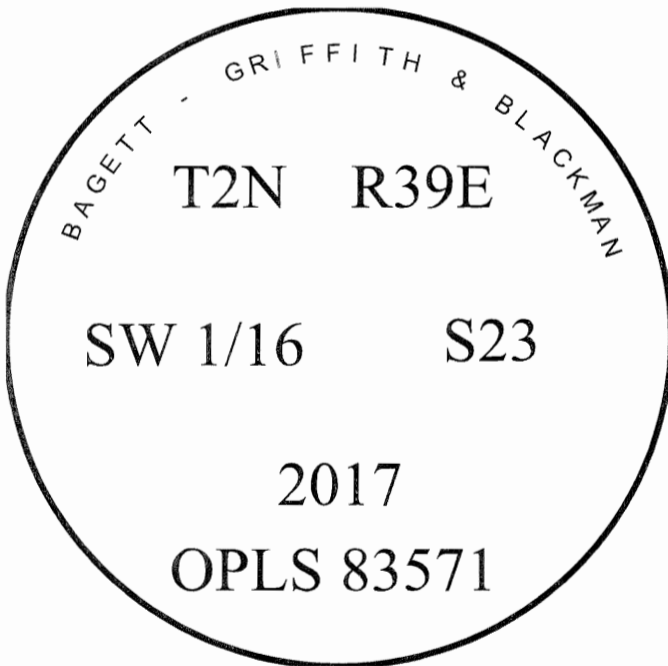
A 13" Douglas Fir bears North 10° West, a distance of 39.05 feet, marked SW 1/16 S23 BT.  
A 10" White Fir bears South 82° East, a distance of 13.80, marked SW 1/16 S23 BT.

Set steel fencepost approx. 1 ft. South of monument.

North/South bearing fence bears approx. 15' West of monument

I hereby certify that the corner was monumented December 8, 2017.

Witness: Kyle Tucker



Renewal Date: June 30, 2019

**UNION COUNTY SURVEYOR**

Date Received 12/14/17

Date Filed 12/14/17

Filed By \_\_\_\_\_

File Number 056-2017R

I used a steel tape and magnetic compass in the establishment of the bearing trees. Magnetic declination used was 13° East. Bearing is to a brass washer marked OPLS 83571 in the lower blaze of the tree. Distance is to a spike set in the root crown of the side of the tree.