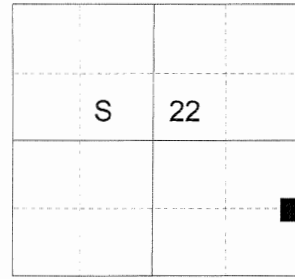


CERTIFIED RECORD OF LAND CORNER MONUMENTATION

**HISTORY OF ORIGINAL CORNER ESTABLISHED:**

None Established

T 2 N R 39 E Q-17



**DESCRIPTION OF CORNER EVIDENCE FOUND:**

None

SEE SURVEY NUMBER 049-2017

**DESCRIPTION OF MONUMENT AND ACCESSORIES I ESTABLISHED**

**TO PERPETUATE THE ORIGINAL LOCATION OF THIS CORNER:**

At position by survey I set a 5/8" x 30" iron pin with 2 1/2" aluminum cap marked as shown, 24" in the ground

from which:

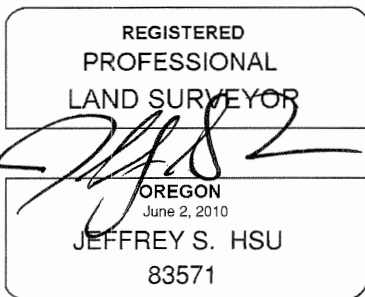
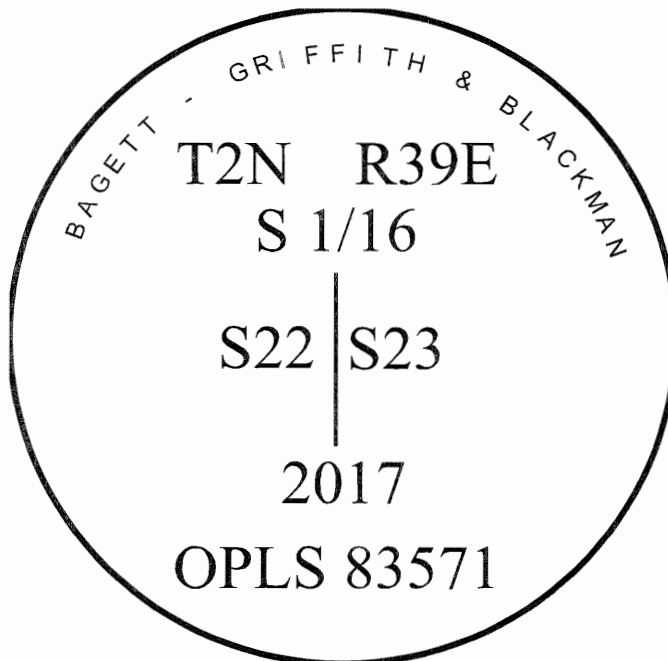
**NEW BEARING TREES:**

A 9" Douglas Fir bears North 73° East, a distance of 13.40 feet, marked S 1/16 S23 BT.  
An 8" Douglas Fir bears North 77° West, a distance of 8.50 feet, marked S 1/16 S22 BT.

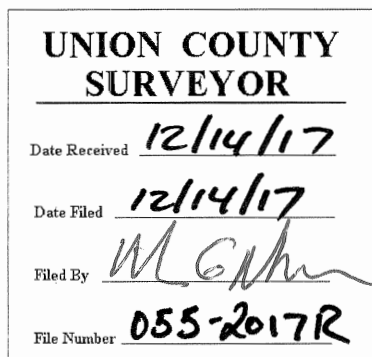
Set steel fencepost approx. 0.5 ft. North of monument.

I hereby certify that the corner was monumented December 7, 2017.

Witness: Kyle Tucker



Renewal Date: June 30, 2019



I used a steel tape and magnetic compass in the establishment of the bearing trees. Magnetic declination used was 13° East. Bearing is to a brass washer marked OPLS 83571 in the lower blaze of the tree. Distance is to a spike set in the root crown of the side of the tree.