

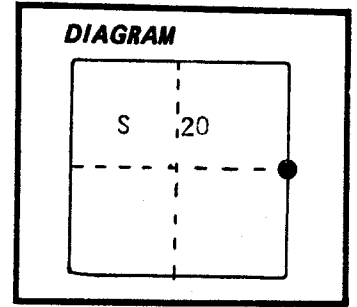
CERTIFIED RECORD OF LAND CORNER MONUMENTATION

INDEX FILE # P-9

History of original corner establishment:

Corner originally set by Rufus S. Moore under General land office contract number 382, dated March 23, 1881 Notes state;

- Set post for 1/4 corner from which;
- A 9 inch dia. fir bears N49°E, 45 lks.
- A 26 inch dia. fir bears S40°W, 19 lks.

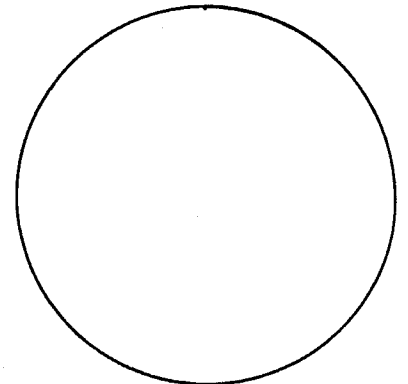


Description of corner evidence found:

No evidence found

Description of monument and accessories I established to perpetuate the original location of this corner:

- At proportionate distance I set a railroad spike marked + in the root crown of a 14 inch dia. tamarack, from which;
- A 10 inch dia. tamarack bears S84°E, 28.1 feet, marked 1/4 S21 BT
- A 14 inch dia. tamarack bears N33°W, 1.1 feet, marked 1/4 S20 BT



REGISTERED  
PROFESSIONAL  
LAND SURVEYOR

*Gregory T. Blackman*

OREGON  
JULY 13, 1973  
GREGORY T. BLACKMAN  
991

I used a steel tape and magnetic compass with 18° East declination in the establishment of these accessories. I set a brass washer marked OPLS 991 by the BT scribe, all distances were measured to the center of the trees.

Office of COUNTY SURVEYOR County of UNION  
 State of OREGON I hereby certify that the within instrument was filed in this office  
 for record on the 10 day of SEPTEMBER, 1981.  
HOWARD L. PEEP by Gary J. Langit  
 (COUNTY OFFICIAL) (DEPUTY)

UNION COUNTY  
SURVEYOR

---

Date Received \_\_\_\_\_  
 Date Filed \_\_\_\_\_  
 By \_\_\_\_\_  
 File No. 279-83R

☆ GPO—798-276

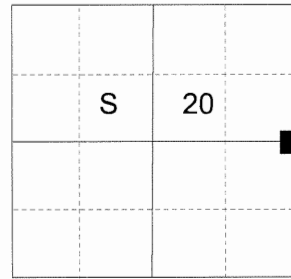
**CERTIFIED RECORD OF LAND CORNER MONUMENTATION**

**HISTORY OF ORIGINAL CORNER ESTABLISHED:**

Corner originally set by Rufus S. Moore under GLO contract number 382, dated March 23, 1881. Surveyor General Field Notes state: Set post for 1/4 corner from which:  
A 9 inch dia. fir bears N49°E, 49 lks.  
A 26 inch dia. fir bears S40°W, 19 lks.

In Union County Survey 65-81 Gregory T. Blackman OPLS 991 searched for evidence and found nothing. Union County Monumentation Record 279-83R states: At proportionate distance I set a railroad spike marked + in the root crown of a 14 inch dia. tamarack, from which:  
A 10 inch dia. tamarack bears S84°E, 28.1 ft, marked 1/4 S21 BT  
A 14 inch dia. tamarack bears N33°W, 1.1 feet, marked 1/4 S20 BT

T 2 N R 39 E P-09



**DESCRIPTION OF CORNER EVIDENCE FOUND:**

A railroad spike marked + in root crown of 18" diam. x 12" tall stump, solid wood with healed blaze which bears North 33° West, a distance of 13.2" to center.  
From which:  
A 13.2" x 14" tall stump, partially decayed, bears South 84° East, a distance of 28.1 ft. with BT scribing visible on opened blaze.

**DESCRIPTION OF MONUMENT AND ACCESSORIES I ESTABLISHED TO PERPETUATE THE ORIGINAL LOCATION OF THIS CORNER:**

From the railroad spike:

**NEW BEARING TREES:**

A 6" White Fir bears North 59° East, a distance of 26.55 feet marked 1/4 S21 BT.  
A 3" Douglas Fir bears South 3° East, a distance of 26.80 feet marked 1/4 S21 BT.  
A 4" White Fir bears South 71° West, a distance of 36.20 feet marked 1/4 S20 BT.  
A 7" Douglas Fir bears North 61° West, a distance of 52.05 feet marked 1/4 S20 BT.

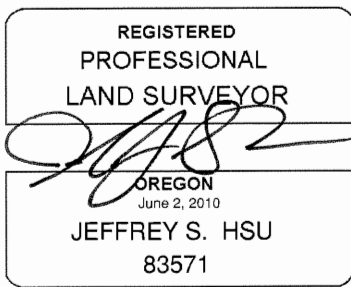
Set a 60D spike 0.1 ft. South of monument

I set a steel fencepost approximately 1 foot South of corner monument.

Old fenceline runs North/South approx. 85 ft. East of monument

I hereby certify that the corner was perpetuated on February 8, 2018.

Witness: Kyle Tucker



Renewal Date: June 30, 2019

I used a steel tape and magnetic compass in the establishment of the new accessories. I used 13° East declination, the distances are to a 60d spike driven into the right side of the root crown of the bearing trees. A brass washer marked OPLS 83571 is attached to the BT blaze of the new bearing trees.

<b>UNION COUNTY SURVEYOR</b>	
Date Received	3/6/18
Date Filed	3/6/18
Filed By	A. G. Muir
File Number	003-2018R

**HORIZONTAL CONTROL DATA**  
**UNION COUNTY, OREGON**  
**OREGON STATE PLANE, NORTH ZONE (3601)**

STA NAME: 2018017

1/4 SECTION CORNER COMMON TO SECTIONS 20 AND 21

TWP. 2 N RGE. 39 E.

GEODETIC COORD: NAD 83(91)

DATE TIED: February 8, 2018

LAT: 45 ° 38 ' 18.21921 " N

SURVEYOR: RICK G. ROBINSON  
OPLS 2219

LONG: 117 ° 57 ' 9.75123 " W

FIRM: BAGETT, GRIFFITH, & BLACKMAN  
2006 ADAMS AVENUE  
LAGRANDE, OR 97850  
(541) 963-6092

SP. COOR: NAD 83(91)

N: 729117.639 INT FT.

E: 8853529.723 INT FT.

TYPE: GPS

THETA: 1 ° 48 ' 23.4122005 "

ORDER: SECOND CLASS: 1

SCALE FACTOR: 0.9999281592

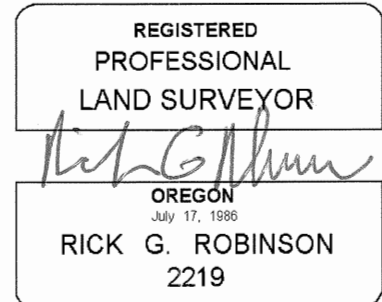
ELEV: 3344.62 US FT.

ELEV: DATUM: NGVD 29

---

COMMENTS:

Corner is a railroad spike in a stump set by  
Union County Survey Number 65-81



Renewal Date: December 31, 2018

1 METER = 3.2808333333... US FEET = 39.37 INCHES

1 METER = 3.280839895 INT'L FEET OR 1 INCH = 2.54 CM

TO CALCULATE ELEVATION FACTOR ( IN THE NORTH AMERICAN CONTINENT)

DIVIDE 20,906,000 BY (20,906,000 + ELLIPSOID ELEV. IN FEET)