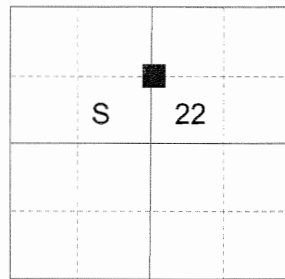


CERTIFIED RECORD OF LAND CORNER MONUMENTATION

HISTORY OF ORIGINAL CORNER ESTABLISHED:

Corner not previously established

T 2 N R 39 E O-15



DESCRIPTION OF CORNER EVIDENCE FOUND:

None.

SEE SURVEY NUMBER 024-2017

DESCRIPTION OF MONUMENT AND ACCESSORIES I ESTABLISHED

TO PERPETUATE THE ORIGINAL LOCATION OF THIS CORNER:

At position determined by survey, I set a 5/8" x 30" iron pin, 27" in the ground, with a 2 1/2" Aluminum cap marked as shown below, from which:

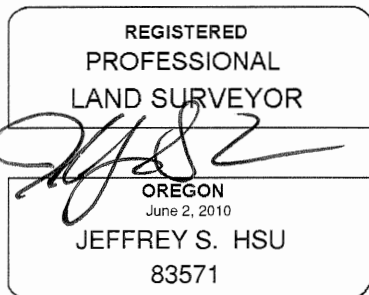
NEW BEARING TREES:

A 7" Ponderosa Pine bears North 79° East, a distance of 12.70 feet, marked CN 1/16 S22 BT.
A 4" Ponderosa Pine bears South 19° West, a distance of 20.25 feet, marked CN 1/16 S22 BT.

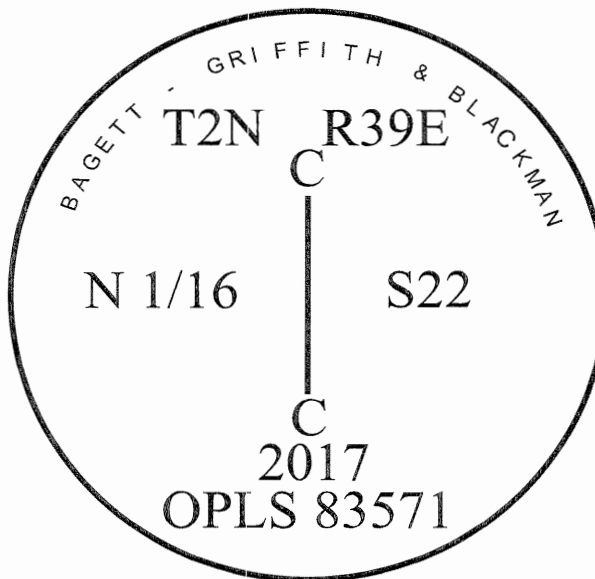
Set a steel fencepost North approx. 0.5 ft.

I hereby certify that the corner was monumented June 12, 2017.

Witness: Kyle Tucker



Renewal Date: June 30, 2019



UNION COUNTY SURVEYOR

Date Received 6/22/17

Date Filed 6/22/17

Filed By [Signature]

File Number 013-2017R

I used a steel tape and magnetic compass in the establishment of the bearing trees. Magnetic declination used was 13° East. Bearings are to a brass washer marked OPLS 83571 in the lower blaze of the tree. Distance is to a spike set in the root crown of the side of the tree.