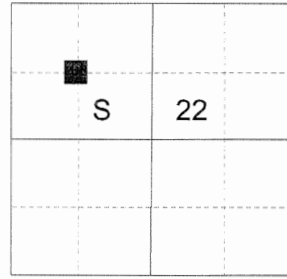


**CERTIFIED RECORD OF LAND CORNER MONUMENTATION**

**HISTORY OF ORIGINAL CORNER ESTABLISHED:**

Corner not previously established

T 2 N R 39 E O-14



**DESCRIPTION OF CORNER EVIDENCE FOUND:**

None.

SEE SURVEY NUMBER 024-2017

**DESCRIPTION OF MONUMENT AND ACCESSORIES I ESTABLISHED**

**TO PERPETUATE THE ORIGINAL LOCATION OF THIS CORNER:**

At position determined by survey, I set a 5/8" x 30" iron pin, 28" in the ground, with a 2 1/2" Aluminum cap marked as shown below, from which:

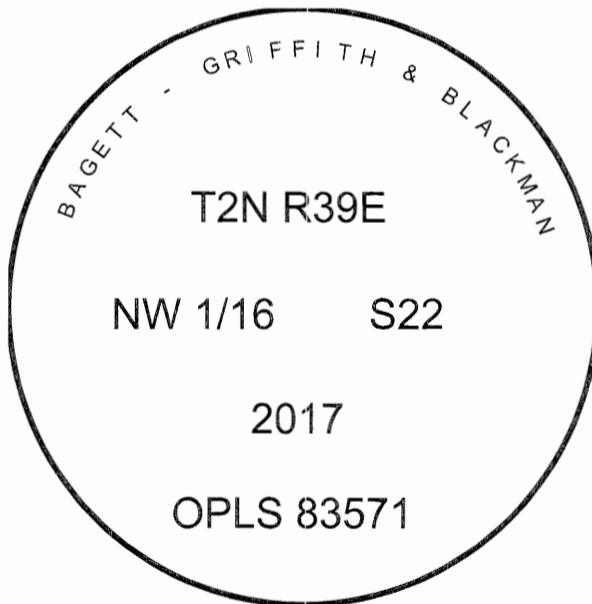
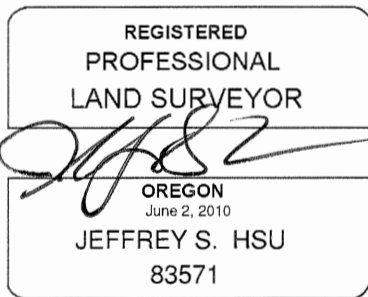
**NEW BEARING TREES:**

A 13" Ponderosa Pine bears North 56° East, a distance of 56.30 feet, marked NW 1/16 S22 BT.  
A 14" Ponderosa Pine bears South 9° West, a distance of 34.00 feet, marked NW 1/16 S22 BT.

Set a steel fencepost West approx. 0.5 ft.

I hereby certify that the corner was monumented June 12, 2017.

Witness: Kyle Tucker



**UNION COUNTY SURVEYOR**

Date Received 6/22/17

Date Filed 6/22/17

Filed By [Signature]

File Number 012-2017R

I used a steel tape and magnetic compass in the establishment of the bearing trees. Magnetic declination used was 13° East. Bearings are to a brass washer marked OPLS 83571 in the lower blaze of the tree. Distance is to a spike set in the root crown of the side of the tree.