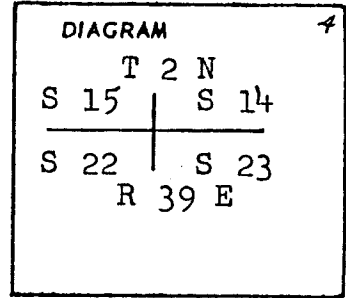


CERTIFIED RECORD OF LAND CORNER MONUMENTATION

N-17

History of original corner establishment:

A post was set for this section corner from which the following bearing trees were set:  
 A pine 36" dia. bears N 21 E 72 lks.  
 A pine 9" dia. bears N 47 W 89 lks.  
 A pine 24" dia. bears S 64 W 44 lks.  
 A pine 42" dia. bears S 16 E 73 lks.



Description of corner evidence found:

Found a mound of stone from which the following accessories were found:  
 A live pine 28" (9") bears N 47 W 89 lks. scribed T 2 N R 39 E S 15 BT.  
 No evidence of bearing tree in Section 22.  
 A pine stump bears S 16 E 73 lks found BT on stump.  
 A pine stump bears N 21 E 72 lks found BT on stump.

Description of monument and accessories established to perpetuate the original location of this corner

With this evidence I verified the GLO corner and placed a 5/8" x 30" iron pin with a cap stamped RLS 645 in the mound of stone. I then set three new bearing trees as follows:

A pine 6" dia. which bears N 42 E, 40.5 feet scribed T 2 N R 39 E S 14 BT.

A douglas fir 8" dia. which bears S 56 E, 12.5 feet scribed T 2 N R 39 E S 23 BT.

A pine 8" dia. which bears S 47 W, 46.0 feet scribed T 2 N R 39 E S 22 BT.

REGISTERED  
PROFESSIONAL  
LAND SURVEYOR

*James H. Hambleton*  
12-30-77

OREGON  
JULY 10, 1963  
JAMES H. HAMBLETON  
645

Office of ..... County of .....  
 State of ....., I hereby certify that the within instrument was filed in this office  
 for record on the ..... day of .....

..... by .....  
 (COUNTY OFFICIAL) (DEPUTY)

<b>UNION COUNTY SURVEYOR</b>	
Date Received _____	
Date Filed _____	
By _____	
File No. <u>277-83R</u>	

# HORIZONTAL CONTROL DATA

## UNION COUNTY, OREGON

### OREGON STATE PLANE, NORTH ZONE (3601)

STA NAME: 201538

SECTION CORNER COMMON TO SECTIONS 14, 15, 22 AND 23

TWP. 2 N. RGE. 39 E.

GEODETIC COORD: NAD 83(91)

DATE TIED: October 22, 2015

LAT: 45 ° 38 ' 44.46881 " N

SURVEYOR: RICK G. ROBINSON  
OPLS 2219

LONG: 117 ° 54 ' 40.90330 " W

FIRM: BAGETT, GRIFFITH, & BLACKMAN  
2006 ADAMS AVENUE  
LAGRANDE, OR 97850  
(541) 963-6092

SP. COOR: NAD 83(91)

N: 732111.016 INT FT.

E: 8864014.721 INT FT.

TYPE: GPS

THETA: 1 ° 50 ' 8.97306974 "

ORDER: SECOND CLASS: 1

SCALE FACTOR: 0.9999292113

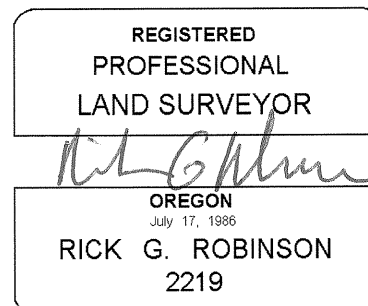
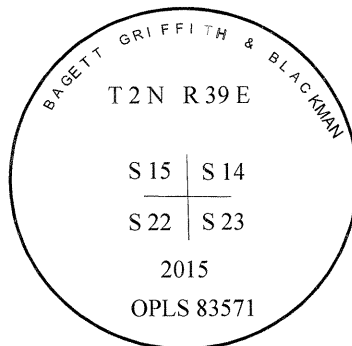
ELEV: 3453.97 US FT.

ELEV: DATUM: NGVD 29

---

#### COMMENTS:

2 ½" aluminum cap monument marked  
as shown



Renewal Date: December 31, 2016

1 METER = 3.280833333... US FEET = 39.37 INCHES

1 METER = 3.280839895 INT'L FEET OR 1 INCH = 2.54 CM

TO CALCULATE ELEVATION FACTOR ( IN THE NORTH AMERICAN CONTINENT)

DIVIDE 20,906,000 BY (20,906,000 + ELLIPSOID ELEV. IN FEET)

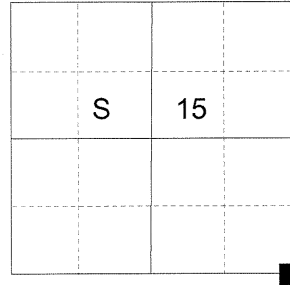
**CERTIFIED RECORD OF LAND CORNER MONUMENTATION**

**HISTORY OF ORIGINAL CORNER ESTABLISHED:**

Corner originally established by Rufus Moore in GLO contract no. 382, dated March 23, 1881. Surveyor General field notes state:

Set post for cor. to secs. 14, 15, 22 and 23, from which:  
 A Pine 36 in. diam. bears N21°E, 72 lks. dist.  
 A Pine 9 in. diam. bears N47°W, 89 lks. dist.  
 A Pine 24 in. diam. bears S64°W 44 lks. dist.  
 A Pine 42 in. diam. bears S16°E 73 lks. dist.

T 2 N R 39 E N-17



In Survey Number 108-77, James Hambleton brings the monument to county standard from original corner evidence. Union County monumentation record 277-83R states:

Found a mound of stone from which the following accessories were found: A live pine 28" (9") bears N47°W 89 lks. scribed T2N R39E S15 BT.

A pine stump bears S16E 73 lks found BT on stump.  
 A pine stump bears N21E 72 lks found BT on stump.

With this evidence I verified the GLO corner and placed a 5/8" x 30" iron pin with a cap stamped RLS 645 in the mound of stone. I then set three new bearing trees as follows:

A pine 6" dia. which bears N 42 E, 40.5 feet scribed T2N R39E S14 BT.  
 A douglas fir 8" dia which bears S 56 E, 12.5 feet scribed T2N R39E S23 BT  
 A pine 8" dia. which bears S 47 W, 46.0 feet scribed T2N R39E S22 BT.

**DESCRIPTION OF CORNER EVIDENCE FOUND:**

Found a loose mound of stone in an old fenceline. Iron pin set by Hambleton missing, from which:

A 9" stump bears North 43° East, a distance of 40.5 feet, with blaze evident.  
 A fir stump bears South 51° East, a distance of 12.5 feet, with healed blaze evident.  
 A 23" Ponderosa Pine stump bears North 46° West, a distance of 58.8 feet, high stumped with scribe marks visible on a partially healed blaze.

SEE SURVEY NUMBER 065-2015

**DESCRIPTION OF MONUMENT AND ACCESSORIES I ESTABLISHED**

**TO PERPETUATE THE ORIGINAL LOCATION OF THIS CORNER:**

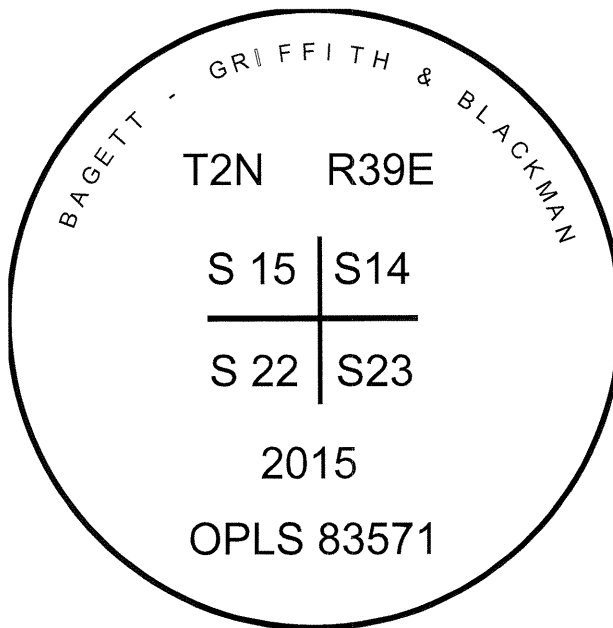
At distance intersection from the remaining bearing trees, I set a 2 1/2" x 30" aluminum pipe with 2 1/2" aluminum cap, marked as shown below, 24 inches in the ground, with collar of stone 1 1/2" ft. diam., from which:

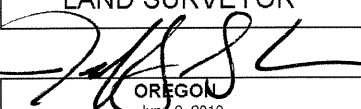
**NEW BEARING TREES:**

A 6" Douglas Fir bears North 43° East, a distance of 74.45 feet, marked T2N R39E S14 BT.  
 A 9" Douglas Fir bears South 69° East, a distance of 55.45 feet, marked T2N R39E S23 BT.  
 A 5" Ponderosa Pine bears North 62° West, a distance of 112.05 feet, marked T2N R39E S15 BT.  
 A 4" Douglas Fir bears South 40° West, a distance of 82.65 feet, marked X BT.

I hereby certify that the corner was perpetuated on October 15, 2015. Corner falls approximately in an old East/West running fenceline and approximately 3 feet North of a new East/West running fenceline.

<b>UNION COUNTY SURVEYOR</b>	
Date Received	11/2/15
Date Filed	11/2/15
Filed By	<i>W. Galun</i>
File Number	168-2015R



REGISTERED PROFESSIONAL LAND SURVEYOR

OREGON <small>June 2, 2010</small> JEFFREY S. HSU 83571

Renewal Date: June 30, 2017

I used a steel tape and magnetic compass in the establishment of the new accessories. I used 15° East declination. The distances are to a 60d spike driven into the right side of the root crown of the bearing trees. A brass washer marked OPLS 83571 is attached to the BT blaze of the new bearing trees.