

CERTIFIED RECORD OF LAND CORNER MONUMENTATION

History of original corner establishment:

1/4 corner common to Sections 12 & 13, T2N, R39E, W.M., Union County, Oregon

Original corner established in 1881 by R. Moore under contract No. 382 approved 3/23/1881. He set a post from which:
A Pine 8" diameter bears N38°E, 61 Lks. distance
A Pine 22" diameter bears S60°W, 18 Lks. distance

REGISTERED
PROFESSIONAL
LAND SURVEYOR

B. A. Sutton

OREGON
JULY 13, 1979
B. A. SUTTON
1848

RENEWAL 6/30/98

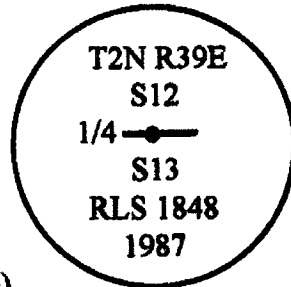
Description of corner evidence found:

No original corner evidence found. A 16" Ponderosa Pine bears N38°E, 40.3' and a stump hole with badly decayed wood bears S60°W 8.6'.

Description of monument and accessories I established to perpetuate the original location of this corner:

I set a 5/8"x30" iron rod with a 1-1/2 inch aluminum cap marked: at S38°W, 8.60' from the above described original bearing tree from which:

A 16" Ponderosa Pine bears N38°E, 40.3' blaze & scribe (BT visible)
A 12" Ponderosa Pine bears S57°30"E, 35.8' blazed & scribed (1/4S13BT)



Office of the _____ County Surveyor _____ County of _____ Union _____
State of Oregon, I hereby certify that the within instrument was filed in this office
for record on the _____ day of _____, 19 _____

(COUNTY OFFICIAL) by _____
(DEPUTY)

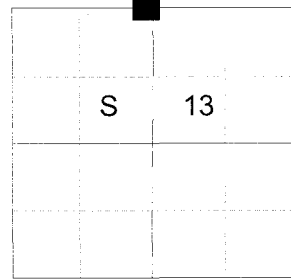
UNION COUNTY
SURVEYOR
Date Received 9/16/96
Date Filed 10/5/96
By Henry T. Blaine
File No. 096-1996C

CERTIFIED RECORD OF LAND CORNER MONUMENTATION

HISTORY OF ORIGINAL CORNER ESTABLISHED:

Corner originally established by Rufus Moore under GLO joint contract number 382 dated March 23, 1881. Surveyor General field notes state:
Set post for 1/4 section corner from which:
A Pine 8 ins. diam bears N 38° E 61 lks dist
A Pine 22 ins. diam bears S 60° W 18 lks dist

T 2 N R 39 E J-23



In 1987 B.A. Sutton found the Northeast bearing tree. Union County Monumentation Record 096-1996R states: I set a 5/8" x 30" iron rod with a 1 1/2" aluminum cap marked: at S 38°W, 8.60' from the above described original bearing tree from which:
A 16" Ponderosa Pine bears N38°E, 40.3' blaze and scribe (BT visible)
A 12" Ponderosa Pine bears S57°30'E, 35.8' blazed and scribed (1/4S13BT)

DESCRIPTION OF CORNER EVIDENCE FOUND:

Found a 5/8" iron pin, 2" above ground with 1 1/2" aluminum cap marked as shown below, from which:

A rotted pine stump bears North 38° East a dist. of 40.30 ft., dead, down, and highly decomposed with a remnant of a "B" scribe on a shard of wood.

A 19" Ponderosa Pine bears South 58° East a dist. of 35.80 ft., alive and vigorous with healed blaze.

Fence corner to West and North bearing fences has been rebuilt to the corner.

DESCRIPTION OF MONUMENT AND ACCESSORIES I ESTABLISHED TO PERPETUATE THE ORIGINAL LOCATION OF THIS CORNER:

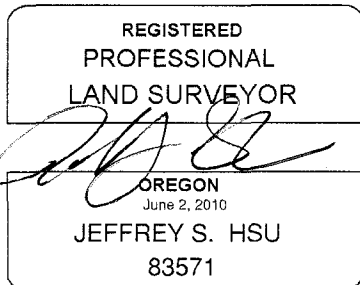
From the iron pin monument:

NEW BEARING OBJECTS:

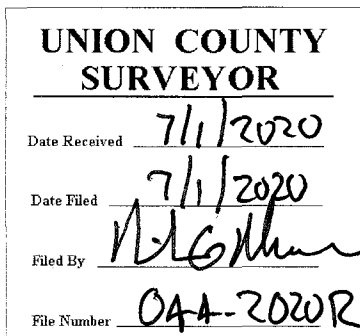
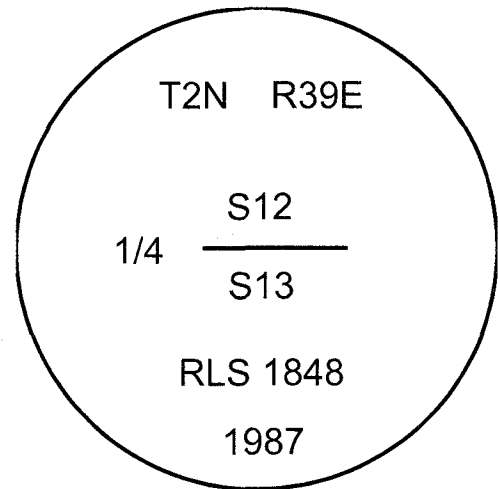
An 11" Douglas Fir bears North 35° East a dist. of 12.45 ft., marked 1/4 S12 BT.
A 8" Douglas Fir bears South 19° West a dist. of 16.20 ft., marked 1/4 S13 BT.
A 24" Douglas Fir bears North 84° West a dist. of 27.75 ft., marked 1/4 S12 BT.

I hereby certify that the corner was perpetuated on June 5, 2020.

Witness: Kyle A. Tucker



Renewal Date: June 30, 2021



I used a steel tape and magnetic compass in the establishment of the new accessories. I used 14° East declination, the distances are to a 60d spike driven into the right side of the root crown of the bearing trees. A brass washer marked OPLS 83571 is attached to the BT blaze of the new bearing trees.

HORIZONTAL CONTROL DATA
UNION COUNTY, OREGON
OREGON STATE PLANE, NORTH ZONE (3601)

STA NAME: 2020038

1/4 SECTION CORNER COMMON TO SECTIONS 12 AND 13

TWP. 2 N RGE. 39 E.

GEODETIC COORD: NAD 83(91)

DATE TIED: June 5, 2020

LAT: 45 ° 39 ' 37.29635 " N

SURVEYOR: JEFFREY S. HSU
OPLS 83571

LONG: 117 ° 52 ' 49.16054 " W

FIRM: BAGETT, GRIFFITH, & BLACKMAN
2006 ADAMS AVENUE
LAGRANDE, OR 97850
(541) 963-6092

SP. COOR: NAD 83(91)

N: 737714.614 INT FT.

E: 8871775.334 INT FT.

TYPE: GPS

THETA: 1 ° 51 ' 28.2194703 "

ORDER: SECOND CLASS: 1

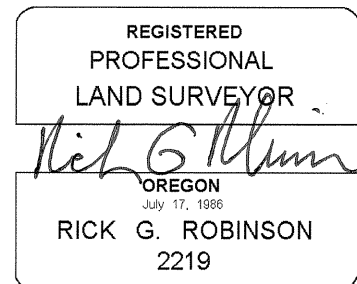
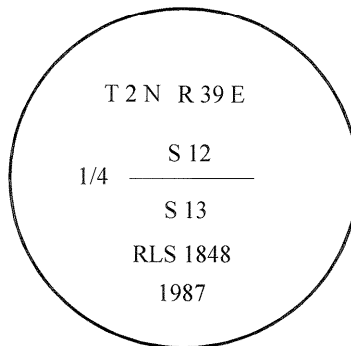
SCALE FACTOR: 0.9999313782

ELEV: 3258.11 US FT.

ELEV: DATUM: NGVD 29

COMMENTS:

5/8" iron pin with 1 1/2" aluminum cap
marked as shown



Renewal Date: December 31, 2020

1 METER = 3.2808333333... US FEET = 39.37 INCHES

1 METER = 3.280839895 INT'L FEET OR 1 INCH = 2.54 CM

TO CALCULATE ELEVATION FACTOR (IN THE NORTH AMERICAN CONTINENT)

DIVIDE 20,906,000 BY (20,906,000 + ELLIPSOID ELEV. IN FEET)