

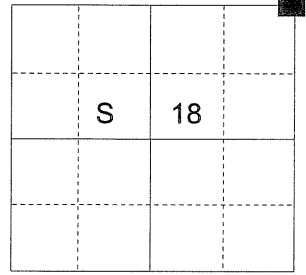
**UNION COUNTY SURVEYOR**  
**CERTIFIED RECORD OF LAND CORNER MONUMENTATION**

**HISTORY OF ORIGINAL CORNER ESTABLISHMENT:**

Corner originally established by Rufus S. Moore under GLO contract number 382, dated March 23rd, 1881. GLO record states:

- Set post for cor to secs 7, 8, 17, & 18 from which;
- A Fir 10 ins diam bears N71°E, 38 lks dist
- A Fir 12 ins diam bears N42°W, 36 lks dist
- A Fir 9 ins diam bears S26°W, 54 lks dist
- A Fir 30 ins diam bears S53°E, 30 lks dist

T 2 N R 39 E J-05



No record of subsequent monumentation found in UNION COUNTY survey records.  
 See Union County Survey 015-2005

**DESCRIPTION OF CORNER EVIDENCE FOUND:**

Found no evidence of the original corner monument or accessories. Used topography calls on the creek to the South and West to place the corner.

**DESCRIPTION OF MONUMENT AND ACCESSORIES I ESTABLISHED TO PERPETUATE THE ORIGINAL LOCATION OF THIS CORNER:**

At the position determined by topography calls, I set a 5/8"x30" iron "copper clad" pin with 2½" brass cap marked as shown, 36" in the ground on the South edge of an existing forest road, from which:

**NEW BEARING TREES:**

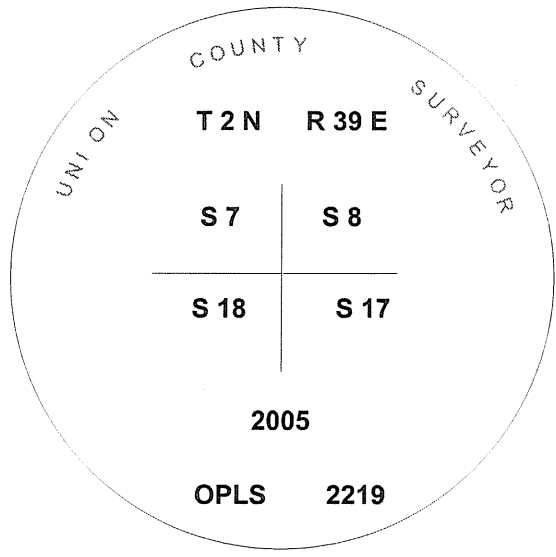
- A 10 inch diameter Douglas Fir bears N 55°E, a distance of 154.06 feet, marked T2N R39E S8 BT
- A 9 inch diameter Douglas Fir bears S 44°E, a distance of 36.50 feet, marked T2N R39E S17 BT
- A 10 inch diameter Tamarack bears S 72°W, a distance of 68.10 feet, marked T2N R39E S18 BT
- A 14 inch diameter Ponderosa Pine bears N 32°W, a distance of 105.40 feet, marked T2N R39E S7 BT

I hereby certify that the corner was monumented on June 30, 2005.  
 Witnesses: Greg Blackman Jr., Mark Brooks and Rick Thew

REGISTERED  
PROFESSIONAL  
LAND SURVEYOR

OREGON  
July 17, 1966  
RICK G. ROBINSON  
2219

Renewal Date: December 31, 2006



**UNION COUNTY SURVEYOR**

Date Received 7/1/05

Date Filed 7/1/05

Filed By [Signature]

File Number 005-2005R

I used a steel tape and magnetic compass in the establishment of the new accessories. I used 17° East declination, the distances are to a 60d spike driven into the right side of the root crown of the new bearing trees. A brass washer marked OPLS 2219 is attached to the BT blaze of the new bearing trees.

# HORIZONTAL CONTROL DATA

## UNION COUNTY, OREGON

### OREGON STATE PLANE, NORTH ZONE (3601)

STA NAME: 200510

SECTION CORNER COMMON TO SECTIONS: 7, 8, 17, and 18

TWP. 2 N. RGE. 39 E.

GEODETIC COORD: NAD 83(91)

DATE TIED: June 30, 2005

LAT: 45 ° 39 ' 36.84253 " N

SURVEYOR: RICK G. ROBINSON  
OPLS 2219

LONG: 117 ° 58 ' 25.18739 " W

FIRM: BAGETT, GRIFFITH, & BLACKMAN  
2006 ADAMS AVENUE  
LAGRANDE, OR 97850  
(541) 963-6092

SP. COOR: NAD 83(91)

N: 736908.748 INT FT.

E: 8847923.722 INT FT.

TYPE: GPS

THETA: 1 ° 47 ' 29.9088462 "

ORDER: SECOND CLASS: 1

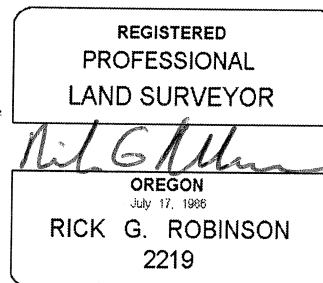
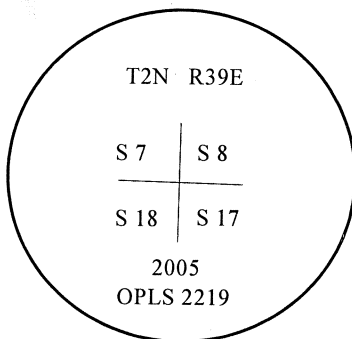
SCALE FACTOR: 0.999931363

ELEV: 3848.48 US FT.

ELEV: DATUM: NGVD 29

#### COMMENTS:

Corner is 2 1/2" Brass Cap on a 5/8"x30"  
copper clad" iron pin, marked as shown:



1 METER = 3.2808333333... US FEET = 39.37 INCHES

1 METER = 3.280839895 INT'L FEET OR 1 INCH = 2.54 CM

TO CALCULATE ELEVATION FACTOR ( IN THE NORTH AMERICAN CONTINENT)

DIVIDE 20,906,000 BY (20,906,000 + ELLIPSOID ELEV. IN FEET)