

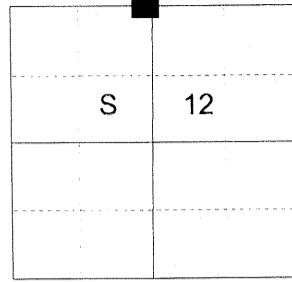
**CERTIFIED RECORD OF LAND CORNER MONUMENTATION**

**HISTORY OF ORIGINAL CORNER ESTABLISHED:**

Corner originally established by Rufus Moore under GLO joint contract number 382 dated March 23, 1881. Surveyor General field notes state:

Set post for 1/4 section corner from which:  
A pine 5 ins. diam bears N 53° W 12 lks dist  
A pine 5 ins. diam bears S 46° E 7 lks dist

T 2 N R 39 E E-23



**DESCRIPTION OF CORNER EVIDENCE FOUND:**

None Found

See Survey Number 013-2020

**DESCRIPTION OF MONUMENT AND ACCESSORIES I ESTABLISHED TO MONUMENT THE ORIGINAL LOCATION OF THIS CORNER:**

At proportionate position, I set a 2 1/2" aluminum pipe 28" in the ground, with 3" aluminum cap marked as shown below, in a 2 ft. diam. collar of stone, from which:

**NEW BEARING OBJECTS:**

A 17" Western Larch bears North 46° East a dist. of 55.75 ft., marked 1/4 S1 BT.  
An 11" Douglas Fir bears South 45° East a dist. of 103.40 ft., marked 1/4 S12 BT.  
A 4" Douglas Fir bears South 43° West a dist. of 61.40 ft., marked 1/4 S12 BT.  
A 9" Douglas Fir bears North 36° West a dist. of 18.65 ft., marked 1/4 S1 BT.

Set steel fence post approx. 1 ft. East

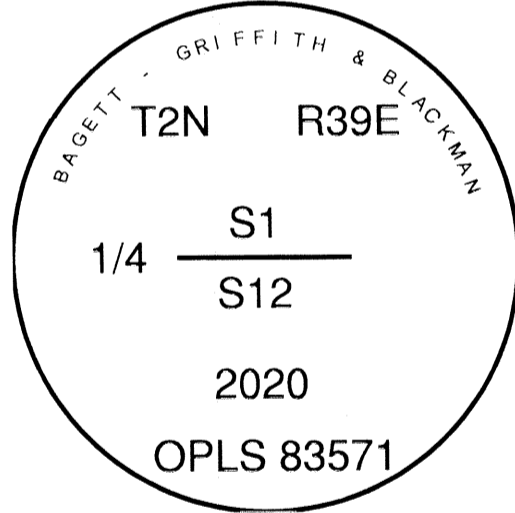
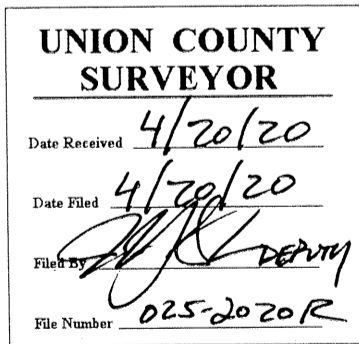
A fence corner from which fences run East and South bears North 46° East 55.75 ft. (the Northeast bearing tree is also the fence corner)

I hereby certify that the corner was perpetuated on April 14, 2020.

Witness: Kyle A. Tucker



Renewal Date: June 30, 2021



I used a steel tape and magnetic compass in the establishment of the new accessories. I used 14° East declination, the distances are to a 60d spike driven into the right side of the root crown of the bearing trees. A brass washer marked OPLS 83571 is attached to the BT blaze of the new bearing trees.

# HORIZONTAL CONTROL DATA

## UNION COUNTY, OREGON

### OREGON STATE PLANE, NORTH ZONE (3601)

STA NAME: 2020037

1/4 SECTION CORNER COMMON TO SECTIONS 1 AND 12

TWP. 2 N RGE. 39 E.

GEODETIC COORD: NAD 83(91)

DATE TIED: June 5, 2020

LAT: 45 ° 40 ' 29.78495 " N

SURVEYOR: JEFFREY S. HSU  
OPLS 83571

LONG: 117 ° 52 ' 48.71697 " W

FIRM: BAGETT, GRIFFITH, & BLACKMAN  
2006 ADAMS AVENUE  
LAGRANDE, OR 97850  
(541) 963-6092

SP. COOR: NAD 83(91)

N: 743029.115 INT FT.

E: 8871634.461 INT FT.

TYPE: GPS

THETA: 1 ° 51 ' 28.5340487 "

ORDER: SECOND CLASS: 1

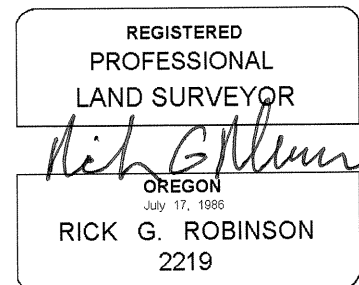
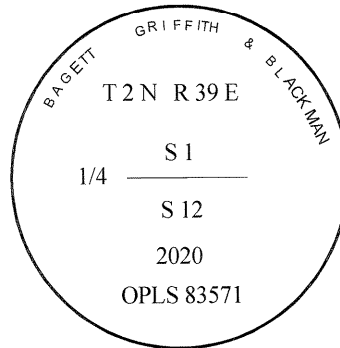
SCALE FACTOR: 0.9999335965

ELEV: 3016.07 US FT.

ELEV: DATUM: NGVD 29

**COMMENTS:**

2 1/2" aluminum pipe with 2 1/2" aluminum cap  
marked as shown, set in mound of stone



Renewal Date: December 31, 2020

1 METER = 3.2808333333... US FEET = 39.37 INCHES

1 METER = 3.280839895 INT'L FEET OR 1 INCH = 2.54 CM

TO CALCULATE ELEVATION FACTOR ( IN THE NORTH AMERICAN CONTINENT)

DIVIDE 20,906,000 BY (20,906,000 + ELLIPSOID ELEV. IN FEET)