

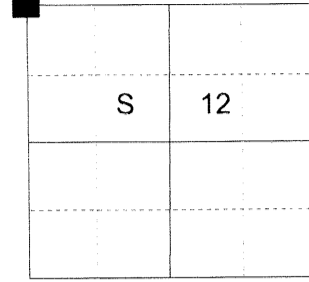
CERTIFIED RECORD OF LAND CORNER MONUMENTATION

HISTORY OF ORIGINAL CORNER ESTABLISHED:

Corner originally established by Rufus Moore under GLO joint contract number 382 dated March 23, 1881. Surveyor General field notes state:

Set post for corner to secs. 1, 2, 11, and 12 from which:
A Fir 24 ins. diam bears N 61° E 32 lks dist
A Fir 7 ins. diam bears N 30° W 65 lks dist
A Fir 9 ins. diam bears S 45° W 5 lks dist
A Tamarac 26 ins. diam bears S 22° E 62 lks dist

T 2 N R 39 E E-21



DESCRIPTION OF CORNER EVIDENCE FOUND:

None Found.

See Survey 013-2020

DESCRIPTION OF MONUMENT AND ACCESSORIES I ESTABLISHED TO MONUMENT THE ORIGINAL LOCATION OF THIS CORNER:

At proportionate position I set a 2 1/2" aluminum pipe, 28" in the ground, with 3" aluminum cap marked as shown below in a 2 ft. diam. collar of stone, from which:

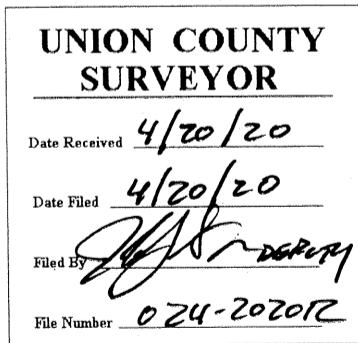
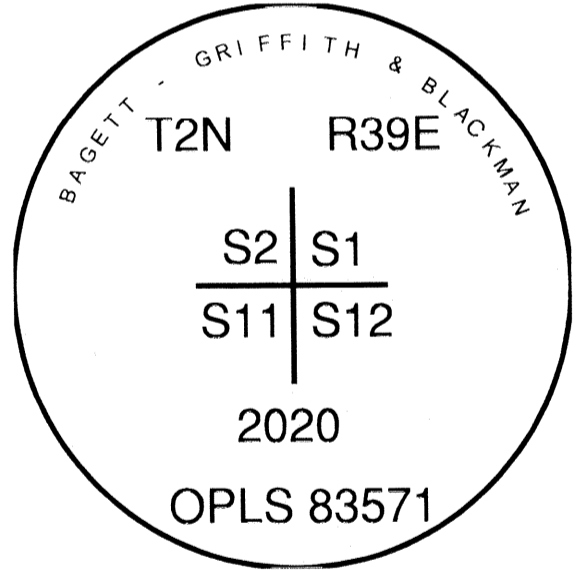
NEW BEARING OBJECTS:

A 12" White Fir bears North 48° East a dist. of 42.40 ft., marked T2N R39E S1 BT.
A 27" Ponderosa Pine bears South 64° East a dist. of 121.70 ft., marked T2N R39E S12 BT.
A 4" Douglas Fir bears South 66° West a dist. of 56.60 ft., marked X BT.
A 3" Douglas Fir bears North 83° West a dist. of 53.45 ft., marked Y BT.

Set steel fence post approx. 1 ft. North

Falls approx. 100 ft. West of North/South forest road

I hereby certify that the corner was perpetuated on April 14, 2020.
Witness: Kyle A. Tucker



I used a steel tape and magnetic compass in the establishment of the new accessories. I used 14° East declination, the distances are to a 60d spike driven into the right side of the root crown of the bearing trees. A brass washer marked OPLS 83571 is attached to the BT blaze of the new bearing trees.

HORIZONTAL CONTROL DATA

UNION COUNTY, OREGON

OREGON STATE PLANE, NORTH ZONE (3601)

STA NAME: 2020036

SECTION CORNER COMMON TO SECTIONS 1, 2, 11 AND 12

TWP. 2 N RGE. 39 E.

GEODETIC COORD: NAD 83(91)

DATE TIED: June 5, 2020

LAT: 45 ° 40 ' 29.68618 " N

SURVEYOR: JEFFREY S. HSU
OPLS 83571

LONG: 117 ° 53 ' 25.67045 " W

FIRM: BAGETT, GRIFFITH, & BLACKMAN
2006 ADAMS AVENUE
LAGRANDE, OR 97850
(541) 963-6092

SP. COOR: NAD 83(91)

N: 742934.215 INT FT.

E: 8869012.339 INT FT.

TYPE: GPS

THETA: 1 ° 51 ' 2.32715534 "

ORDER: SECOND CLASS: 1

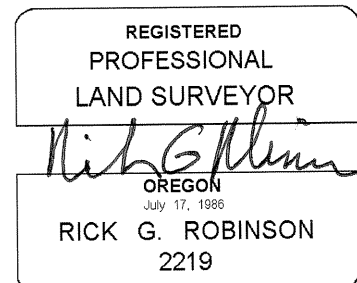
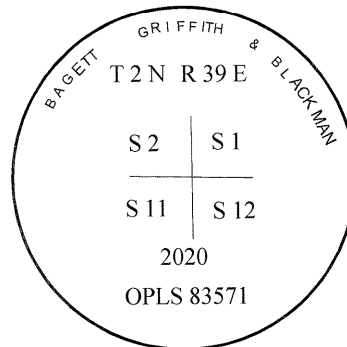
SCALE FACTOR: 0.9999335923

ELEV: 3049.81 US FT.

ELEV: DATUM: NGVD 29

COMMENTS:

2 1/2" aluminum pipe with 2 1/2" aluminum cap
marked as shown, set in mound of stone



Renewal Date: December 31, 2020

1 METER = 3.2808333333... US FEET = 39.37 INCHES

1 METER = 3.280839895 INT'L FEET OR 1 INCH = 2.54 CM

TO CALCULATE ELEVATION FACTOR (IN THE NORTH AMERICAN CONTINENT)

DIVIDE 20,906,000 BY (20,906,000 + ELLIPSOID ELEV. IN FEET)