

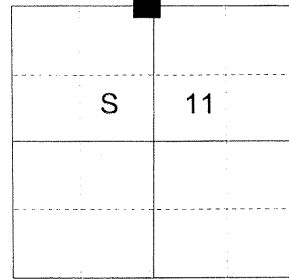
CERTIFIED RECORD OF LAND CORNER MONUMENTATION

HISTORY OF ORIGINAL CORNER ESTABLISHED:

Corner originally established by Rufus Moore under GLO joint contract number 382 dated March 23, 1881. Surveyor General field notes state:

Set post for 1/4 section corner from which:
 A pine 36 ins. diam bears N 61° W 43 lks dist
 A fir 4 ins. diam bears S 45° W 23 lks dist

T 2 N R 39 E E-19



DESCRIPTION OF CORNER EVIDENCE FOUND:

None Found

See Survey 013-2020

DESCRIPTION OF MONUMENT AND ACCESSORIES I ESTABLISHED TO MONUMENT THE ORIGINAL LOCATION OF THIS CORNER:

At proportionate position I set a 2 1/2" aluminum pipe, 21" in the ground, with 3" aluminum cap marked as shown below, in a 1.5 ft. diam. collar of stone, from which:

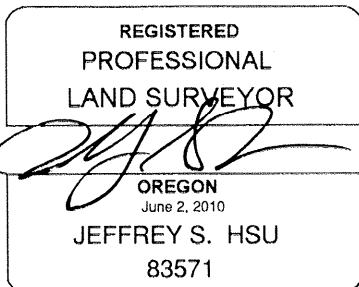
NEW BEARING OBJECTS:

A 7" Douglas Fir bears North 73° East a dist. of 48.70 ft., marked 1/4 S2 BT.
 A 4" Western Larch bears South 80° East a dist. of 32.00 ft., marked 1/4 S11 BT.
 A 5" Western Larch bears South 39° West a dist. of 29.00 ft., marked 1/4 S11 BT.
 A 6" Douglas Fir bears North 57° West a dist. of 29.70 ft., marked 1/4 S2 BT.

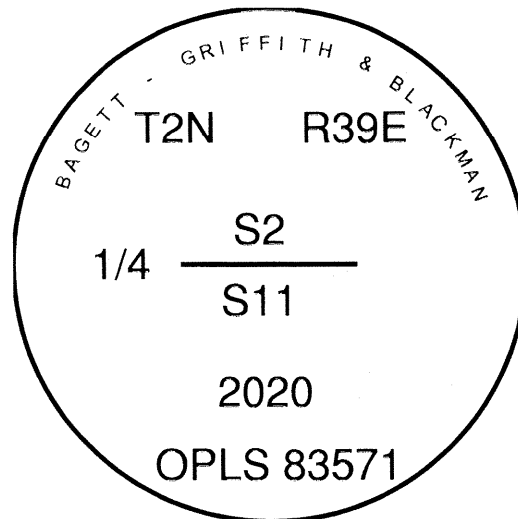
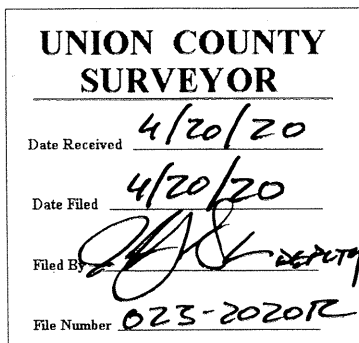
Set steel fence post approx. 1 ft. West

Falls approx. 60 ft. East of Northeasterly/Southwesterly bearing forest road.

I hereby certify that the corner was monumented on April 14, 2020.
 Witness: Kyle A. Tucker



Renewal Date: June 30, 2021



I used a steel tape and magnetic compass in the establishment of the new accessories. I used 14° East declination, the distances are to a 60d spike driven into the right side of the root crown of the bearing trees. A brass washer marked OPLS 83571 is attached to the BT blaze of the new bearing trees.