

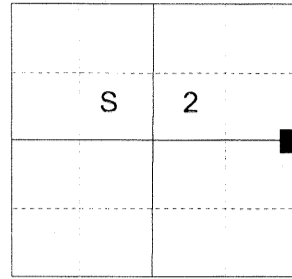
CERTIFIED RECORD OF LAND CORNER MONUMENTATION

HISTORY OF ORIGINAL CORNER ESTABLISHED:

Corner originally established by Rufus Moore under GLO joint contract number 382 dated March 23, 1881. Surveyor General field notes state:

Set post for 1/4 section corner from which:
A pine 10 ins. diam bears N 81° E 20 lks dist
A pine 6 ins. diam bears S 35° W 29 lks dist

T 2 N R 39 E C-21



DESCRIPTION OF CORNER EVIDENCE FOUND:

Found a fence corner with evidence showing it has been repaired/replaced in the same location as ancient fences. The corner falls within 7' of a proportioned position.

See Survey 013-2020

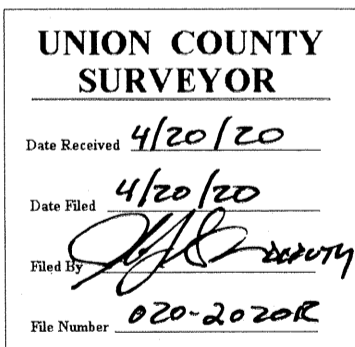
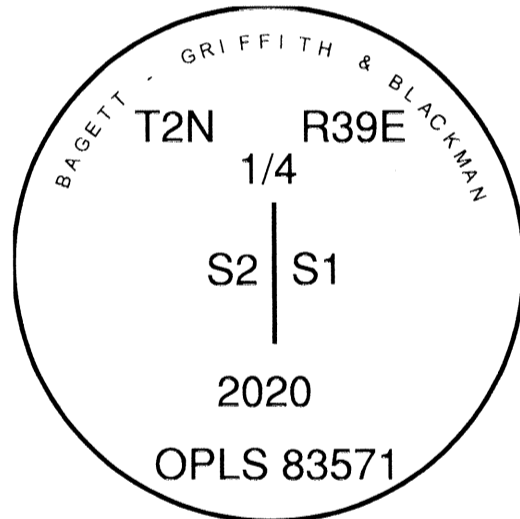
DESCRIPTION OF MONUMENT AND ACCESSORIES I ESTABLISHED TO MONUMENT THE ORIGINAL LOCATION OF THIS CORNER:

At the position of the found fence corner I set a 2 1/2" aluminum pipe, 29" in the ground, with 3" aluminum cap marked as shown below, in a 1 ft. diam. collar of stone, from which:

NEW BEARING OBJECTS:

A 10" White Fir bears North 48° East a dist. of 13.05 ft., marked 1/4 S1 BT.
A 5" Douglas Fir bears South 56° East a dist. of 37.80 ft., marked 1/4 S1 BT.
A 12" White Fir bears South 69° West a dist. of 14.90 ft., marked 1/4 S2 BT.
An 18" Douglas Fir bears North 61° West a dist. of 41.05 ft., marked 1/4 S2 BT.

I hereby certify that the corner was monumented on April 14, 2020.
Witness: Kyle A. Tucker



I used a steel tape and magnetic compass in the establishment of the new accessories. I used 14° East declination, the distances are to a 60d spike driven into the side of the root crown of the bearing trees. A brass washer marked OPLS 83571 is attached to the BT blaze of the new bearing trees.

HORIZONTAL CONTROL DATA
UNION COUNTY, OREGON
OREGON STATE PLANE, NORTH ZONE (3601)

STA NAME: 2020034

1/4 SECTION CORNER COMMON TO SECTIONS 1 AND 2

TWP. 2 N RGE. 39 E.

GEODETIC COORD: NAD 83(91)

DATE TIED: June 1, 2020

LAT: 45 ° 40 ' 55.85496 " N

SURVEYOR: JEFFREY S. HSU
OPLS 83571

LONG: 117 ° 53 ' 26.05910 " W

FIRM: BAGETT, GRIFFITH, & BLACKMAN
2006 ADAMS AVENUE
LAGRANDE, OR 97850
(541) 963-6092

SP. COOR: NAD 83(91)

N: 745582.440 INT FT.

E: 8868899.166 INT FT.

TYPE: GPS

THETA: 1 ° 51 ' 2.05153291 "

ORDER: SECOND CLASS: 1

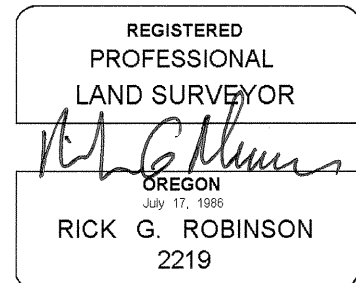
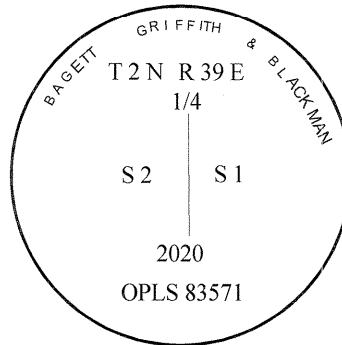
SCALE FACTOR: 0.9999347225

ELEV: 2936.79 US FT.

ELEV: DATUM: NGVD 29

COMMENTS:

2 1/2" aluminum pipe with 2 1/2" aluminum cap
marked as shown



Renewal Date: December 31, 2020

1 METER = 3.2808333333... US FEET = 39.37 INCHES

1 METER = 3.280839895 INT'L FEET OR 1 INCH = 2.54 CM

TO CALCULATE ELEVATION FACTOR (IN THE NORTH AMERICAN CONTINENT)

DIVIDE 20,906,000 BY (20,906,000 + ELLIPSOID ELEV. IN FEET)