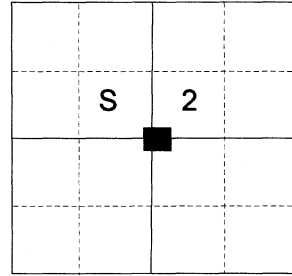


CERTIFIED RECORD OF LAND CORNER MONUMENTATION

HISTORY OF ORIGINAL CORNER ESTABLISHED:

Corner not previously established

T 2 N R 39 E C-19



DESCRIPTION OF CORNER EVIDENCE FOUND:

None.

See Survey Number: 022-2022

DESCRIPTION OF MONUMENT AND ACCESSORIES I ESTABLISHED TO MONUMENT THE ORIGINAL LOCATION OF THIS CORNER:

At position determined by survey, I set a 2 1/2" x 30" aluminum pipe, 30" in the ground, with 3" aluminum cap, marked as shown below and in a 2 ft. diam. collar of stone, from which:

NEW BEARING OBJECT:

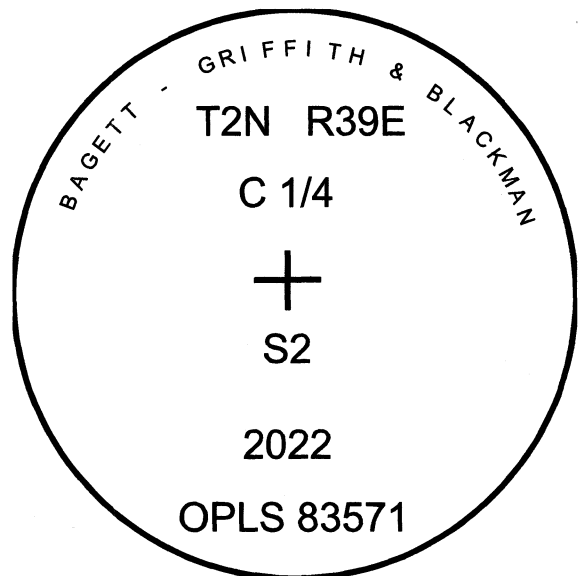
- A 6" Douglas Fir bears North 18° East, a dist. of 27.50 feet scribed C1/4 S2 BT
- A 8" Douglas Fir bears South 13° East, a dist. of 7.50 feet scribed C1/4 S2 BT
- A 6" Douglas Fir bears South 67° West, a dist. of 11.55 feet scribed C1/4 S2 BT
- A 4" Ponderosa Pine bears North 42° West, a dist. of 13.55 feet scribed C1/4 S2 BT

Set steel fence post approx. 1 ft. East

Monument falls approx. 50 feet Southeasterly of fence corner to East/North bearing fence lines. (Approx. 10 feet South of the East/West fence line.)

I hereby certify that the corner was monumented on July 6, 2022.

Witness: Kyle Tucker and Dan Drum



REGISTERED
PROFESSIONAL
LAND SURVEYOR

OREGON
June 2, 2010
JEFFREY S. HSU
83571

Renewal Date: June 30, 2023

**UNION COUNTY
SURVEYOR**

Date Received 7/14/22

Date Filed 7/14/22

Filed By M. G. Deary

File Number 023-2022R

I used a steel tape and magnetic compass in the establishment of the new accessories. I used 14° East declination, the distances are to a 60d spike driven into the right side of the root crown of the bearing trees. A brass washer marked OPLS 83571 is attached to the BT blaze of the new bearing trees.