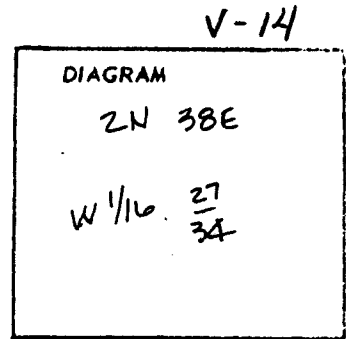


CERTIFIED RECORD OF LAND CORNER MONUMENTATION

History of original corner establishment:

Corner not previously established.



Description of corner evidence found:

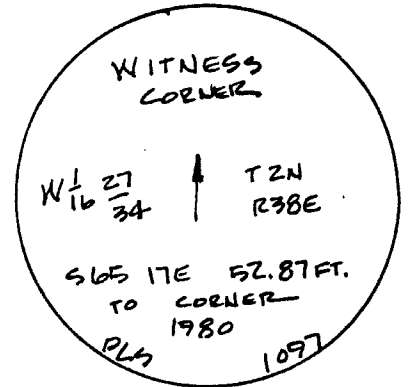
N/A

**REGISTERED
PROFESSIONAL
LAND SURVEYOR**

Witness corner is a 2½" aluminum cap on a 2½" aluminum pipe 30" long set in stone mound. Steel post 2' NW with 54-4 sign and BT poster.

James H. Buisman

**OREGON
JULY 22, 1977
JAMES H. BUISMAN
1097**



Description of monument and accessories I established to perpetuate the original location of this corner

At the position described above, I set a 2½" aluminum cap on a 2½" x 30" aluminum pipe 10" in the ground marked as shown. I raised a stone mound around the cap.

From which I scribed BTs:

- A pine 17" in diam. bears S 02° 20' W 120.6' scribed W 1/16 S 34. BT.
- A witness cap bears N 65° 17' W 52.87' marked as shown above.

I nailed a brass washer marked OPLS 1097 to BT blazes.

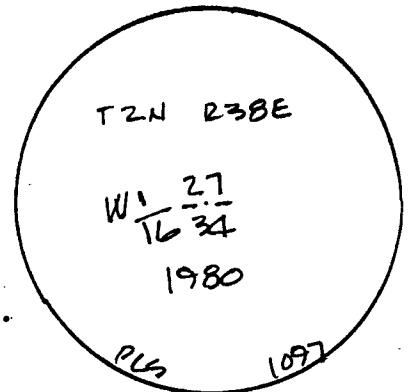
I set a steel fence post 5' South and 5' West with signs 54-2 and 4 and 54-2.

I painted a red band around BTs and face of scribe.

I used a steel tape and Wild T-2 and measured a horizontal distance to the center of the BTs.

This corner was set October 26, 1980. Witness by Patrick L. Murphy.

See map of survey.



Office of..... County of.....
 State of....., I hereby certify that the within instrument was filed in this office
 for record on the day of.....
 by
 (COUNTY OFFICIAL) (DEPUTY)

**UNION COUNTY
SURVEYOR**

Date Received _____

Date Filed _____

By _____

File No. 241-83R