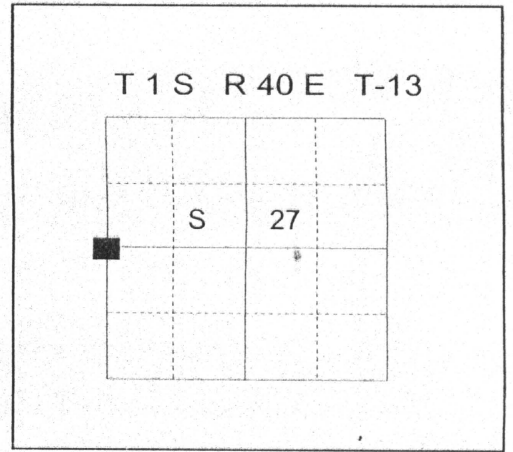


CERTIFIED RECORD OF LAND CORNER MONUMENTATION

HISTORY OF ORIGINAL CORNER ESTABLISHMENT:

Corner established by Henry Meldrum under GLO Contract number 450, dated June 11, 1882. Surveyor General record states: Set a post 3 ft. long for 1/4 corner, marked 1/4 sec. cor, From Which:
A fir 12 inches in diameter bears N43°E, 41 lks. Marked 1/4 S BT.
A fir 12 inches in diameter bears S28°W, 15 lks, marked 1/4 S BT.
No record of subsequent monumentation found in UNION COUNTY survey records.



DESCRIPTION OF CORNER EVIDENCE FOUND:

Found SW BT, high stumped, 18" diameter, opened and found scribes

DESCRIPTION OF MONUMENT AND ACCESSORIES I ESTABLISHED

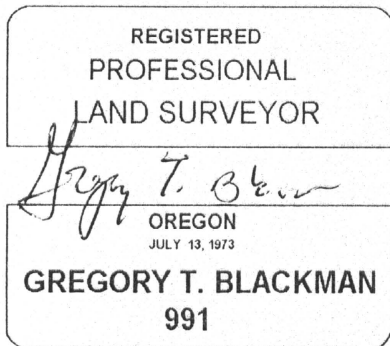
TO PERPETUATE THE ORIGINAL LOCATION OF THIS CORNER:

At record bearing and distance from found BT, I set a 2 1/2"x30" aluminum pipe with aluminum cap marked as shown below, 28" in the ground, from which:

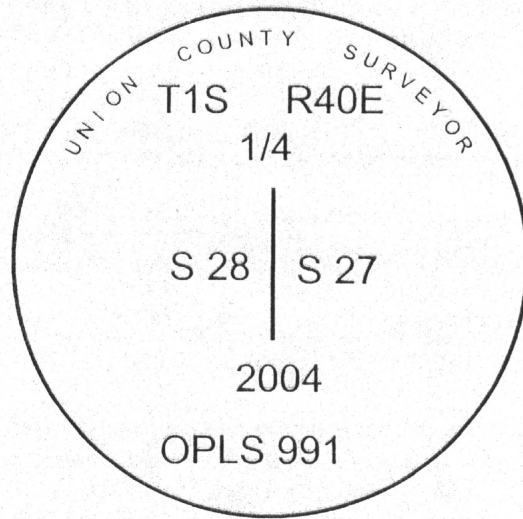
NEW BEARING TREES AND OBJECT:

- A 12" diameter White Fir bears N 57°E, a distance of 20.60 feet, marked "X" BT"
- A 6" diameter White Fir bears S 7°W, a distance of 57.35 feet, marked 1/4 S28 BT.
- An 8" diameter Western Larch bears S 53°W, a distance of 51.15 feet, marked "X" BT"
- A 5/8"x30" iron pin with 1 inch aluminum cap marked NW RP bears N 17°W, a distance of 16.45 feet,

I hereby certify that the corner was monumented on November 26, 2004.
Witness: Greg Blackman, Jr.



Renewal Date: December 31, 2005



UNION COUNTY SURVEYOR
Date Received 12/31/04
Date Filed 2/8/04
Filed By R. Robinson Dorsey
File Number 001-2005 R

I used a steel tape and magnetic compass in the establishment of new bearing trees. The magnetic declination used was 18° East. The distance to the bearing tree is to a 50d spike driven on the right side of the tree at the root crown. I attached a brass washer marked OPLS 991 to the BT blaze. Distance to bearing object is to the center of the Aluminum cap.

**RECOVERY NOTES
BOISE CASCADE CORP.
PROPERTY CORNER INVESTIGATION**

<p>LOCATION</p>	T. <u>1S</u>	R. <u>40E</u>
	Mer. _____	State <u>OR</u>
	Forest _____	Dist. <u>Elgin</u>
	Compartment or Tract <u>Mt. Harris</u>	
	LEGEND	
<input type="radio"/>	Corner searched-no evidence	
<input checked="" type="radio"/>	Corner or accessory found	
<input checked="" type="radio"/>	Corner marked by perm. mon.	

DESCRIPTION OF FOUND CORNER

MATERIAL: _____ SIZE: _____

HEIGHT ABOVE GROUND: _____ CONDITION: _____

MARKINGS: _____

*One location tag and BT tag are present
Location tag on road 5ch. east of Cox
A portion of the original 3in.² post is present but
it has been moved. One marked BT is present
12" dia (over 2.5") S28W 98 FT dist. - Sec 28
(SW quadrant). No sign of the second BT.
Area will be logged through in 1983. BT was marked
to high stump*

Note: Indicate full investigative details on back of form and where
cruise tag placed in reference to corner.

PHOTO IDENTIFICATION

Symbol & date 1982 Line or Roll 19A Exposure 9

How Identified _____ Where filed _____

RECOVERED BY: D.M.

DATE: 12/22/83 TITLE: _____

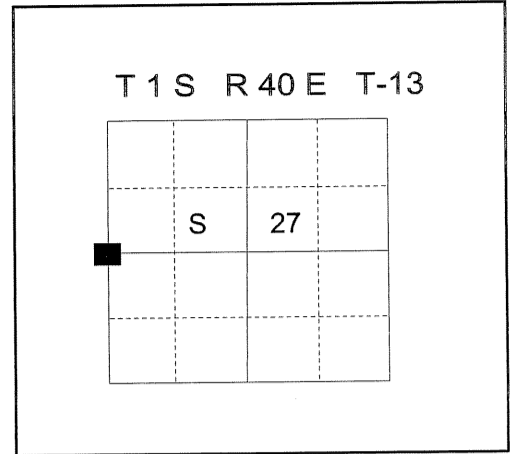
UNION COUNTY SURVEYOR	
Date Received	<u>1-4-88</u>
Date Filed	<u>1-7-88</u>
By	<u>G. LANGLITZ, DEPUTY</u>
File No.	<u>24-88R</u>

T-13

CERTIFIED RECORD OF LAND CORNER MONUMENTATION

HISTORY OF ORIGINAL CORNER ESTABLISHMENT:

Corner established by Henry Meldrum under GLO Contract number 450, dated June 11, 1882. Surveyor General record states: Set a post 3 ft. long for ¼ corner, marked ¼ sec. cor, From Which:
 A fir 12 inches in diameter bears N43°E, 41 lks. Marked ¼ S BT.
 A fir 12 inches in diameter bears S28°W, 15 lks, marked ¼ S BT.
 No record of subsequent monumentation found in UNION COUNTY survey records.



DESCRIPTION OF CORNER EVIDENCE FOUND:

Found SW BT, high stumped, 18" diameter, opened and found scribes

DESCRIPTION OF MONUMENT AND ACCESSORIES I ESTABLISHED

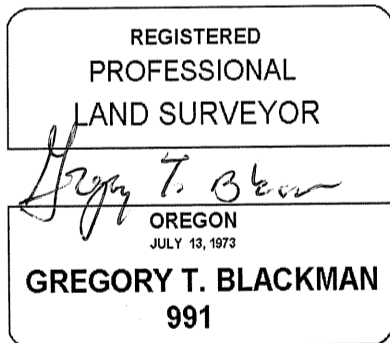
TO PERPETUATE THE ORIGINAL LOCATION OF THIS CORNER:

At record bearing and distance from found BT, I set a 2½x30" aluminum pipe with aluminum cap marked as shown below, 28" in the ground, from which:

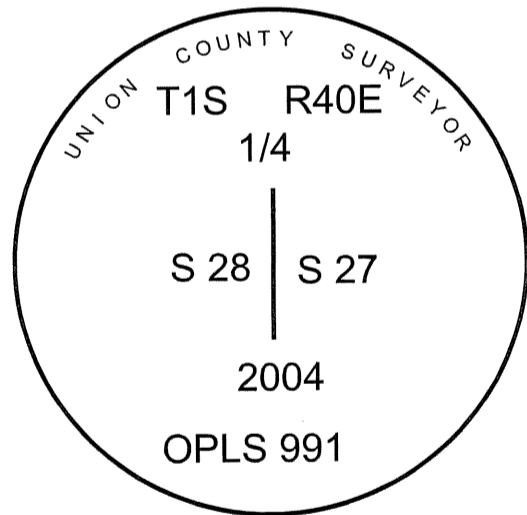
NEW BEARING TREES AND OBJECT:

A 12" diameter White Fir bears N 57°E, a distance of 20.60 feet, marked "X" BT"
 A 6" diameter White Fir bears S 7°W, a distance of 57.35 feet, marked ¼ S28 BT.
 An 8" diameter Western Larch bears S 53°W, a distance of 51.15 feet, marked "X" BT"
 A 5/8"x30" iron pin with 1 inch aluminum cap marked NW RP bears N 17°W, a distance of 16.45 feet,

I hereby certify that the corner was monumented on November 26, 2004.
 Witness: Greg Blackman, Jr.



Renewal Date: December 31, 2005



UNION COUNTY SURVEYOR

Date Received 12/31/04

Date Filed 2/8/04

Filed By R. Robinson, Deputy

File Number 001-2005R

I used a steel tape and magnetic compass in the establishment of new bearing trees. The magnetic declination used was 18° East. The distance to the bearing tree is to a 50d spike driven on the right side of the tree at the root crown. I attached a brass washer marked OPLS 991 to the BT blaze. Distance to bearing object is to the center of the Aluminum cap.

HORIZONTAL CONTROL DATA

UNION COUNTY, OREGON

OREGON STATE PLANE, NORTH ZONE (3601)

STA NAME: 200501

1/4 SECTION CORNER COMMON TO SECTIONS: 27 and 28

TWP. 1 S. RGE. 40 E.

GEODETIC COORD: NAD 83(91)

DATE TIED: December 2004

LAT: 45 ° 26 ' 57.96341 " N

SURVEYOR: GREGORY T. BLACKMAN
OPLS 991

LONG: 117 ° 48 ' 31.72738 " W

FIRM: BAGETT, GRIFFITH, & BLACKMAN
2006 ADAMS AVENUE
LAGRANDE, OR 97850
(541) 963-6092

SP. COOR: NAD 83(91)

N: 661452.191 INT FT.

E: 8892610.066 INT FT.

TYPE: GPS

THETA: 1 ° 54 ' 30.9647447 "

ORDER: SECOND CLASS: 1

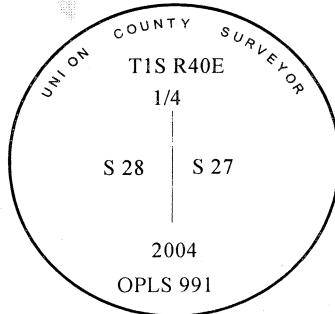
SCALE FACTOR: 0.9999065628

ELEV: 4361.34 US FT.

ELEV: DATUM: NGVD 29

COMMENTS:

Corner is 2 1/2" aluminum monument
marked as shown:



REGISTERED
PROFESSIONAL
LAND SURVEYOR

Gregory T. Blackman

OREGON
JULY 13, 1973
GREGORY T. BLACKMAN
991

Renewal Date: December 31, 2005

1 METER = 3.280833333... US FEET = 39.37 INCHES

1 METER = 3.280839895 INT'L FEET OR 1 INCH = 2.54 CM

TO CALCULATE ELEVATION FACTOR (IN THE NORTH AMERICAN CONTINENT)

DIVIDE 20,906,000 BY (20,906,000 + ELLIPSOID ELEV. IN FEET)