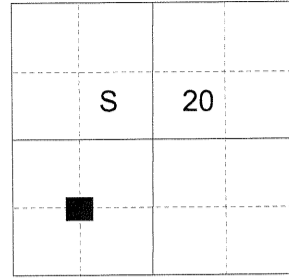


CERTIFIED RECORD OF LAND CORNER MONUMENTATION

HISTORY OF ORIGINAL CORNER ESTABLISHED:

Not previously Established.

T 1 S R 40 E Q-06



DESCRIPTION OF CORNER EVIDENCE FOUND:

Existing Boise Cascade Location tag on Northwest bearing tree

DESCRIPTION OF MONUMENT AND ACCESSORIES I ESTABLISHED TO MONUMENT THE LOCATION OF THIS CORNER:

At position determined by survey I set a 5/8" x 30" iron pin, 27" in the ground, with 2 1/2" aluminum cap marked as shown below, from which:

NEW BEARING OBJECTS:

A 5" Douglas Fir bears South 1° West a dist. of 5.70 ft., marked SW 1/16 S20 BT.
An 11" Douglas Fir bears North 37° West a dist. of 12.95 ft., marked SW 1/16 S20 BT.

Set fence post approx. 0.5 ft. North

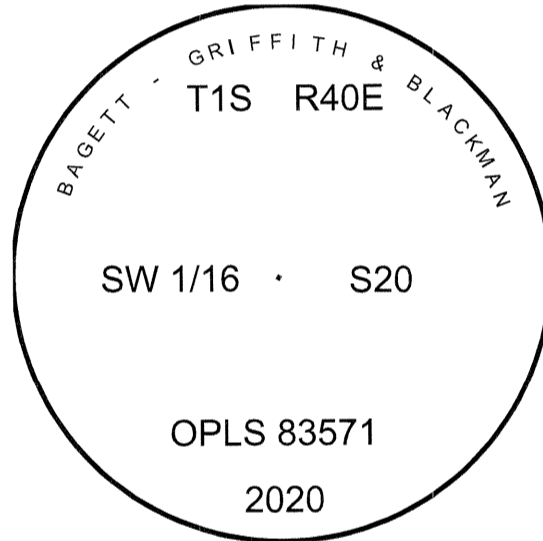
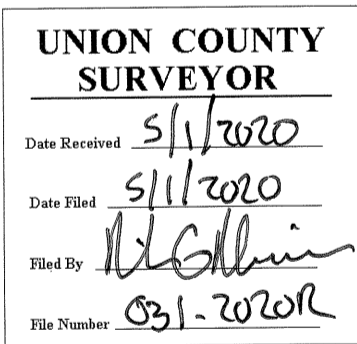
Fence corner to North and East bearing fence lines bears North 80° East approx. 12 ft.

I hereby certify that the corner was monumented on April 24, 2019.

Witness: Kyle A. Tucker



Renewal Date: June 30, 2021



I used a steel tape and magnetic compass in the establishment of the new accessories. I used 14° East declination, the distances are to a 60d spike driven into the right side of the root crown of the bearing trees. A brass washer marked OPLS 83571 is attached to the BT blaze of the new bearing trees.