

CERTIFIED RECORD OF LAND CORNER MONUMENTATION

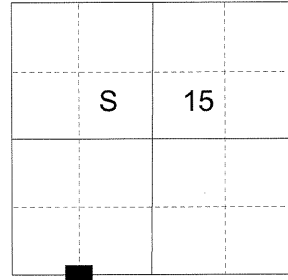
HISTORY OF ORIGINAL CORNER ESTABLISHED:

Corner not previously established

T 1 S R 40 E N-14

DESCRIPTION OF CORNER EVIDENCE FOUND:

None



See Survey Number 018-2015

DESCRIPTION OF MONUMENT AND ACCESSORIES I ESTABLISHED

TO PERPETUATE THE ORIGINAL LOCATION OF THIS CORNER:

At the position determined by survey, I set a 5/8" x 30" iron rod with a 2 1/2" aluminum cap marked as shown below, 27" in the ground with a collar of stone 2 foot diameter.

From which:

NEW BEARING OBJECTS:

A 13" Douglas Fir bears South 37° East, a distance of 29.10 feet, marked W 1/16 S22 BT.

A 5" Douglas Fir bears South 80° West, a distance of 16.95 feet, marked X BT.

No available trees to North.

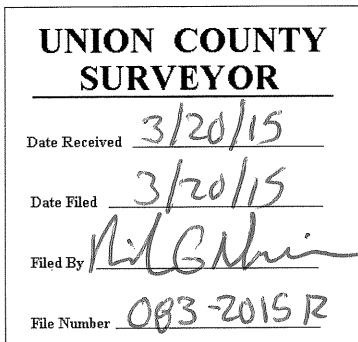
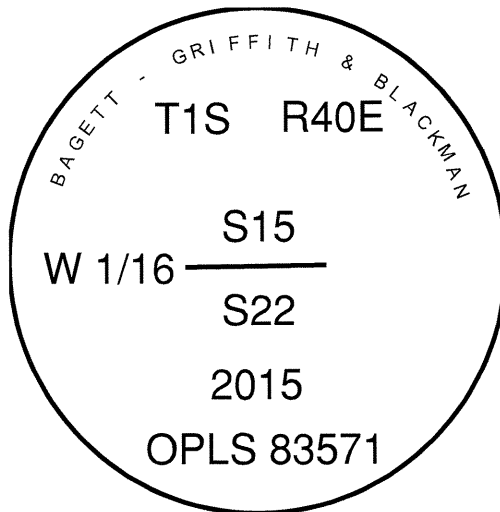
I set a steel fencepost approximately 1 foot North of corner monument.

I hereby certify that the corner was monumented on March 18, 2015.

Witness: Thomas J. Kopp



Renewal Date: June 30, 2015



I used a steel tape and magnetic compass in the establishment of the new accessories. I used 16° East declination, the distances are to a 60d spike driven into the right side of the root crown of the bearing trees. A brass washer marked OPLS 83571 is attached to the BT blaze of the new bearing trees.