

**CERTIFIED RECORD OF LAND CORNER MONUMENTATION**

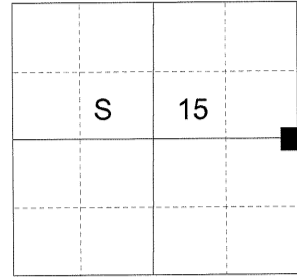
**HISTORY OF ORIGINAL CORNER ESTABLISHED:**

Corner originally established by Henry Meldrum, Deputy Surveyor under GLO Contract No. 450, dated June 11, 1882. Surveyor General's field notes state:

Set a basalt stone 18x10x4 ins. 12 ins. in ground for 1/4 sec. cor. marked 1/4 on W. face from which:

- A fir 7 ins. dia. bears N34°W 94 lks. dist - marked 1/4 S BT
- A pine 48 ins. dia. bears N54°E 39 lks. dist - marked 1/4 S BT

T 1 S R 40 E L-17



**DESCRIPTION OF CORNER EVIDENCE FOUND:**

None

See Survey Number 018-2015

**DESCRIPTION OF MONUMENT AND ACCESSORIES I ESTABLISHED TO PERPETUATE THE ORIGINAL LOCATION OF THIS CORNER:**

At a proportionate position, I set a 2 1/2" aluminum pipe with a 2 1/2" aluminum cap, marked as shown below, 27" in the ground with a mound of stone 3 foot diameter. From which:

**NEW BEARING OBJECTS:**

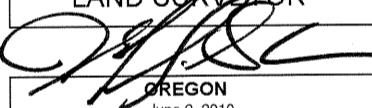
- A 9" Ponderosa Pine bears North 10° East, a distance of 89.90 feet, marked 1/4 S14 BT.
- A 5/8" x 30" iron rod bears South 27°08' East, a distance of 87.84 feet, with a 1 1/2" aluminum cap marked BGB SURVEY MARKER SE RP.
- An 8" Ponderosa Pine bears South 37° West, a distance of 118.00 feet, marked 1/4 S15 BT.
- A 19" Ponderosa Pine bears North 89° West, a distance of 112.05 feet, marked 1/4 S15 BT.

I set a steel fencepost approximately 1.5 feet North of corner monument.

I hereby certify that the corner was monumented on March 13, 2015.

Witness: Thomas J. Kopp

REGISTERED PROFESSIONAL LAND SURVEYOR



OREGON  
June 2, 2010  
JEFFREY S. HSU  
83571

Renewal Date: June 30, 2015

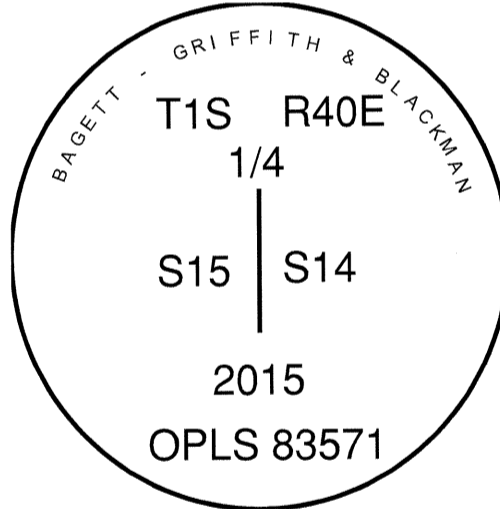
UNION COUNTY SURVEYOR

Date Received 3/20/15

Date Filed 3/20/15

Filed By [Signature]

File Number 084-201512



I used a Leica GS-15 RTK unit for the establishment of the bearing and distance of the iron pin accessory. Basis of bearing is as per Survey Number 018-2015. I used a steel tape and magnetic compass in the establishment of the tree accessories. I used 16° East declination, the distances are to a 60d spike driven into the right side of the root crown of the bearing trees. A brass washer marked OPLS 83571 is attached to the BT blaze of the new bearing trees.

# HORIZONTAL CONTROL DATA

## UNION COUNTY, OREGON

### OREGON STATE PLANE, NORTH ZONE (3601)

STA NAME: 201520

1/4 SECTION CORNER COMMON TO SECTIONS 14 AND 15

TWP. 1 S. RGE. 40 E.

GEODETIC COORD: NAD 83(91)

DATE TIED: March 16, 2015

LAT: 45 ° 28 ' 43.02285 " N

SURVEYOR: RICK G. ROBINSON  
OPLS 2219

LONG: 117 ° 47 ' 17.67251 " W

FIRM: BAGETT, GRIFFITH, & BLACKMAN  
2006 ADAMS AVENUE  
LAGRANDE, OR 97850  
(541) 963-6092

SP. COOR: NAD 83(91)

N: 672262.922 INT FT.

E: 8897529.116 INT FT.

TYPE: GPS

THETA: 1 ° 55 ' 23.3061481 "

ORDER: SECOND CLASS: 1

SCALE FACTOR: 0.9999091859

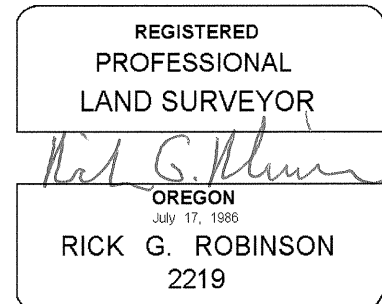
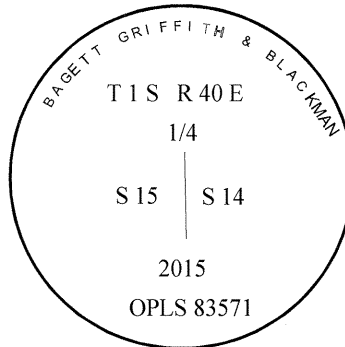
ELEV: 4403.37 US FT.

ELEV: DATUM: NGVD 29

---

#### COMMENTS:

2 1/2" aluminum cap monument marked  
as shown



Renewal Date: December 31, 2016

1 METER = 3.2808333333... US FEET = 39.37 INCHES

1 METER = 3.280839895 INT'L FEET OR 1 INCH = 2.54 CM

TO CALCULATE ELEVATION FACTOR ( IN THE NORTH AMERICAN CONTINENT)

DIVIDE 20,906,000 BY (20,906,000 + ELLIPSOID ELEV. IN FEET)