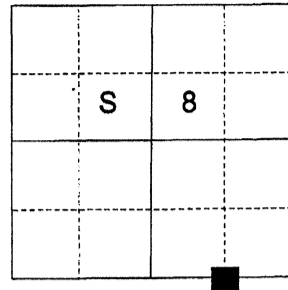


**CERTIFIED RECORD OF LAND CORNER MONUMENTATION**

**HISTORY OF ORIGINAL CORNER ESTABLISHED:**

Corner not previously established

T 1 S R 40 E J-08



**DESCRIPTION OF CORNER EVIDENCE FOUND:**

None

SEE SURVEY NUMBER 026-2022

**DESCRIPTION OF MONUMENT AND ACCESSORIES I ESTABLISHED TO MONUMENT THE ORIGINAL LOCATION OF THIS CORNER:**

At position by survey, I set a 5/8" x 30" iron pin, 26" in the ground, with 2 1/2" aluminum cap marked as shown and in a 3 ft. diam. collar of stone, from which:

**NEW BEARING OBJECTS:**

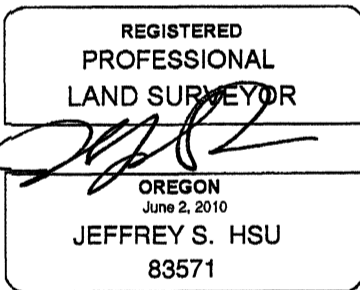
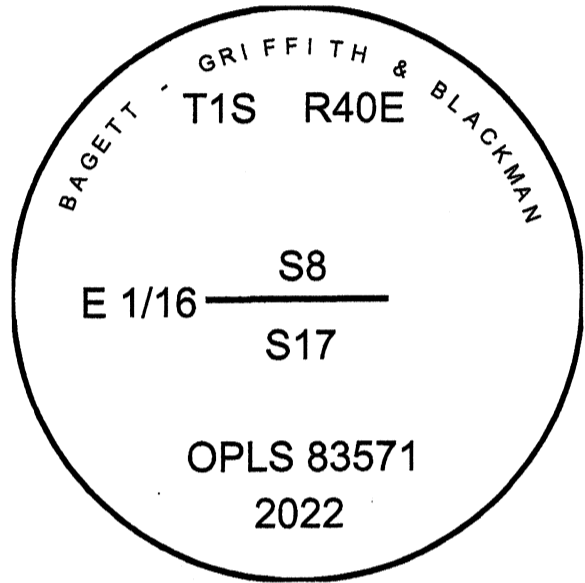
A 14" Ponderosa Pine bears North 66° East a dist. of 6.85 ft., marked E 1/16 S8 BT.  
A 5" Douglas Fir bears South 49° East a dist. of 5.20 ft., marked E 1/16 S17 BT.

Set steel fence post approx. 1 ft. South

Fence corner to North/East/West bearing fencelines bears approx. 10 ft. East and 2 ft. South

I hereby certify that the corner was monumented on August 24, 2022.

Witness: Dan S. Drum, Kyle A. Tucker



Renewal Date: June 30, 2023

I used a steel tape and magnetic compass in the establishment of the new accessories. I used 14° East declination, the distances are to a 60d spike driven into the right side of the root crown of the bearing trees. A brass washer marked OPLS 83571 is attached to the BT blaze of the new bearing trees.

