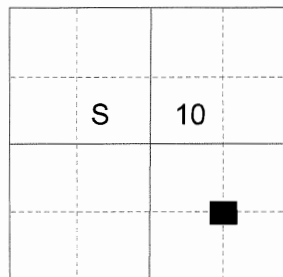


**CERTIFIED RECORD OF LAND CORNER MONUMENTATION**

**HISTORY OF ORIGINAL CORNER ESTABLISHED:**

Corner not previously established. James Hambleton provides a position for this corner in Survey Number 32-80, but does not monument it.

T 1 S R 40 E H-16



**DESCRIPTION OF CORNER EVIDENCE FOUND:**

None.

SEE SURVEY NUMBER 018-2017

**DESCRIPTION OF MONUMENT AND ACCESSORIES I ESTABLISHED**

**TO PERPETUATE THE ORIGINAL LOCATION OF THIS CORNER:**

At position determined by survey, I set a 5/8" x 30" iron pin, 25 inches in the ground, with 2 1/2" aluminum cap, marked as shown below, from which:

**NEW BEARING TREES:**

A 7" Douglas Fir bears North 42° West, a distance of 22.90 feet, marked SE 1/16 S10 BT.  
An 11" Douglas Fir bears North 6° West, a distance of 30.35 feet, marked SE 1/16 S10 BT.  
Area is being logged at the time of monumentation. No available trees in other quadrants.

Set a steel fencepost approx 0.5 ft. North of corner. I hereby certify that the corner was monumented May 29, 2017.

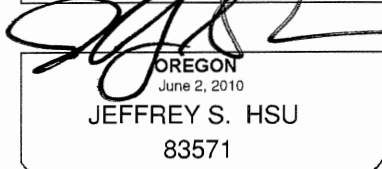
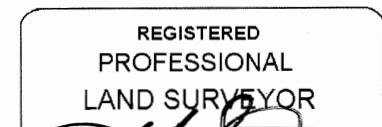
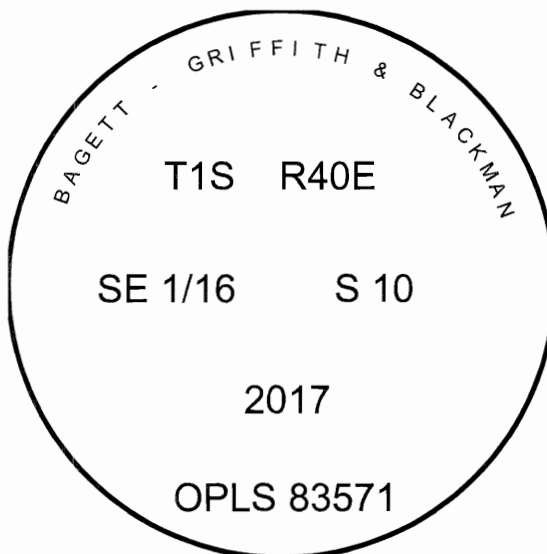
**UNION COUNTY SURVEYOR**

Date Received 5/31/17

Date Filed 5/31/17

Filed By [Signature]

File Number 008-2017R



Renewal Date: June 30, 2019

I used a steel tape and magnetic compass in the establishment of the bearing trees. Magnetic declination used was 13° East. Bearings are to a brass washer in the lower BT blaze marked OPLS 83751. Distances are to a spike in the side of the root crown.