

CERTIFIED RECORD OF LAND CORNER MONUMENTATION

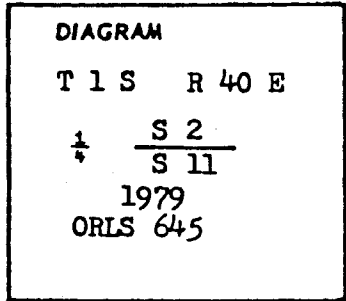
E-19

History of original corner establishment:

Corner established in 1882 by Henry Meldrum, Deputy Surveyor under Contract No. 450.

Surveyor General's records states:

Set a basalt stone, 18 x 12 x 6", 12" in the ground for $\frac{1}{4}$ sec. cor. mkd. $\frac{1}{4}$ on N face; and raised a mound of stone alongside. Pits impracticable.



Description of corner evidence found:

At assumed corner location I found no trace of original stone nor mound as corner falls on a very steep hillside.

Description of monument and accessories I established to perpetuate the original location of this corner

I located this $\frac{1}{4}$ cor by proportionate measurements and set a 2" galv. iron pipe with brass cap 12" above the surface of the ground in a large mound of stone 3 ft. dia. and 2 ft. high. Cap stamped as shown above.

Bearing trees:

A 4" P. pine bears N 10 E, 61.3 ft. (slope dist.) as ground very steep and scribed $\frac{1}{4}$ S BT.

A 10" P. pine bears S 02 E, 82.0 ft. (slope dist.) as ground very steep and scribed $\frac{1}{4}$ S BT.

REGISTERED PROFESSIONAL LAND SURVEYOR

James H. Hambleton

OREGON
JULY 10, 1964
JAMES H. HAMBLETON
645

Office of..... County of.....

State of....., I hereby certify that the within instrument was filed in this office

for record on the day of.....

..... by

(COUNTY OFFICIAL)

(DEPUTY)

UNION COUNTY SURVEYOR

Date Received _____

Date Filed _____

☆ GPO 796-333

By _____

File No. 140-84 R

CERTIFIED RECORD OF LAND CORNER MONUMENTATION

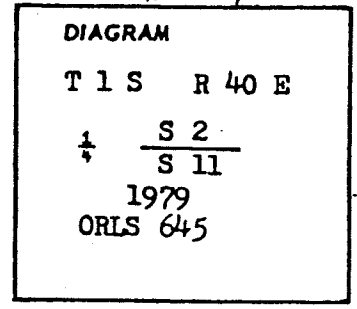
E-19

History of original corner establishment:

Corner established in 1882 by Henry Meldrum, Deputy Surveyor under Contract No. 450.

Surveyor General's records states:

Set a basalt stone, 18 x 12 x 6", 12" in the ground for $\frac{1}{4}$ sec. cor. mkd. $\frac{1}{4}$ on N face; and raised a mound of stone alongside. Pits impracticable.



Description of corner evidence found:

At assumed corner location I found no trace of original stone nor mound as corner falls on a very steep hillside.

Description of monument and accessories I established to perpetuate the original location of this corner

I located this $\frac{1}{4}$ cor by proportionate measurements and set a 2" galv. iron pipe with brass cap 12" above the surface of the ground in a large mound of stone 3 ft. dia. and 2 ft. high. Cap stamped as shown above.

Bearing trees: *N 10 15 E 68.8*
A 4" P. pine bears ~~N 10 E, 61.3~~ ft. (slope dist.) as ground very steep and scribed $\frac{1}{4}$ S BT.

S 03 E 75.4
A 10" P. pine bears ~~S 02 E, 82.0~~ ft. (slope dist.) as ground very steep and scribed $\frac{1}{4}$ S BT.

and bearings
Note: *Distance to bearing tree is amended*
5-20-80 James H. Hambleton
ORLS 645

REGISTERED
PROFESSIONAL
LAND SURVEYOR

James H. Hambleton

OREGON
JULY 10, 1964
JAMES H. HAMBLETON
645

Office of..... County of.....
State of....., I hereby certify that the within instrument was filed in this office
for record on the day of

(COUNTY OFFICIAL)

(DEPUTY)

UNION COUNTY
SURVEYOR

Date Received _____

Date Filed _____

By _____

File No. 141-84 R

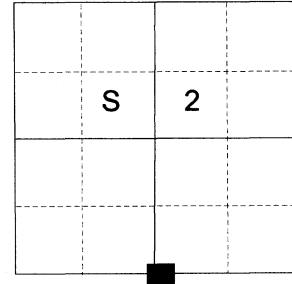
CERTIFIED RECORD OF LAND CORNER MONUMENTATION

HISTORY OF ORIGINAL CORNER ESTABLISHED:

Corner originally established by Henry Meldrum under GLO contract number 450 dated June 11, 1882. Surveyor General field notes state:
Set a basalt stone 18 x 12 x 6 ins., 12 ins. in ground for 1/4 sec. cor. marked 1/4 on N. face, raised mound of stone alongside, pits impracticable.

In 1980 James H. Hambleton found no trace of the original corner as it falls on a very steep hillside. Union County Monumentation Record 141-84R states: I located this 1/4 cor. by proportionate measurements and set a 2" galv. iron pipe with brass cap 12" above the surface of the ground in a large mound of stone 3 ft. dia. and 2 ft. high. Cap stamped as shown above. from which:
A 4" P. Pine bears N10°15'E, 68.8 ft. (slope dist.) as ground very steep and scribed 1/4 S BT
A 10" P. Pine bears S03E, 75.4 ft. (slope dist.) as ground very steep and scribed 1/4 S BT.

T 1 S R 40 E E-19



DESCRIPTION OF CORNER EVIDENCE FOUND:

Found a 2 1/2" galvanized iron pipe, 8" above ground, with 2 1/2" brass cap and in a 3' diam. mound of stone, from which:

A 20" Ponderosa Pine bears North 10° East a dist. of 62.35 ft., alive and vigorous with healed blaze.

A 22" Ponderosa Pine bears South 3° East a dist. of 73.50 ft., alive and vigorous with healed blaze.

Falls approx. 0.5 ft. South of fence to West/East bearing fence lines.

DESCRIPTION OF MONUMENT AND ACCESSORIES I ESTABLISHED TO PERPETUATE THE ORIGINAL LOCATION OF THIS CORNER:

From the iron pipe monument:

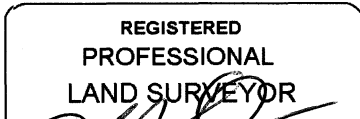
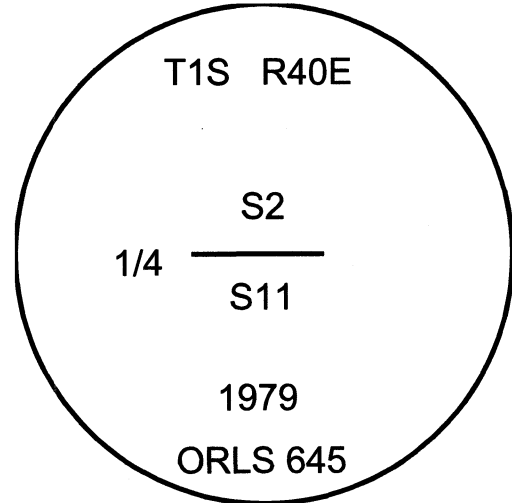
NEW BEARING OBJECTS:

A 10" Ponderosa Pine bears South 47° West, a dist. of 33.75 ft., marked 1/4 S11 BT.

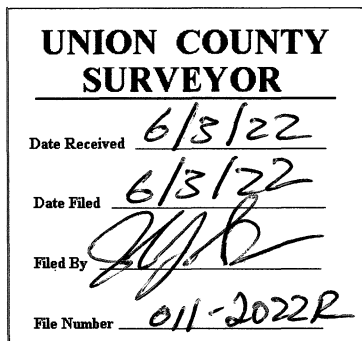
A 10" Ponderosa Pine bears North 89° West, a dist. of 29.70 ft., marked 1/4 S2 BT.

I hereby certify that the corner was perpetuated on May 13, 2022.

Witness: Kyle A. Tucker



Renewal Date: June 30, 2023



I used a steel tape and magnetic compass in the establishment of the new accessories. I used 14° East declination, the distances are to a 60d spike driven into the right side of the root crown of the bearing trees. A brass washer marked OPLS 83571 is attached to the BT blaze of the new bearing trees.

HORIZONTAL CONTROL DATA

UNION COUNTY, OREGON

OREGON STATE PLANE, NORTH ZONE (3601)

STA NAME: 20220017

1/4 SECTION CORNER COMMON TO SECTIONS 2 AND 11

TWP. 1 S RGE. 40 E.

GEODETIC COORD: NAD 83(91)

DATE TIED: June 10, 2022

LAT: 45 ° 30 ' 0.29922 " N

SURVEYOR: JEFFREY S. HSU
OPLS 83571

LONG: 117 ° 46 ' 40.99667 " W

FIRM: BAGETT, GRIFFITH, & BLACKMAN
2006 ADAMS AVENUE
LAGRANDE, OR 97850
(541) 963-6092

SP. COOR: NAD 83(91)

N: 680172.808 INT FT.

E: 8899877.136 INT FT.

TYPE: GPS

THETA: 1 ° 55 ' 49.3 "

ORDER: SECOND CLASS: 1

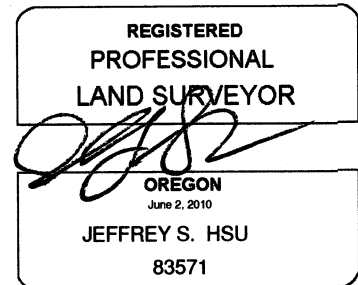
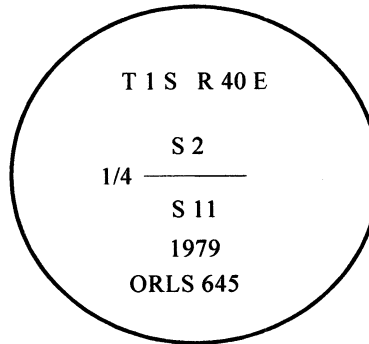
SCALE FACTOR: 0.999911281

ELEV: 4326.41 US FT.

ELEV: DATUM: NGVD 29

COMMENTS:

2 ½" iron pipe with brass cap marked as shown, set in mound of stone



Renewal Date: June 30, 2023

1 METER = 3.2808333333... US FEET = 39.37 INCHES

1 METER = 3.280839895 INT'L FEET OR 1 INCH = 2.54 CM

TO CALCULATE ELEVATION FACTOR (IN THE NORTH AMERICAN CONTINENT)

DIVIDE 20,906,000 BY (20,906,000 + ELLIPSOID ELEV. IN FEET)

GEOID MODEL : 2012B